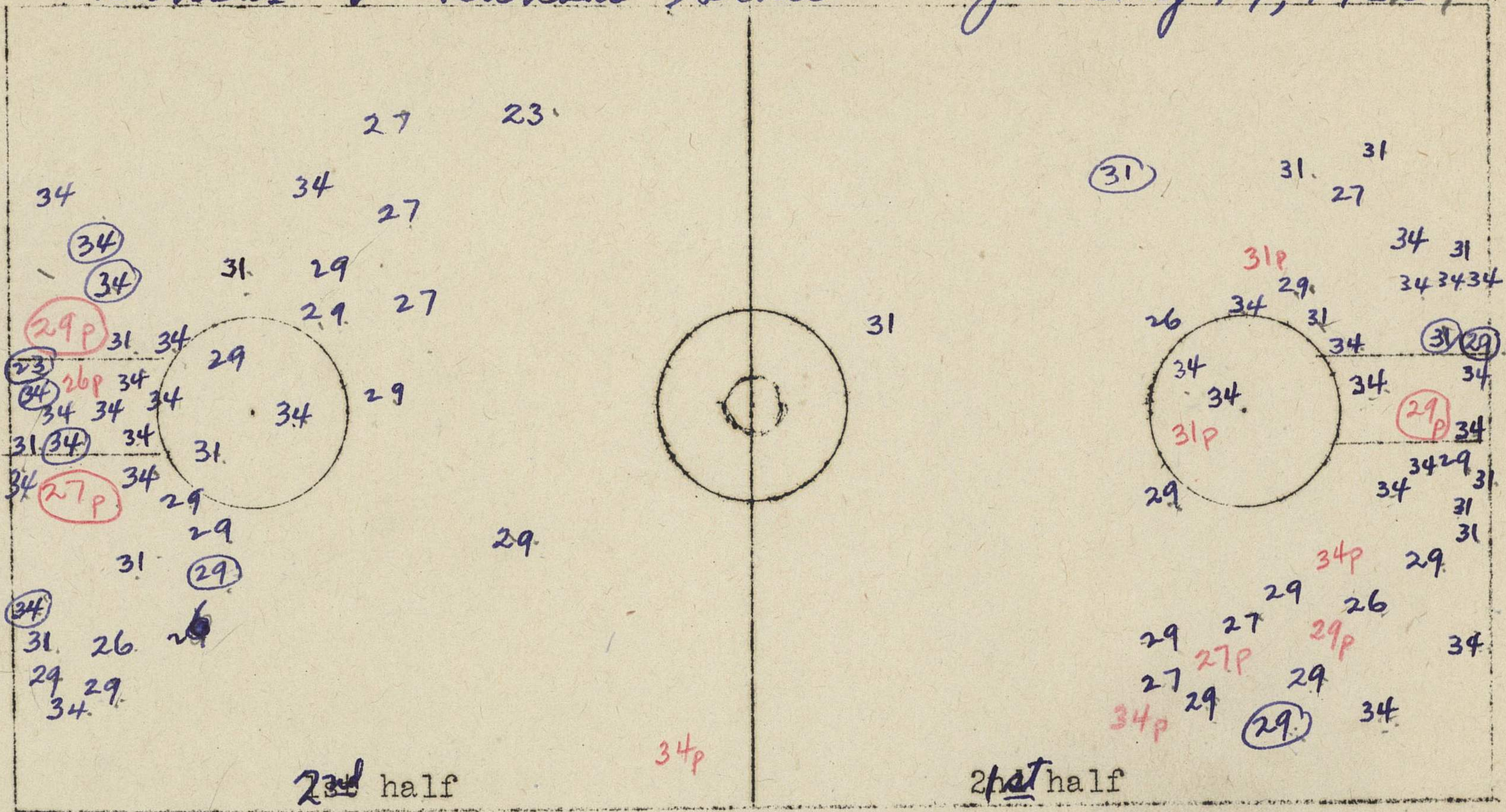


Kansas v Kansas State January 19, 1936



1. Number of jump balls in center circle. 1st Half _____ Second _____
2. Number of jump balls in free-throw circles. 1st Half _____ 2nd _____
3. Number of center jumps _____
4. Number of fouls resulting in multiple throw 6
5. Number of times ball out of bounds at end of court 8
6. Would it have gone out if goals were set in 4 ft. 5
7. Would it have gone out if goals were set in 6 ft. 3
8. Number of times out of bounds as result of personal foul. 1st 5 2nd 1
9. Number of violations of 3 second rule. 1
10. Number of times forced back over division line _____
11. Number of times failed to bring ball over division line. _____

Team	<u>Kansas State</u>
Lineup	No.
<u>Klimmek</u>	<u>29</u>
<u>Kramer</u>	<u>23</u>
<u>Wesche</u>	<u>31</u>
<u>Groves</u>	<u>34</u>
<u>Cleveland</u>	<u>27</u>
<u>Killogg</u>	<u>30</u>
<u>Schierling</u>	<u>26</u>

	1st half	2nd half
Number of field goals attempted.	<u>40</u>	<u>40</u>
Successful attempts.	<u>4</u>	<u>7</u>
Number of free throws attempted.	<u>4</u>	<u>6</u>
Successful attempts.	<u>2</u>	<u>4</u>

80 } 13%
11 }

Mark on court chart location where player attempts field goal.
 Mark number of player and, if attempt is successful, draw a circle around the number. 25
 Mark location of all personal fouls by p and by the number of man making foul-22p.
 If resulting in multiple throw, put circle around it-22p.