

University of Kansas Basketball, Season of 1936

	-----Conference Games-----										-----Non-Conference Games-----						-----Olympic Games-----					Season's Totals					
	K S C	I S	Mo	Nebr	I S	Okla	K S C	Nebr	Okla	Mo	Total	Washbn	Ottawa	Baker	K S C	S. Cal	Calif	Calif	Washbn	Total	Washbn		Ok A&M	Utah S	Utah S	Utah S	Total
<u>Goals</u>																											
Allen	2	4	1	3	2	3	3	3	1	3	25	1	3	0	3	2	0	1	1	11	5	3	1	0	0	9	45
Cox	-	0	-	0	0	-	0	-	-	0	0	1	1	1	0	0	-	0	1	4	-	-	-	-	0	0	4
Ebling	4	2	3	8	5	6	5	6	6	6	51	3	4	3	1	7	5	3	7	33	2	2	4	5	6	19	103
Holiday	-	1	0	1	1	-	1	0	-	0	4	0	2	0	0	1	-	2	2	7	-	-	0	0	0	0	11
Holmer	-	0	-	1	0	-	0	-	-	0	1	-	0	-	-	-	-	0	0	0	-	-	-	-	-	-	1
Hoverstock	-	-	-	-	-	-	-	-	-	-	-	0	0	-	-	-	-	-	0	0	-	-	-	-	-	-	0
Hormuth	-	-	-	-	-	-	-	-	-	-	-	0	0	-	-	-	-	-	0	0	-	-	-	-	-	-	0
Kappelman	0	4	0	2	2	0	2	5	2	2	19	2	1	3	2	0	2	1	1	12	2	1	1	-	-	4	35
Lutton	-	0	-	0	-	-	-	-	-	-	0	-	0	-	0	1	-	-	-	1	-	-	-	-	-	-	1
Noble	3	2	3	0	2	2	5	2	4	3	26	4	5	1	2	5	5	1	5	28	1	3	4	2	0	10	64
Piper	-	-	-	-	-	-	-	-	-	-	-	0	1	-	-	-	-	-	-	1	-	-	-	-	-	-	1
Pralle	2	2	2	3	4	5	4	3	5	5	35	0	3	3	6	2	1	2	2	19	2	1	1	4	2	10	64
Rogers	-	-	-	0	0	-	0	-	-	1	1	1	2	0	0	0	-	-	0	3	-	0	0	0	0	0	4
Schmidt	-	-	-	-	-	-	-	-	-	-	-	0	0	-	0	-	-	-	0	0	-	-	-	-	-	-	0
Shaffer	-	-	0	0	0	0	0	0	0	0	0	0	0	1	0	0	-	-	1	2	-	-	-	0	2	2	4
Stewart	-	0	-	-	-	-	-	-	-	-	-	0	1	-	-	-	-	-	-	1	-	-	-	-	-	-	1
Totals	11	15	9	18	16	16	20	19	18	20	162	12	23	12	14	18	13	10	20	122	12	10	11	11	10	54	338

<u>Free Throws</u>																											
Allen	2	1	0	2	1	1	2	1	4	4	18	4	2	3	0	0	1	2	3	15	1	1	3	2	3	10	43
Cox	-	1	-	0	0	-	0	-	-	1	2	0	0	0	0	0	-	0	0	0	-	-	-	-	0	0	2
Ebling	3	1	4	3	4	7	3	4	8	2	39	1	2	3	1	1	1	1	4	14	4	8	9	5	3	29	82
Holiday	-	0	0	2	0	-	2	0	-	0	4	0	0	1	0	0	-	0	0	1	-	-	2	1	1	4	9
Holmer	-	0	-	0	0	-	0	-	-	0	0	-	0	-	-	-	-	-	0	0	-	-	-	-	-	-	0
Hoverstock	-	-	-	-	-	-	-	-	-	-	-	0	0	-	-	-	-	-	0	0	-	-	-	-	-	-	0
Hormuth	-	-	-	-	-	-	-	-	-	-	-	0	0	-	-	-	-	-	0	0	-	-	-	-	-	-	0
Kappelman	1	2	3	1	2	1	2	0	0	1	13	2	2	0	2	0	0	0	1	7	1	0	0	-	-	1	21
Lutton	-	1	-	0	-	-	-	-	-	-	1	-	0	-	0	0	-	-	-	0	-	-	-	-	-	-	1
Noble	0	2	4	1	0	1	0	0	2	2	12	3	1	2	2	0	3	3	1	15	1	4	0	1	0	6	33
Piper	-	-	-	-	-	-	-	-	-	-	-	0	0	-	-	-	-	-	0	0	-	-	-	-	-	-	0
Pralle	0	0	0	0	2	1	2	0	1	1	17	0	0	1	1	1	1	1	2	7	2	0	3	5	1	11	25
Rogers	-	-	-	0	0	-	0	-	-	0	0	1	0	0	0	0	-	-	0	1	-	1	0	1	3	5	6
Schmidt	-	-	-	-	-	-	-	-	-	-	-	0	0	-	0	-	-	-	0	0	-	-	-	-	-	-	0
Shaffer	-	-	0	0	1	0	1	-	0	0	2	0	0	0	0	0	-	-	0	0	-	-	-	0	0	0	2
Stewart	-	0	-	-	-	-	-	-	-	-	0	0	0	-	-	-	-	-	0	0	-	-	-	-	-	-	0
Totals	6	8	11	9	10	11	12	5	15	11	98	11	7	10	6	2	6	7	11	60	9	14	17	15	11	66	224

-----Conference Games-----

---Non-Conference Games---

---Olympic Games---

Missed Free Throws	Conference Games			Non-Conference Games							Olympic Games						Totals for Season '36										
	K S C	Iowa S	Mo	Neb	Iowa S	Okla	K S C	Neb	Okla	Mo	Total	Washbn	Ottawa	Baker	K S C	S. Cal		Calif	Calif	Washbn	Total	Washbn	Ok. A&M	Utah St	"	"	Total
Allen	1	0	1	1	1	0	2	0	2	1	9	1	0	0	0	1	0	0	2	4	1	0	1	0	3	5	18
Cox	1	0	1	0	0	1	0	1	1	1	11	0	0	0	1	0	1	0	1	2	1	1	1	1	0	3	36
Ebling	2	1	1	1	0	2	3	2	2	1	15	3	1	1	0	0	2	1	0	8	1	2	1	6	1	3	36
Holliday	1	0	0	0	0	1	0	1	1	0	1	0	0	1	0	0	1	0	0	1	1	1	1	0	0	0	2
Holmer	1	0	1	0	0	1	0	1	1	0	0	0	0	1	1	1	1	0	0	0	0	0	0	1	1	0	7
Kappelman	0	2	0	1	1	0	0	0	0	1	5	0	0	0	2	0	0	0	2	2	0	0	0	1	1	0	7
Noble	0	0	2	1	0	0	0	0	1	0	4	3	0	0	1	1	1	2	8	2	2	1	1	0	0	3	15
Lutton	1	0	1	0	1	1	1	1	1	1	0	0	0	1	0	0	0	0	0	0	0	1	1	1	1	1	0
Piper	1	1	1	1	1	1	1	1	1	1	1	0	0	1	1	1	1	1	1	0	0	1	1	1	1	1	0
Pralle	2	1	2	0	0	1	2	0	0	1	9	0	0	2	2	2	0	0	0	7	1	1	2	0	0	3	19
Rogers	1	1	1	0	1	1	0	1	1	0	1	1	0	0	0	0	1	0	0	1	1	1	0	1	0	2	4
Schmidt	1	1	1	1	1	1	1	1	1	1	1	0	0	1	1	1	1	0	0	0	1	1	1	1	1	1	0
Shaffer	1	1	0	0	0	0	0	1	0	0	0	1	0	0	1	1	1	0	0	1	1	1	1	0	0	0	1
Stewart	1	0	1	1	1	1	1	1	1	1	0	0	0	1	1	1	1	1	1	0	1	1	1	1	1	1	0
Totals	5	4	6	4	3	3	7	5	5	5	45	9	1	4	5	4	5	3	3	34	6	2	10	2	6	26	105

Personal Fouls

Allen	2	3	3	4	1	1	2	4	3	2	25	3	1	4	1	1	1	3	2	16	2	1	4	1	2	10	51
Cox	1	0	1	0	1	1	0	1	1	0	1	1	0	0	3	0	0	0	0	4	0	1	0	2	0	0	5
Ebling	0	2	0	1	2	0	1	2	2	2	12	1	0	1	1	1	0	0	0	4	0	1	0	2	0	3	19
Holliday	1	1	0	1	0	1	0	0	1	1	3	0	1	0	2	1	1	2	1	7	1	1	0	0	0	0	10
Holmer	1	2	1	0	0	1	0	1	1	0	2	0	0	1	1	1	1	1	1	0	0	1	1	1	1	1	2
Hormuth	1	1	1	1	1	1	1	1	1	1	1	0	0	1	1	1	1	1	0	0	0	1	1	1	1	1	0
Hoverstock	1	1	1	1	1	1	1	1	1	1	1	0	0	1	1	1	1	1	0	0	0	1	1	1	1	1	0
Kappelman	0	2	0	1	2	4	0	2	0	1	12	0	0	0	2	4	2	1	0	9	3	1	1	1	1	5	26
Noble	1	1	0	1	2	1	1	2	4	2	15	2	3	4	2	1	2	4	3	21	0	1	0	1	2	4	40
Lutton	1	0	1	0	1	1	1	1	1	1	0	0	0	0	0	0	0	0	0	0	0	0	0	0	0	0	0
Piper	1	1	2	3	0	2	1	1	1	3	15	2	1	1	3	1	1	0	1	10	2	0	3	1	3	9	34
Pralle	1	1	1	0	1	1	0	1	1	0	1	0	2	0	0	0	1	1	3	3	1	1	3	4	1	9	13
Rogers	1	1	1	0	1	1	0	1	1	0	1	0	2	0	0	0	1	1	1	3	1	1	3	4	1	9	13
Schmidt	1	1	1	1	1	1	1	1	1	1	1	1	0	1	1	1	1	0	2	2	1	1	1	1	1	1	2
Shaffer	1	1	0	0	3	1	0	1	0	0	4	2	0	0	0	0	1	1	3	3	1	1	0	1	1	1	8
Stewart	1	1	1	1	1	1	1	1	1	1	1	0	0	1	1	1	1	1	0	0	1	1	1	1	1	1	1
Totals	4	13	5	11	12	9	5	11	10	11	91	12	8	10	15	9	6	10	9	79	7	5	11	9	9	41	211

Michigan State College

Sport News Service

Release on receipt

It wasn't Christmas anyway

East Lansing, Mich., Nov. 00 --- The city of Whiting, Ind., for two years in succession has provided the captain of Michigan State's freshman football team. Members of the Spartans' freshman squad this year named Michael Kinek for the honor. Last year George Kovacich led the yearlings. Captains are not named until the conclusion of the season. Kinek, a brilliant student as well as a fine prospect, hopes to do as well as Kovacich did in his sophomore year. Kovacich won his letter as a reserve fullback.

-4-

East Lansing, Mich., Nov. 00 --- Michigan State's first basketball game, scheduled for Dec. 12 with Albion College, will be played off the campus. It is to be staged at the Boys Vocational school fieldhouse in Lansing. Originally scheduled for Demonstration hall, home of Spartan quintets, it was necessary to move the game because farm machinery is to be displayed in the hall on that date.

-4-

East Lansing, Mich., Nov. 00 --- Winning football teams at Michigan State College over a three year period have been accompanied by charges, intimation and inferences that scholastic standards at the institution were lower than those of universities or other colleges in the midwestern area. Persistent inferences that the Spartans' success was due to the low entrance requirements, Dean R. C. Huston of the college recently struck out vigorously in defense. Some of the leading statements Dean Huston, who is chairman of the eligibility committee and also of the athletic council, made in an interview that was requested by sports writers were as follows:

That Michigan State's entrance requirements and scholastic standards parallel those of the University of Michigan, for instance, and are higher than several of the schools in the Big 10.

(More)

across to the BLS 10

(Note)

those of the University of Michigan for instance and the other part of the

that Michigan State's entrance requirements and academic standards

follows:

academic council made in its jurisdiction that was required by other states were in
ments from Michigan are its equivalent of the existing committee and also of the
of the college recently struck out Michigan in Michigan. Some of the leading state-
the standards, however was due to the low entrance requirements from E. C. Hinton
requirements of other colleges in the midwestern area. Legislative interferences that
interferences that academic standards of the institution were lower than those of
college over a three year period were accompanied by various information and

East Lansing, Mich. Nov. 10 1911 Michigan State's first yearbook

1911

received from Michigan is to be displayed in the hall on that date

for demonstration hall. Some of the other features it was necessary to make the same
be added at the boys' department across the entrance in Lansing. Originally scheduled
scheduled for Dec. 15 with Michigan College will be held on the same. It is to

East Lansing, Mich. Nov. 10 1911 Michigan State's first yearbook

1911

George Kowalski

Dr. Allen

to do a... Kowalski was the sophomore year. Kowalski was the letter as a
situation of the season. Kowalski a brilliant student as well as a fine basketball player
last year George Kowalski led the yearlings. Kowalski was not named until the con-
members of the yearling, treasurer and secretary were named. Kowalski led for the honor.
in association was provided the secretary of Michigan State's treasurer Kowalski term.

East Lansing, Mich. Nov. 10 1911 The city of Michigan, Ind. for two years

George Kowalski

Reference on receipt

Michigan State College

Official Box K andas Kansas State Jn. 19

	G	FT	MFT	PF		G	FT	MFT	PF
Holliday, f	1	1		1	Kansas State				
Roger s, f	4	3	1	3	Klimek, f	3	2		3
Wellhausen, c	1			1	Wesche, f	1			2
Pralle, g	5	3	1	1	Groves, vo	6	2	2	3
Noble, g	2	3	0	1	Cleveland, g		2	2	
Schmidt, f		1			Schierlmann, g				1
Durand, g					Kramer,, f	1			
Kappelma, f					Kellogg, g				
Weidner, c						11	6	4	9
Lutton, c									
Corliss, f	1								
	14	11	2	7					

Offid als-- E C Quigley, st. Maries and Gene Johnson, McPle rson

Individual Scoring, Kansas, Including Dec. 28.

Player	Games	Gls.	FT	FTM	^{FT} Pct	TP.	PF
Noble	5	10	6	1	.857	26	7
Pralle	5	11	9	9	.500	31	8
Holliday	5	7	6	5	.545	20	9
Cox	3	0	0	1	.000	0	1
Rogers,	4	6	3	0	1.000	15	3
Golay	5	11	8	3	.728	30	8
Corlis	5	5	3	4	.430	13	3
Lutton	5	0	1	2	.333	1	2
Schmidt	2	2	1	0	1.000	5	0
Weidner	3	0	0	0	.000	0	2
Bosilevac	2	0	0	0	.000	0	0
Durand	3	5	6	0	1.000	15	1
Fuggitt	1	0	0	0	.000	0	0
Hoverstock	1	0	0	1	.000	0	1
Kappelman,	1	0	0	0	.000	0	0
Wellhausen	3	3	0	1	.000	6	0
Totals		60	43	27	.614	163	45

*--Need a column for "Scoring balls intercepted."

Team average

1st ~~score~~

SW

Player	G	FT	MFT	PZ
Kansas	9			
Galay f	1	0	0	2
Carls f	0	0	3	1
Wellsman c	1	0	0	0
Foble g	2	2	0	1
Boyle g	2	1	1	1
Holiday f	2	2	0	4
Durand f	3	4	0	0
Coy c	0	0	0	0
Felling g	0	0	1	0
Needles g	0	0	0	1
Schmidt f	0	0	0	0
Rogers	4	0	0	1
	15	9	5	11

Lucker f	2	1	0	2
Hunsaw f	0	0	0	0
Trangott c	0	2	1	4
W Porter g	1	0	0	3
Bratch g	1	0	1	1
MacDonald f	3	0	1	1
C Porter g	1	0	1	0
Lurine	0	1	1	0
McTrucker f	2	1	0	0
Farrell f	1	0	1	0
Gillespie g	0	0	0	1
Mally f	0	0	0	0
		5	8	12

From the K. U. News Bureau, Lawrence, Kans., W. A. Dill, Director

Official Score--Kansas vs. Washburn, Dec. 3, 1936.

<u>Kansas</u>	Goals	Free Thr.	Missed	Fr	Th	T Pt	Per.	Fls.	Minutes
Noble, f	1	0	0			2	4		35.
Cox, f	0	0	1			0	0		14.
Holliday, c	3	2	2			8	1		39.5
Rogers, g	1	1	0			3	0		19.0
Pralle, g	2	1	1			5	2		39.0
Golay, f	3	1	1			7	1		26.5
Corliss, g	2	1	0			5	0		26.5
Lutton, g	0	0	0			0	0		.5
Totals	12	6	5			30	8		200.0

<u>Washburn</u>	Goals	Free Thr.	Missed	Fr	Th	T Pt	Per.	Fls.	Minutes
Schulties, f	1	2	0			4	2		39.5
Pollner, f	2	1	0			5	3		39.5
Collard, c	3	3	1			9	3		39.5
Gilbert, g	3	0	4			6	2		40.0
Roakam, g	0	2	0			2	0		35.0
Mills, f	0	0	0			0	0		.5
Dittimore, f	0	0	0			0	0		.5
Brown, c	0	0	0			0	0		.5
Schlitter, 0	0	0	0			0	1		4 5.0
Totals	9	6	5			26	11		200.0

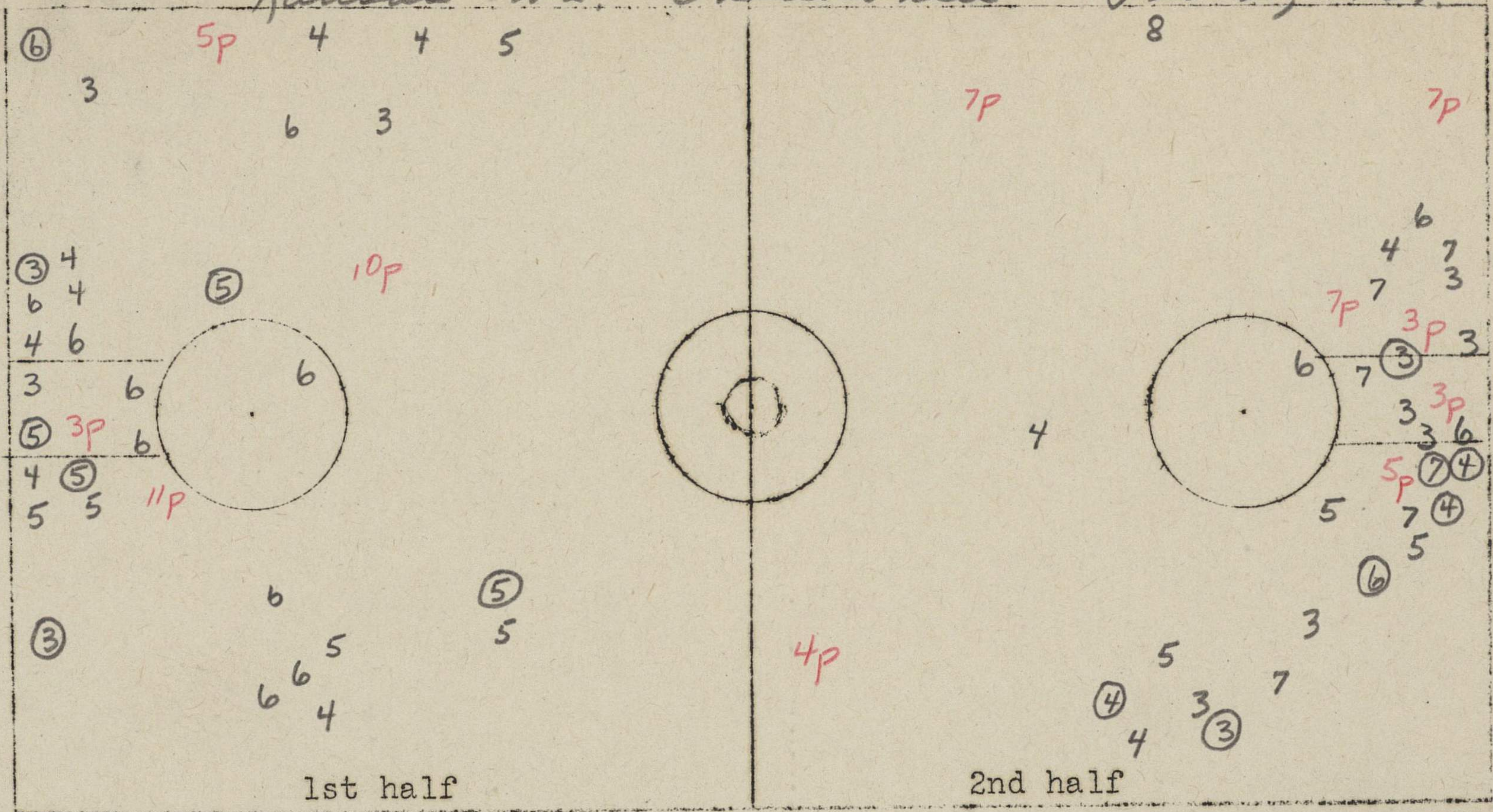
Official Score---Wansas- Wasburn, Dec. 3, 1936

1936

Kansas	Goals	Free Thr	Missed Fr Th	Per.Fls
Noble, f	1			4
Cox, f			1	
Holliday, e	3	2	2	1
Rogers, g	1	1		
P ralle g	2	1	1	2
Golafy f	3	1	1	1
Corliss, g	2	1		
Lutton, g				
	12	6	5	8

Wasburn	Goals	Fr.Thrs	Msd.Fr.Th	Per.Fls
Schulties, f	2 ¹	2		2
P ollner, f	2	1		3
Collard, e	3	3	1	3
Gilbert, g	3		4	2
Roakan, g		2		
Mills, f				
Dittimore, f				
Brown, e				
Schlitter ,				1
	9	6	5	11

Kansas vs. Oklahoma Feb 20, 1937



1. Number of jump balls in center circle. 1st Half _____ Second _____ .
2. Number of jump balls in free-throw circles. 1st Half _____ 2nd _____ .
3. Number of center jumps _____ .
4. Number of fouls resulting in multiple throw _____ .
5. Number of times ball out of bounds at end of court _____ .
6. Would it have gone out if goals were set in 4 ft. _____ .
7. Would it have gone out if goals were set in 6 ft. _____ .
8. Number of times out of bounds as result of personal foul. 1st _____ 2nd _____ .
9. Number of violations of 3 second rule. _____ .
10. Number of times forced back over division line _____ .
11. Number of times failed to bring ball over division line. _____ .

Team	Kansas
Lineup	No.
Holliday	7
Durand	11
Rogers	4
Gilley	8
Wellhouse	3
Corlis	9
Pralle	5
Kappelmah	12
Noble	6
Weidner	13

	1st half	2nd half
Number of field goals attempted.	31	28-59
Successful attempts.	7	7-14
Number of free throws attempted.	7	13-20
Successful attempts.	5	6-11

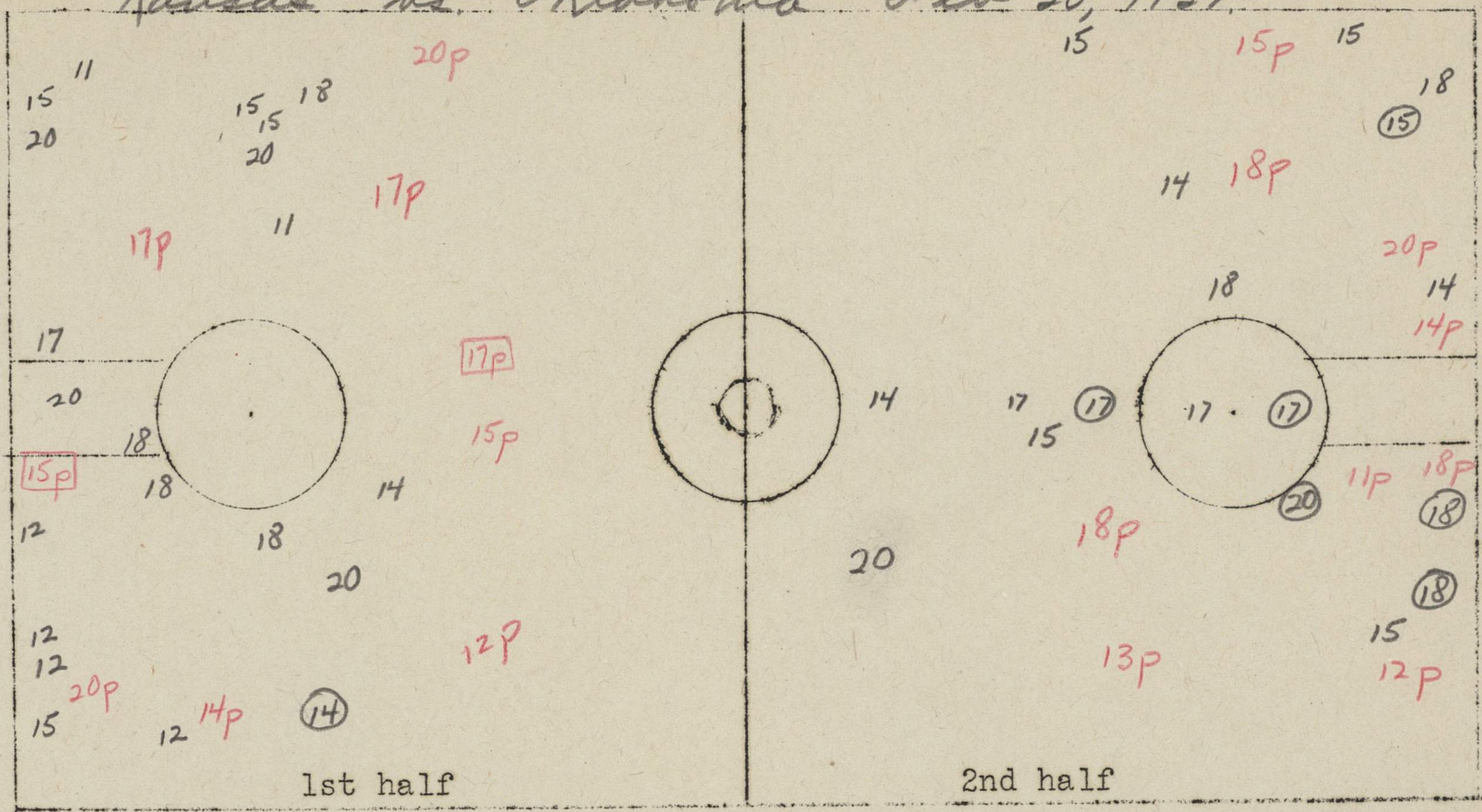
Mark on court chart location where player attempts field goal.

Mark number of player and, if attempt is successful, draw a circle around the number. 25

Mark location of all personal fouls by p and by the number of man making foul-22p. If resulting in multiple throw, put circle around it-22p.

Schmidt 29

Kansas vs Oklahoma Feb 20, 1937



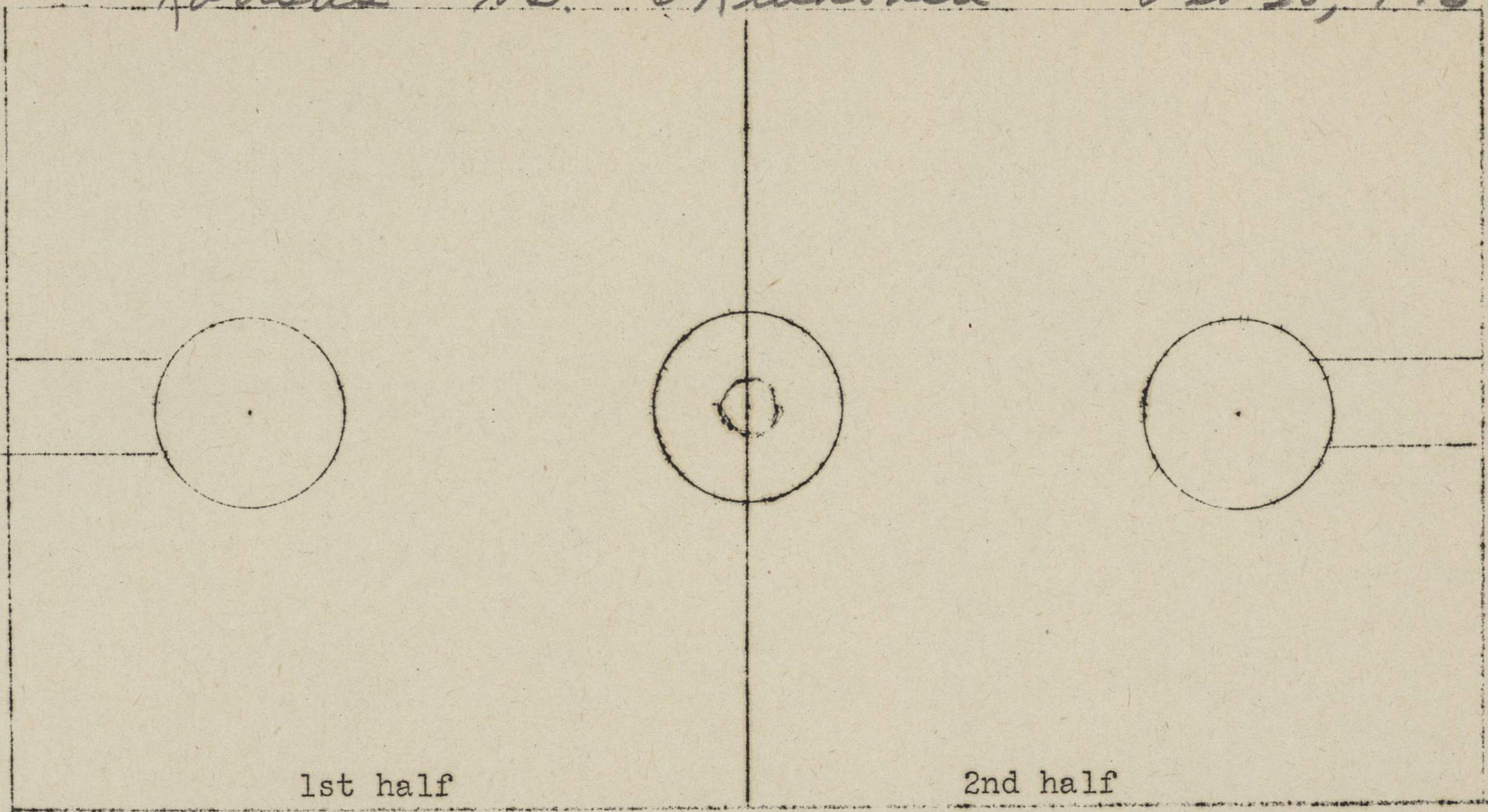
1. Number of jump balls in center circle. 1st Half _____ Second _____.
2. Number of jump balls in free-throw circles. 1st Half _____ 2nd _____.
3. Number of center jumps _____.
4. Number of fouls resulting in multiple throw _____.
5. Number of times ball out of bounds at end of court _____.
6. Would it have gone out if goals were set in 4 ft. _____.
7. Would it have gone out if goals were set in 6 ft. _____.
8. Number of times out of bounds as result of personal foul. 1st _____ 2nd _____.
9. Number of violations of 3 second rule. _____.
10. Number of times forced back over division line _____.
11. Number of times failed to bring ball over division line. _____.

Team <u>Oklahoma</u>	
Lineup	No.
<u>Needy</u>	<u>11</u>
<u>Otte</u>	<u>14</u>
<u>Connelly</u>	<u>18</u>
<u>Smith</u>	<u>13</u>
<u>Gunning</u>	<u>17</u>
<u>Nelson</u>	<u>15</u>
<u>Martin</u>	<u>20</u>
<u>Greyson</u>	<u>16</u>
<u>Reimy</u>	<u>12</u>

	1st half	2nd half
Number of field goals attempted.	<u>21</u>	<u>18 - 39</u>
Successful attempts.	<u>1</u>	<u>6 - 7</u>
Number of free throws attempted.	<u>5</u>	<u>6</u>
Successful attempts.	<u>3</u>	<u>2</u>

Mark on court chart location where player attempts field goal.
 Mark number of player and, if attempt is successful, draw a circle around the number. 25
 Mark location of all personal fouls by p and by the number of man making foul-22p.
 If resulting in multiple throw, put circle around it-22p.

Kansas vs. Oklahoma Feb 20, 1937.



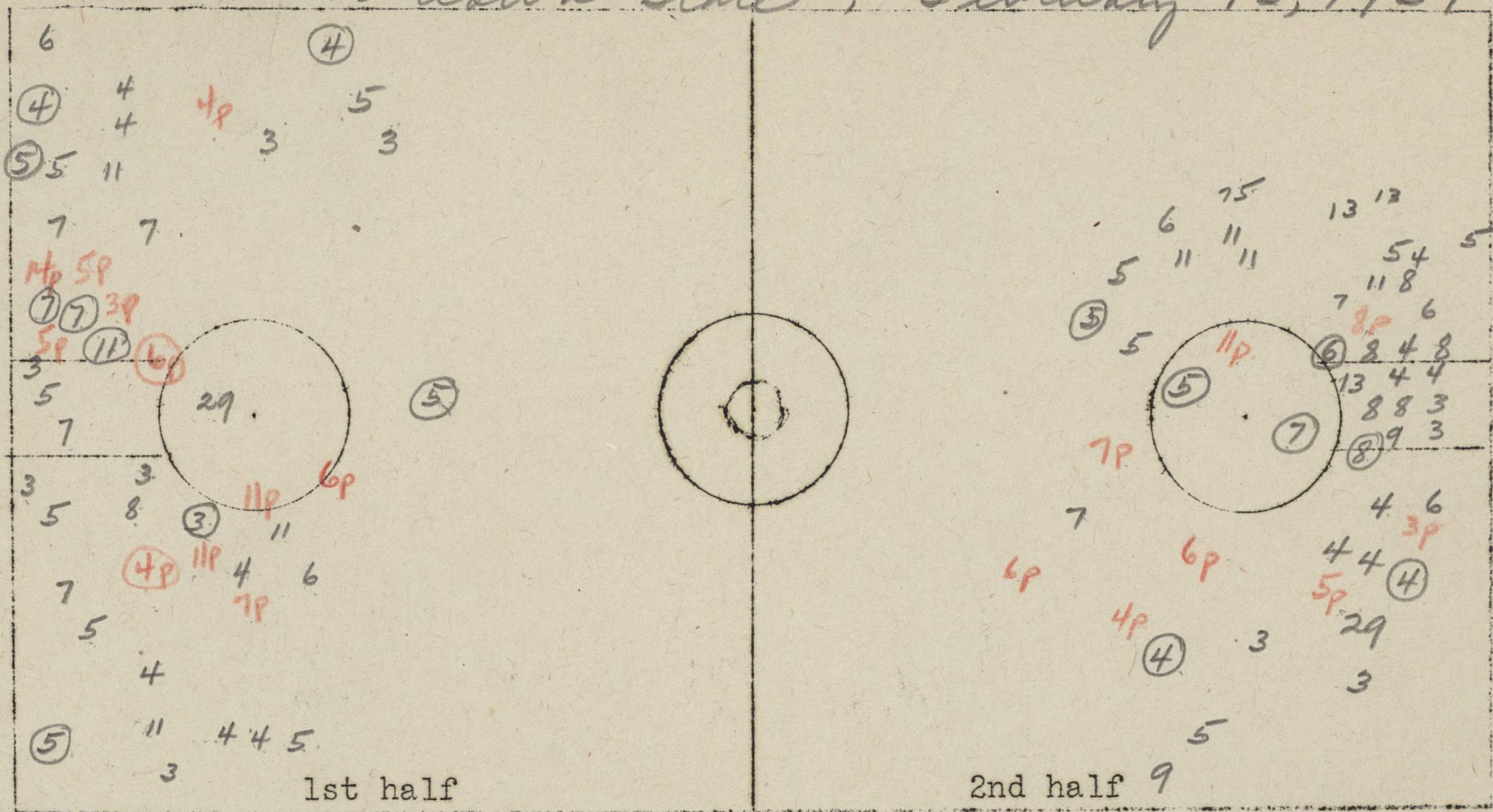
1. Number of jump balls in center circle. 1st Half _____ Second _____ .
2. Number of jump balls in free-throw circles. 1st Half _____ 2nd _____ .
3. Number of center jumps _____ .
4. Number of fouls resulting in multiple throw _____ .
5. Number of times ball out of bounds at end of court 23 .
6. Would it have gone out if goals were set in 4 ft. 17 .
7. Would it have gone out if goals were set in 6 ft. 12 .
8. Number of times out of bounds as result of personal foul. 1st 7 2nd 7 .
9. Number of violations of 3 second rule. 1 .
10. Number of times forced back over division line 1 .
11. Number of times failed to bring ball over division line. _____ .

Team	No.
Lineup	

	1st half	2nd half
Number of field goals attempted.		
Successful attempts.		
Number of free throws attempted.		
Successful attempts.		

Mark on court chart location where player attempts field goal.
 Mark number of player and, if attempt is successful, draw a circle around the number. 25
 Mark location of all personal fouls by p and by the number of man making foul-22p.
 If resulting in multiple throw, put circle around it-22p.

Kansas Vs Iowa State, February 13, 1937



1. Number of jump balls in center circle. 1st Half _____ Second _____ .
2. Number of jump balls in free-throw circles. 1st Half _____ 2nd _____ .
3. Number of center jumps _____ .
4. Number of fouls resulting in multiple throw _____ .
5. Number of times ball out of bounds at end of court _____ .
6. Would it have gone out if goals were set in 4 ft. _____ .
7. Would it have gone out if goals were set in 6 ft. _____ .
8. Number of times out of bounds as result of personal foul. 1st _____ 2nd _____ .
9. Number of violations of 3 second rule. _____ .
10. Number of times forced back over division line _____ .
11. Number of times failed to bring ball over division line. _____ .

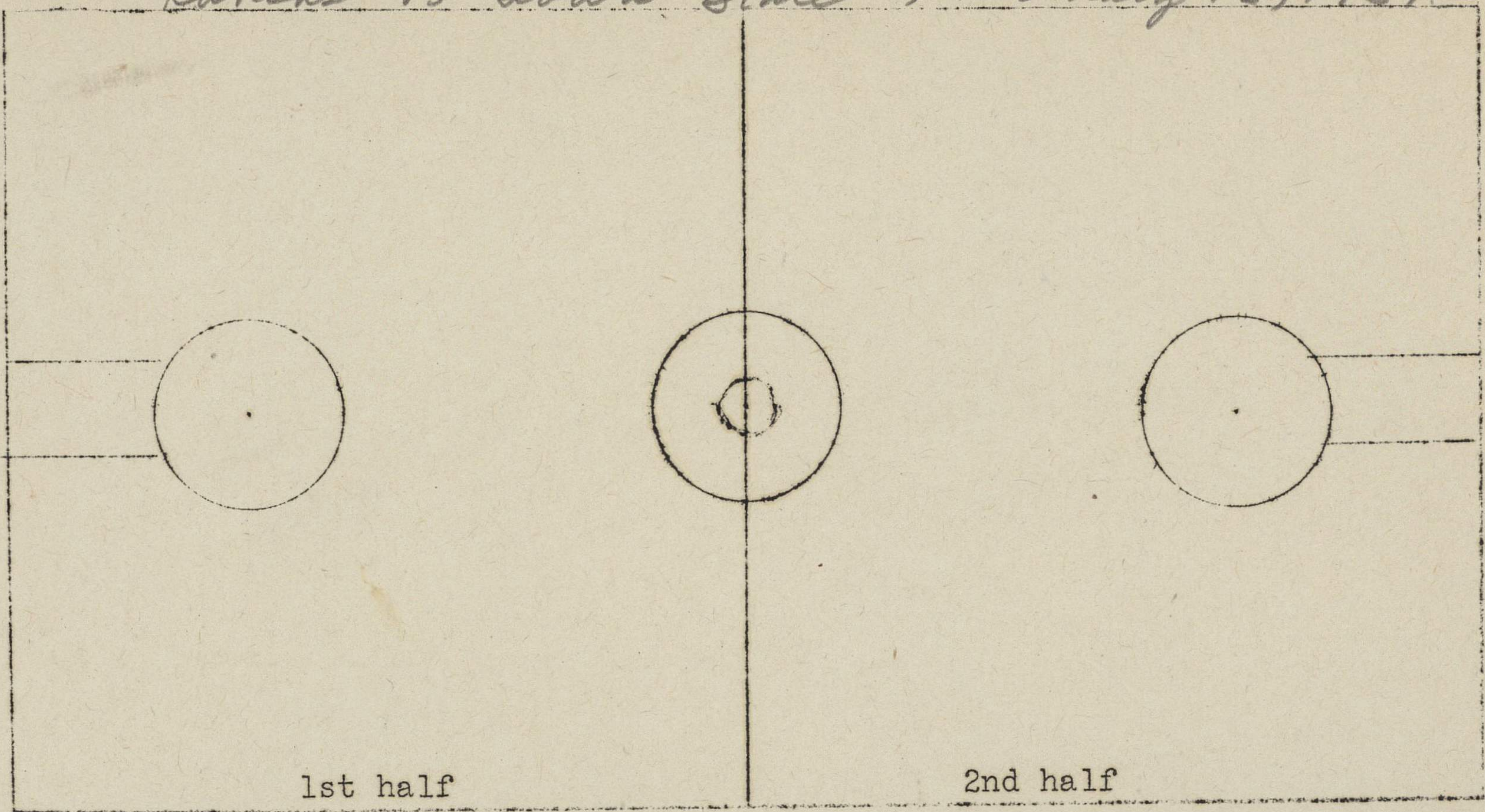
Team	No.
Kansas	
Lineup	No.
Rogers	4
Holliday	7
Schmidt	29
Durand	11
Boley	8
Wellhausen	3
Pralle	5
Noble	6
Lutton	14
Bosilovac	10

	1st half	2nd half	Total
Number of field goals attempted.	38	44	82
Successful attempts.	9	7	16
Number of free throws attempted.	14	10	23
Successful attempts.	6	3	9

Mark on court chart location where player attempts field goal.
 Mark number of player and, if attempt is successful, draw a circle around the number. 25
 Mark location of all personal fouls by p and by the number of man making foul-22p.
 If resulting in multiple throw, put circle around it-22p.

Bowles 75
 Kappelman 12
 Fugitt 55
 Corles 9
 Piper 27
 Wilener 13

Kansas vs Iowa State, February 13, 1937



1. Number of jump balls in center circle. 1st Half _____ Second _____ .
2. Number of jump balls in free-throw circles. 1st Half _____ 2nd _____ .
3. Number of center jumps _____ .
4. Number of fouls resulting in multiple throw 8 _____ .
5. Number of times ball out of bounds at end of court 18 _____ .
6. Would it have gone out if goals were set in 4 ft. 7 _____ .
7. Would it have gone out if goals were set in 6 ft. 1 _____ .
8. Number of times out of bounds as result of personal foul. 1st 11 2nd 10 .
9. Number of violations of 3 second rule. - _____ .
10. Number of times forced back over division line - _____ .
11. Number of times failed to bring ball over division line. - _____ .

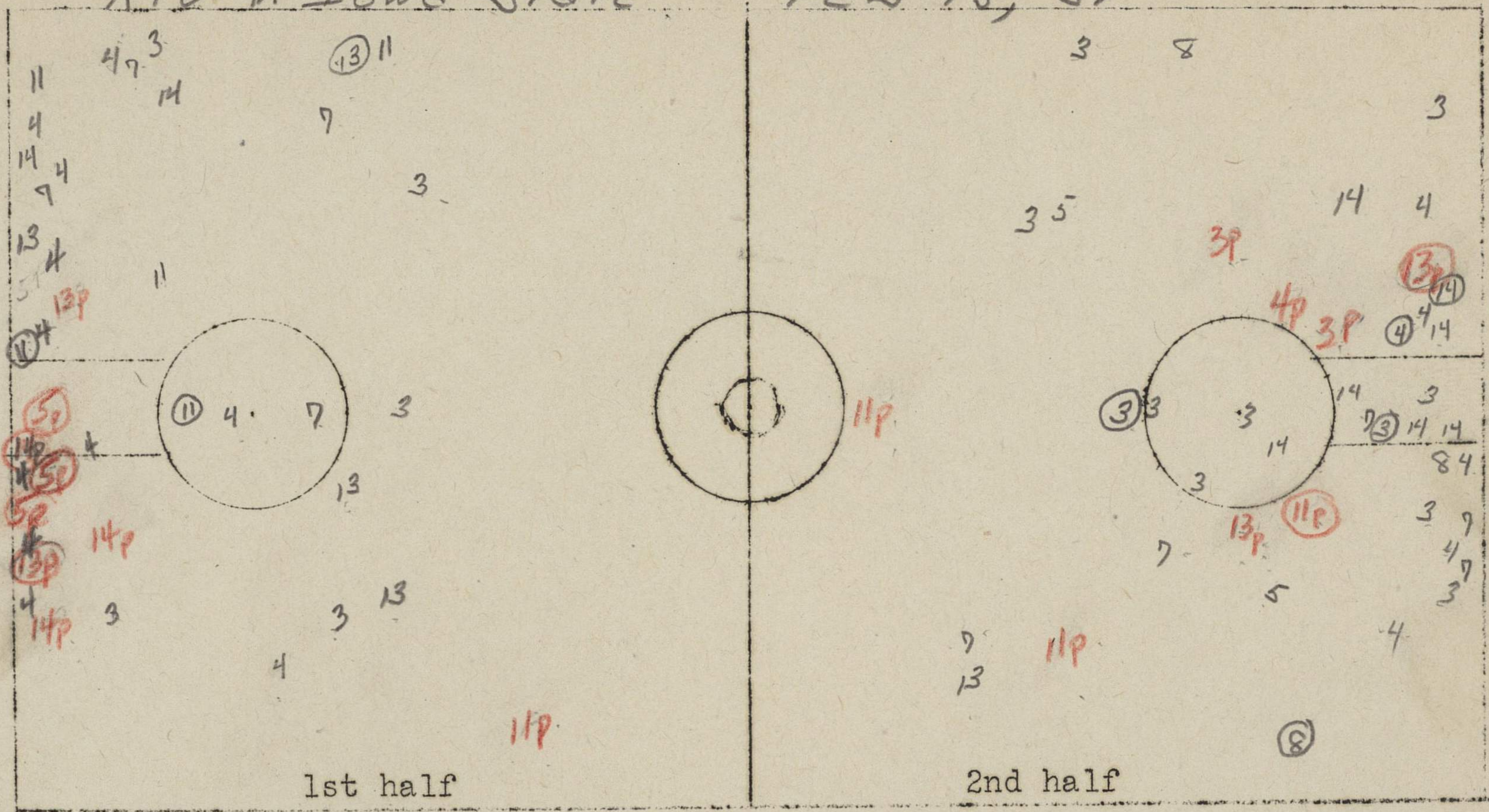
Team	No.
Lineup	

	1st half	2nd half
Number of field goals attempted.		
Successful attempts.		
Number of free throws attempted.		
Successful attempts.		

Mark on court chart location where player attempts field goal.
 Mark number of player and, if attempt is successful, draw a circle around the number. 25
 Mark location of all personal fouls by p and by the number of man making foul-22p.
 If resulting in multiple throw, put circle around it-22p.

K. U. v. Iowa State

Feb 13, '37



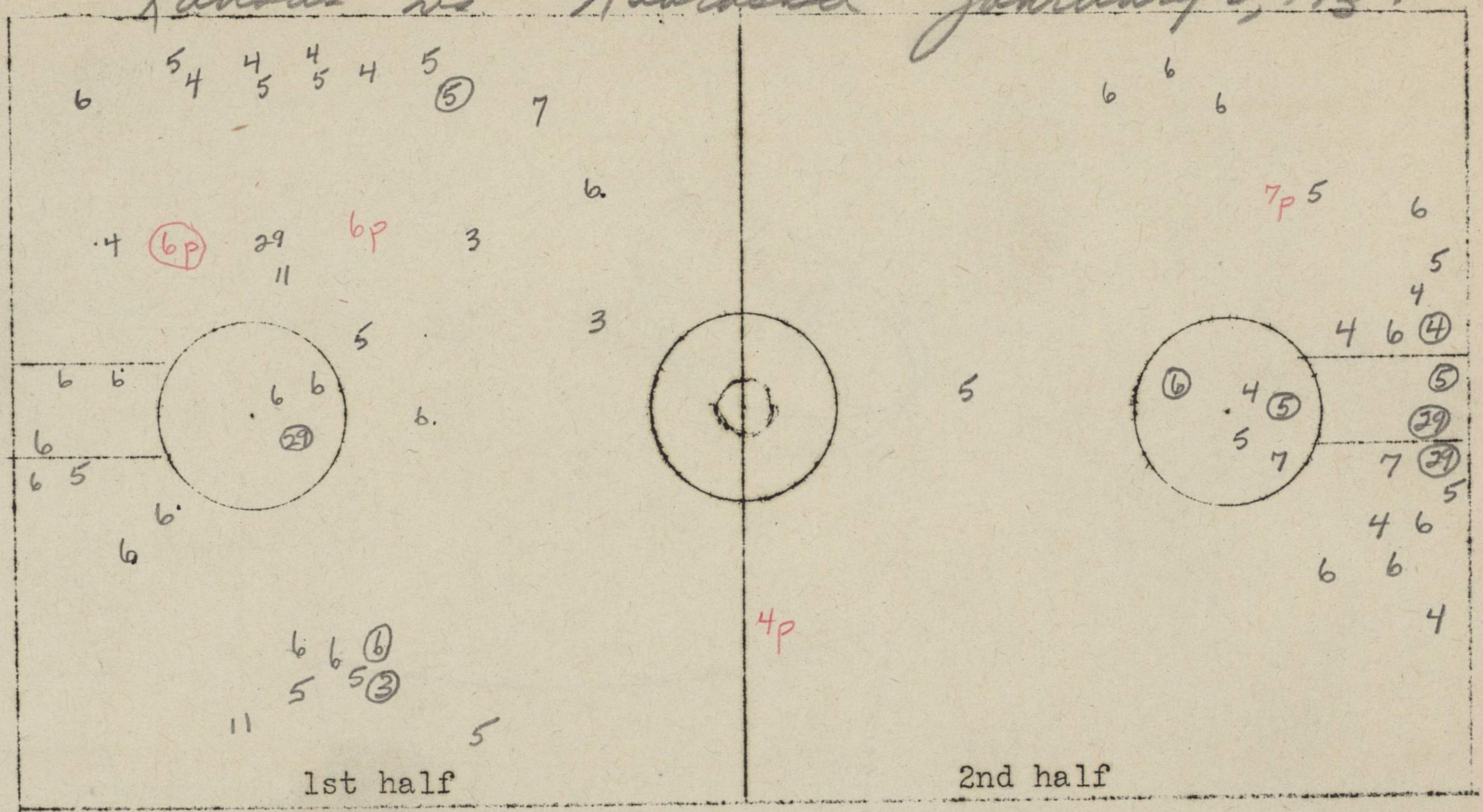
1. Number of jump balls in center circle. 1st Half _____ Second _____.
2. Number of jump balls in free-throw circles. 1st Half _____ 2nd _____.
3. Number of center jumps _____.
4. Number of fouls resulting in multiple throw _____.
5. Number of times ball out of bounds at end of court _____.
6. Would it have gone out if goals were set in 4 ft. _____.
7. Would it have gone out if goals were set in 6 ft. _____.
8. Number of times out of bounds as result of personal foul. 1st _____ 2nd _____.
9. Number of violations of 3 second rule. _____.
10. Number of times forced back over division line _____.
11. Number of times failed to bring ball over division line. _____.

Team <u>Iowa State</u>	
Lineup	No.
<u>Flemming</u>	4
<u>Rushmore</u>	8
<u>Kliebenstein</u>	7
<u>Johnson</u>	11
<u>Thomson</u>	14
<u>Heileman</u>	13
<u>Poole</u>	5
<u>Blohnik</u>	3

	1st half	2nd half	
Number of field goals attempted.	35	32	67
Successful attempts.	5	3	8
Number of free throws attempted.	(8)	(12)	
Successful attempts.	(4)	(6)	
	12		
	21		

Mark on court chart location where player attempts field goal.
 Mark number of player and, if attempt is successful, draw a circle around the number. 25
 Mark location of all personal fouls by p and by the number of man making foul-22p.
 If resulting in multiple throw, put circle around it-22p.

Kansas vs Nebraska January 2, 1937



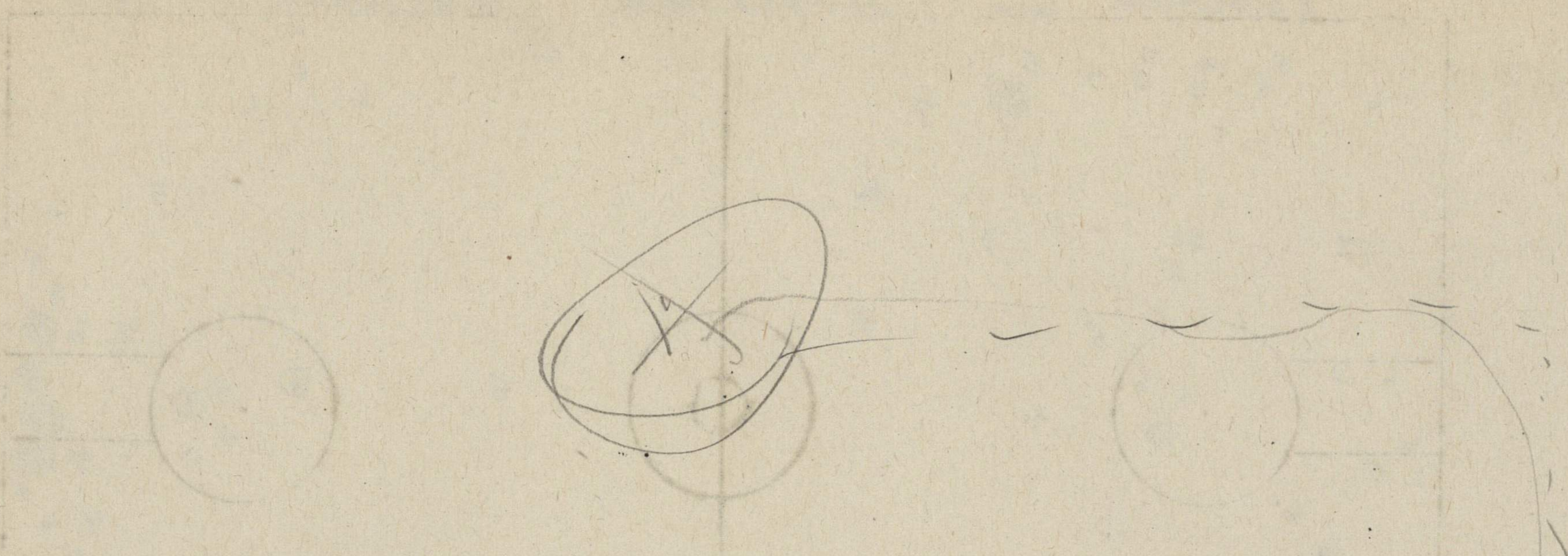
1. Number of jump balls in center circle. 1st Half _____ Second _____ .
2. Number of jump balls in free-throw circles. 1st Half _____ 2nd _____ .
3. Number of center jumps _____ .
4. Number of fouls resulting in multiple throw _____ .
5. Number of times ball out of bounds at end of court _____ .
6. Would it have gone out if goals were set in 4 ft. _____ .
7. Would it have gone out if goals were set in 6 ft. _____ .
8. Number of times out of bounds as result of personal foul. 1st _____ 2nd _____ .
9. Number of violations of 3 second rule. _____ .
10. Number of times forced back over division line _____ .
11. Number of times failed to bring ball over division line. _____ .

Team	Kansas	
Lineup		No.
Rogers		4
Schmidt		29
Holliday		7
Durand		11
Hellisen		3
Prulle		5
Noble		6

	1st half	2nd half	
Number of field goals attempted.	37	26	63
Successful attempts.	4	6	10
Number of free throws attempted.	5	8	
Successful attempts.	2	5	

63/10

Mark on court chart location where player attempts field goal.
 Mark number of player and, if attempt is successful, draw a circle around the number. 25
 Mark location of all personal fouls by p and by the number of man making foul-22p.
 If resulting in multiple throw, put circle around it-22p.



2nd half

Number of times called to pinch hit over division line.	Number of times called back over division line.	Number of violations of 20 second rule.	Number of times out of bounds as result of personal foul.	Number of times called out of bounds as result of foul.	Number of times called out of bounds as result of foul.	Number of times called out of bounds as result of foul.	Number of times called out of bounds as result of foul.

1st half 2nd half

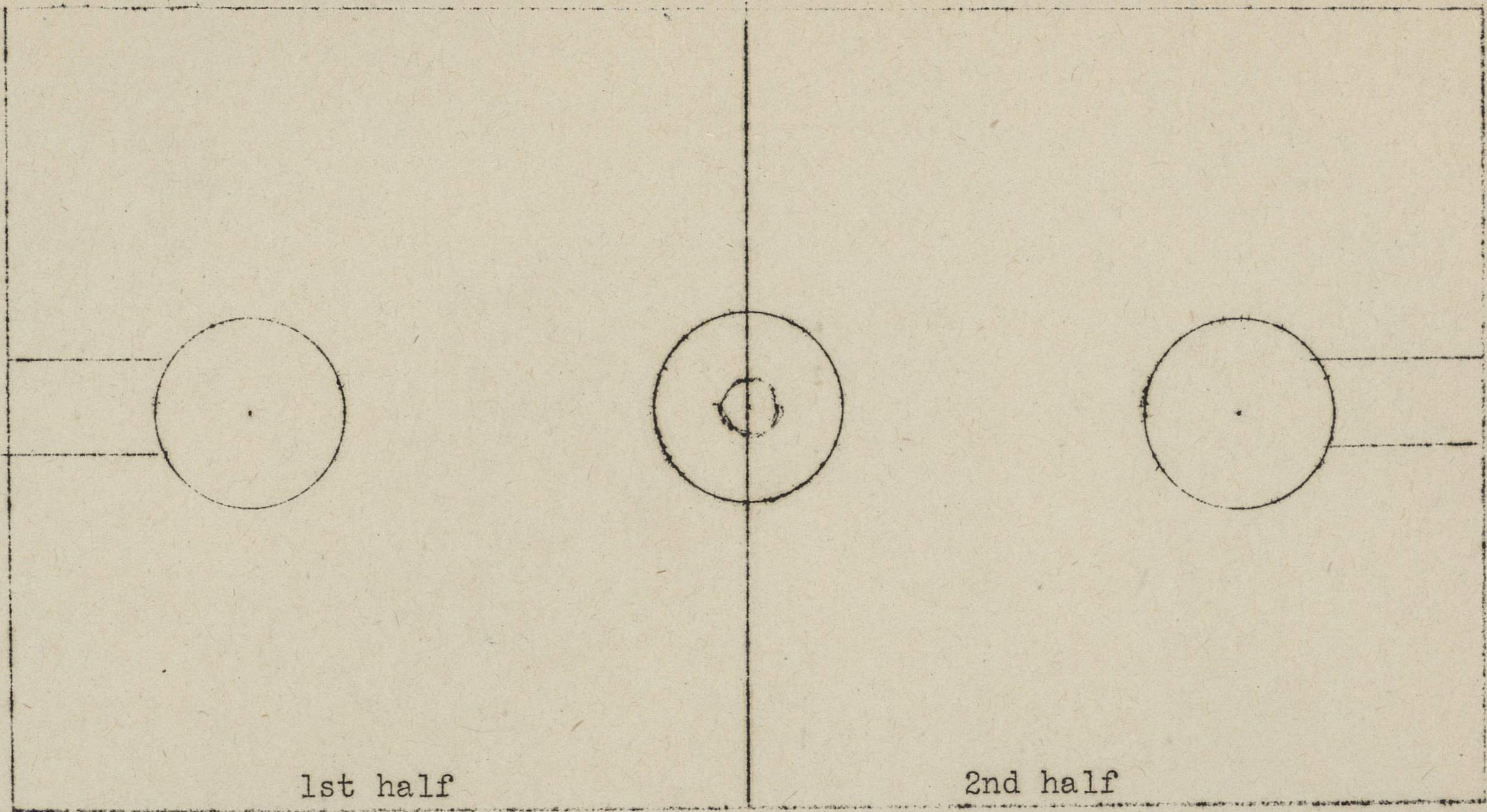
Number of field goals	Number of free throws	Number of successful attempts	Number of successful attempts

Player	Number of attempts	Number of successful attempts

If resulting in multiple fouls, the circle around ft-23p. Mark location of all personal fouls by p and by the number of fouls made (e.g., p-3p). Mark number of player and, if attempt is successful, draw a circle around the number. 25 Mark on court chart location where player attempts field goal.

Kansas vs Nebraska

Feb. 2 - 1937



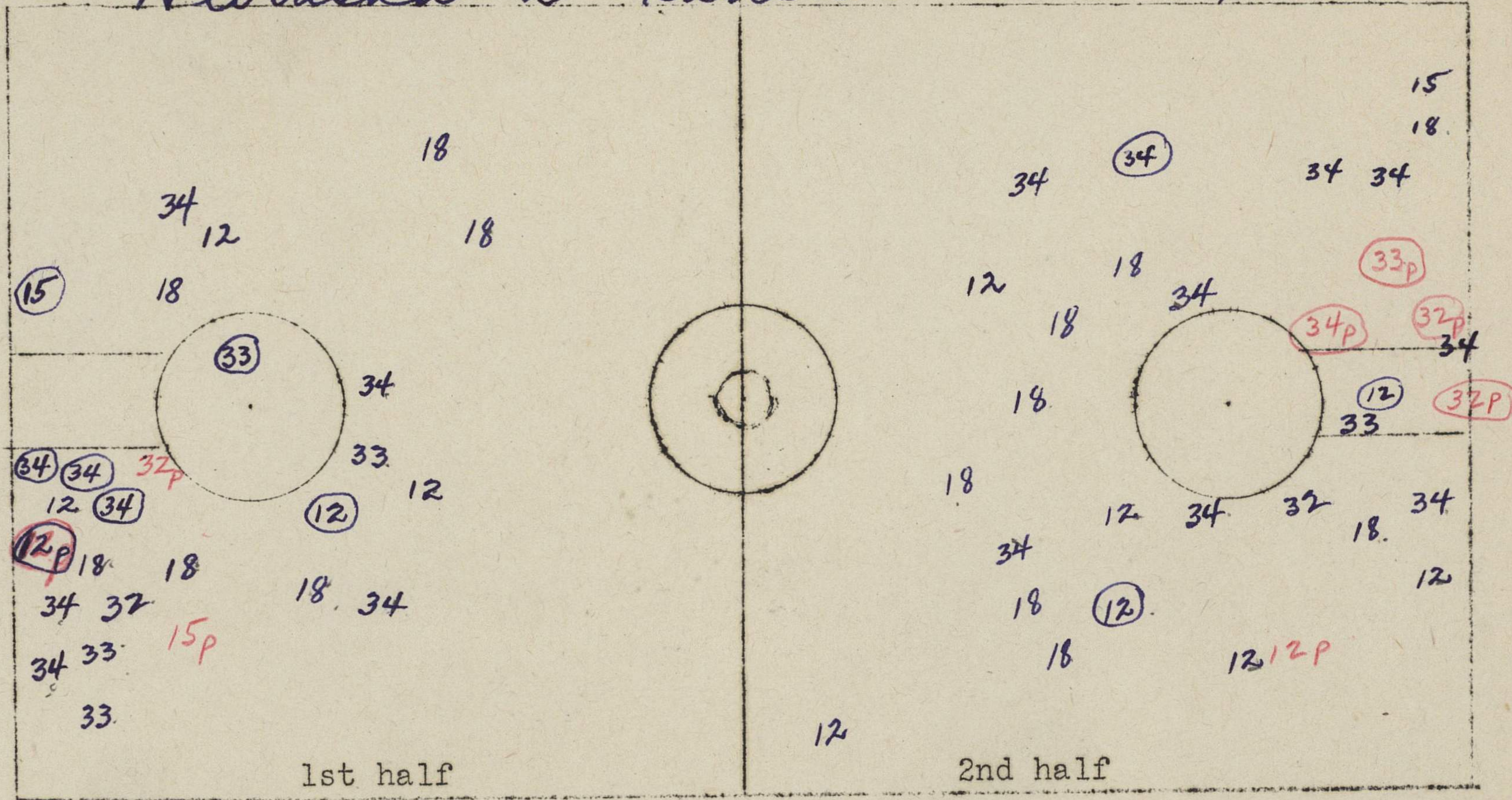
1. Number of jump balls in center circle. 1st Half _____ Second _____
2. Number of jump balls in free-throw circles. 1st Half _____ 2nd _____
3. Number of center jumps _____
4. Number of fouls resulting in multiple throw _____
5. Number of times ball out of bounds at end of court 14
6. Would it have gone out if goals were set in 4 ft. 3
7. Would it have gone out if goals were set in 6 ft. 0
8. Number of times out of bounds as result of personal foul. 1st _____ 2nd _____
9. Number of violations of 3 second rule. 1
10. Number of times forced back over division line 0
11. Number of times failed to bring ball over division line. 0

Team	No.
Lineup	

	1st half	2nd half
Number of field goals attempted.		
Successful attempts.		
Number of free throws attempted.		
Successful attempts.		

Mark on court chart location where player attempts field goal.
 Mark number of player and, if attempt is successful, draw a circle around the number. 25
 Mark location of all personal fouls by p and by the number of man making foul-22p.
 If resulting in multiple throw, put circle around it-22p.

Nebraska vs Kansas 2-2-27



1. Number of jump balls in center circle. 1st Half _____ Second _____ .
2. Number of jump balls in free-throw circles. 1st Half _____ 2nd _____ .
3. Number of center jumps _____ .
4. Number of fouls resulting in multiple throw _____ .
5. Number of times ball out of bounds at end of court _____ .
6. Would it have gone out if goals were set in 4 ft. _____ .
7. Would it have gone out if goals were set in 6 ft. _____ .
8. Number of times out of bounds as result of personal foul. 1st _____ 2nd _____ .
9. Number of violations of 3 second rule. _____ .
10. Number of times forced back over division line _____ .
11. Number of times failed to bring ball over division line. _____ .

Team	Nebraska	
Lineup		No.
✓ BAKER		12
✓ HALE		13
✓ AMEN		33
✓ KOVANDA		15
✓ LEDAUGH		32
✓ WERNER		16
✓ PARSONS		18
✓ DOHRMAN		20
✓ SORENSON		34
✓ BAXTER		35

	1st half	2nd half
Number of field goals attempted.	24	27
Successful attempts.	6	3
Number of free throws attempted.	4	2
Successful attempts.	3	1

Mark on court chart location where player attempts field goal.
 Mark number of player and, if attempt is successful, draw a circle around the number. 25
 Mark location of all personal fouls by p and by the number of man making foul-22p.
 If resulting in multiple throw, put circle around it-22p.

75A.

$$\begin{array}{r} 11 \\ 51 \overline{) 90} \\ \underline{51} \\ 90 \end{array}$$

K. U. NEWS BUREAU SPORTS SERVICE—BASKETBALL

KANSAS vs. Nebraska

Feb. 2, 1937

First

HALF

KANSAS vs.

DATE

4 Rogers f	0																			
7 Holliday f				[
3 Wellhausen																				
5 Pralle g																				
6 Noble g		p	x																	
29 Schmitt f																				
11 Durand g																				
Nebraska																				
12 Baker f		p																		
33 Amen f		p	3																	
32 Ebaugh c																				
18 Parsons g																				
34 Sorrenson g																				
<u>8</u>																				

Handwritten notes and symbols on the table grid:

- Row 1 (Rogers): '0' in column 2.
- Row 2 (Holliday): '[', '3', 'x', '1', 'x', ']' in columns 4, 6, 7, 10, 11, 12.
- Row 3 (Wellhausen): '10', 'x' in columns 19, 20.
- Row 4 (Pralle): ']', ']' in columns 10, 11.
- Row 5 (Noble): 'p', 'x', '5', 'x', ']' in columns 2, 3, 7, 8, 12.
- Row 6 (Schmitt): '[', '5', 'x', ']', ']' in columns 4, 7, 8, 11, 12.
- Row 8 (Amen): 'p', '3', 'x', '10', 'x', 'p', 'p' in columns 2, 3, 4, 6, 7, 9, 10.
- Row 9 (Parsons): '1', 'x', '7', 'x', '8', 'x', '12', 'x', '14', 'x' in columns 2, 3, 4, 5, 6, 7, 9, 10, 11, 12.
- Row 10 (Sorrenson): '5', 'x', 'x', 'x', 'x', 'x' in columns 2, 3, 4, 5, 6, 7.
- Row 11 (8): '5', 'x', 'x' in columns 19, 20, 21.
- Row 12 (Nebraska): 'p', '3', 'x', ']' in columns 2, 3, 4, 12.

K. U. NEWS BUREAU SPORTS SERVICE—BASKETBALL

KANSAS vs.

Nebraska

DATE

Feb. 2 1937

Second

HALF

4 Rogers f

12 X

27 0

7 Holliday f

]

3 Wellhausen c

0

19 20

25

26 0

0

5 Pralle g

14 X

6 Noble g

16 X

p

21 0

23 X

29 Schmidt f

18 X

Nebraska

12 Baker f

16 0

20 7 X

22 X

p

33 Amen f

]

]

p

]

32 Ebaugh c

p

18 Parsons g

23 Sorreshon g

18 X

p

]

15 Kovanda f

[

[

]

13 Hale f

16 Werner f

]

]

20 Bohrmunt

35 Baxter c

]

]