

K. U. NEWS BUREAU SPORTS SERVICE—BASKETBALL

KANSAS vs.

Baker

DATE

Dec 16-36

Overtime  
HALF

Jolley f  
~~Haliday~~  
Noble c  
Sutton g  
Pralle g  
Corlis f

J

36  
X p

p

33  
34

L



Baker  
Beiser f  
Inear f  
Heine c  
Schreyg  
Rudolph

p

o

34  
X

35-  
o







K. U. NEWS BUREAU SPORTS SERVICE—BASKETBALL

KANSAS vs.

Baker

DATE

Dec 16-36

First

HALF

Golay 33	p					7 8						18 X	20 X
Corlis 76		2 0											
Nobless				4 X		5 6			10 X			16 X	
Futton 44	0												
Pralle 99								1 0	12 0				
Ba													
Beisen 55	b								p			11 X	13 X
Zear 60													
Heine 57		2 X	4 X						p				8
Schrey 56	o												
Rudolph 9	p								7 0				



Kansas- Baker Basketball, Dec. 16, 1936 at Baldwin.

<u>Kansas</u>	<u>Goals</u>	<u>FT</u>	<u>MFT</u>	<u>TP</u>	<u>PF</u>	<u>Min.Pld.</u>
Golay, f	3	2 3	0	9 <del>8</del>	2	35
Corlis, f	1	1	0 1	3	0	33
Noble, c	3	2	0	8	1	45
Pralle, g	3	4	0	10	2	45
Lutton, g	0	1	0	1	1	38
Holliday, f	2	1	0	5	1	22
Weidner, g	0	0	0	0	0	7
Totals	<u>12</u>	<u>12</u>	<u>1</u>	<u>36</u>	<u>7</u>	<u>225</u>

<u>Baker</u>				<u>15</u>		
Beiser, f	5	0	0	10 <del>15</del>	3	45
Quear, f	3	1	0	7	3	45
Heine, c	4	1	1 4	9	1	45
Schrey, g	3	0	1	6	2	45
Rudolph, g	1	1	0	3	0	45
Totals	<u>16</u>	<u>3</u>	<u>5</u>	<u>35</u>	<u>9</u>	<u>225</u>

Score by periods;

	1st.	2nd.	Ovrtm	Ttl
Kansas	20	12	4	36
Baker	13	19	3	35

Officials---E. C. Quigley and Gene Kemper.

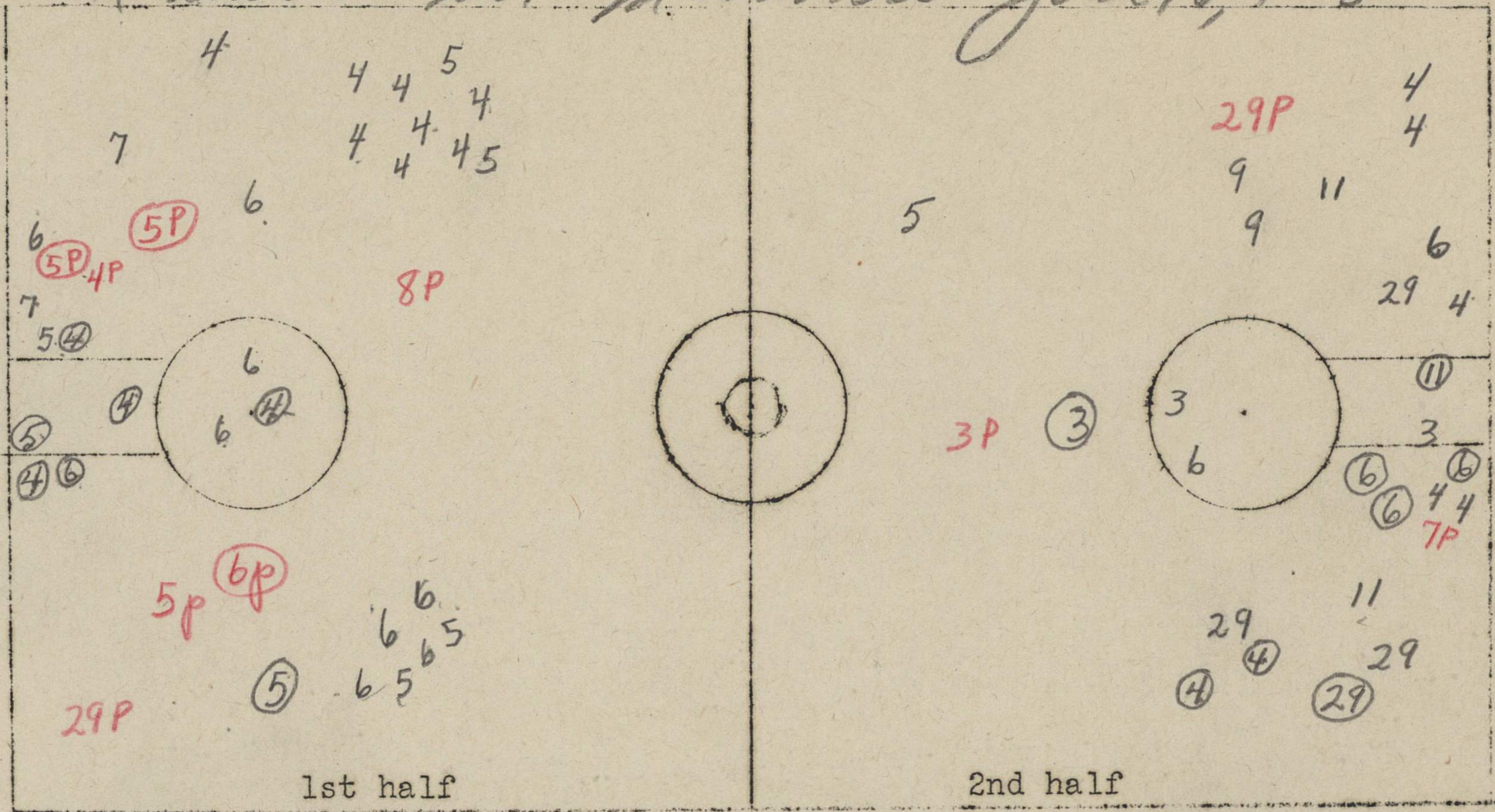
--







# Kansas vs. Missouri Jan 16, 1936



1. Number of jump balls in center circle. 1st Half \_\_\_\_\_ Second \_\_\_\_\_.
2. Number of jump balls in free-throw circles. 1st Half \_\_\_\_\_ 2nd \_\_\_\_\_.
3. Number of center jumps \_\_\_\_\_.
4. Number of fouls resulting in multiple throw \_\_\_\_\_.
5. Number of times ball out of bounds at end of court \_\_\_\_\_.
6. Would it have gone out if goals were set in 4 ft. \_\_\_\_\_.
7. Would it have gone out if goals were set in 6 ft. \_\_\_\_\_.
8. Number of times out of bounds as result of personal foul. 1st \_\_\_\_\_ 2nd \_\_\_\_\_.
9. Number of violations of 3 second rule. \_\_\_\_\_.
10. Number of times forced back over division line \_\_\_\_\_.
11. Number of times failed to bring ball over division line. \_\_\_\_\_.

Team	Kansas	
Lineup	No.	
Noble	6	
Lutton	14	
Holliday	7	
Schmidt	29	
Hellhausen	3	
Kappelman	12	
Rogers	4	
D. Howard	11	
Pralle	5	
Corliss	9	

	1st half	2nd half
Number of field goals attempted.	30	25
Successful attempts.	6	8 31 <sup>of 10</sup>
Number of free throws attempted.	6	9
Successful attempts.	5	4

Mark on court chart location where player attempts field goal.

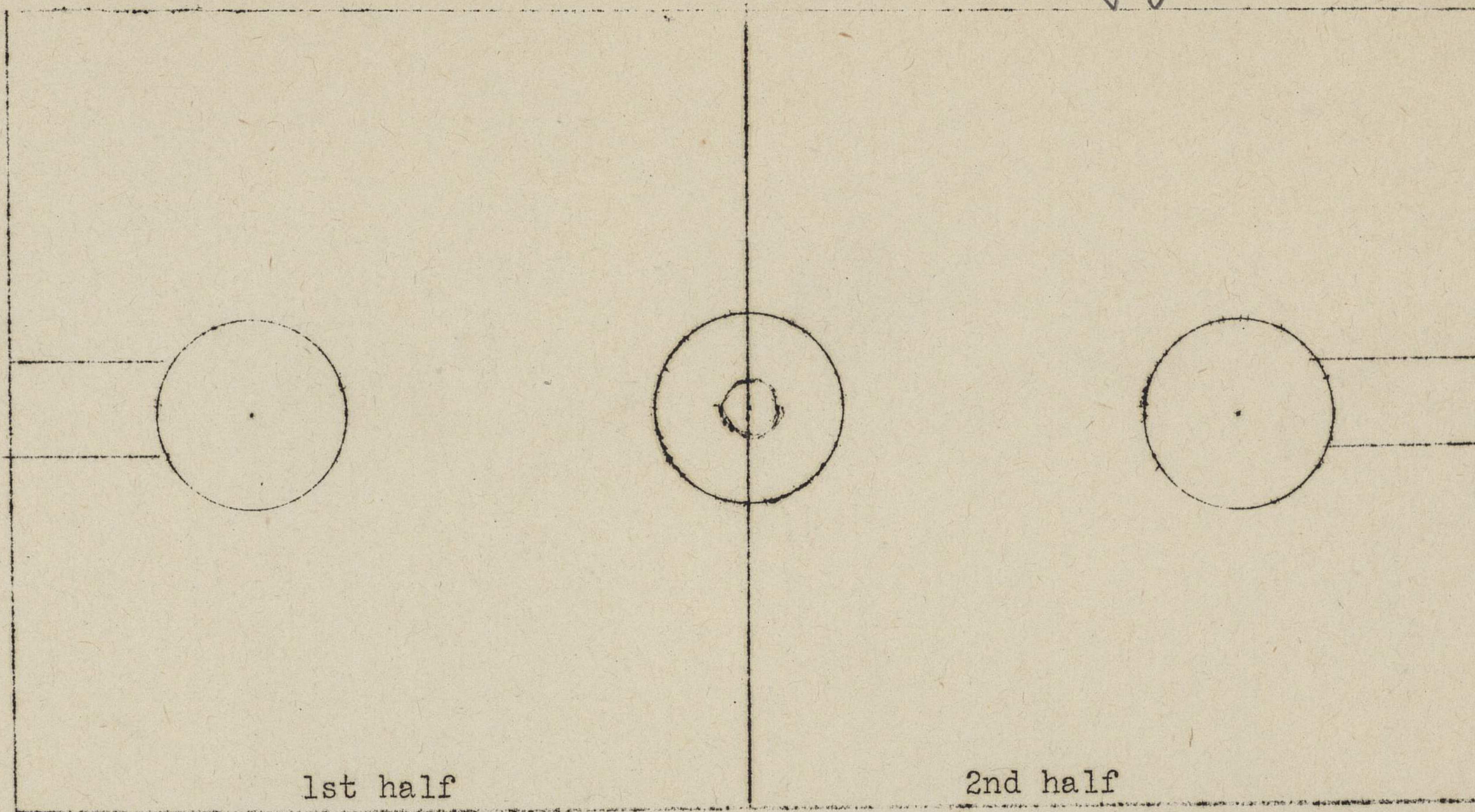
Mark number of player and, if attempt is successful, draw a circle around the number. 25

Mark location of all personal fouls by p and by the number of man making foul-22p. If resulting in multiple throw, put circle around it-22p.

Golay 8  
Lutton (14)



Kansas vs Missouri  
Saturday Jan 16, 1937



1. Number of jump balls in center circle. 1st Half \_\_\_\_\_ Second \_\_\_\_\_ .
2. Number of jump balls in free-throw circles. 1st Half \_\_\_\_\_ 2nd \_\_\_\_\_ .
3. Number of center jumps \_\_\_\_\_ .
4. Number of fouls resulting in multiple throw 4 \_\_\_\_\_ .
5. Number of times ball out of bounds at end of court 16 \_\_\_\_\_ .
6. Would it have gone out if goals were set in 4 ft. 2 \_\_\_\_\_ .
7. Would it have gone out if goals were set in 6 ft. \_\_\_\_\_ .
8. Number of times out of bounds as result of personal foul. 1st \_\_\_\_\_ 2nd \_\_\_\_\_ .
9. Number of violations of 3 second rule. 1 \_\_\_\_\_ .
10. Number of times forced back over division line \_\_\_\_\_ .
11. Number of times failed to bring ball over division line. \_\_\_\_\_ .

Team _____	No.
Lineup	

	1st half	2nd half
Number of field goals attempted.		
Successful attempts.		
Number of free throws attempted.		
Successful attempts.		

Mark on court chart location where player attempts field goal.  
 Mark number of player and, if attempt is successful, draw a circle around the number. 25  
 Mark location of all personal fouls by p and by the number of man making foul-22p.  
 If resulting in multiple throw, put circle around it-22p.



















Kansas Missouri Basketball, Jan. 16, 1937.  
 Official box score.

Kansas	G	FT	MFT	PF	Missouri	G	FT	MFT	PF
Rogers, f	6	1		1	Henderson, f		1	2	
Holliday, f				1	Hatfield, f				1
Wellhausen, c	1	1	2	0	Brown, c	3	4		3
Pralle, g	2	2	1	3	Bredenhoeft, g	2	0	2	1
Noble, g	4	3	0	2	Beer, g	2			1
Schmidt, f	1	2	0	2	Garroll, f	1	1	2	2
Durand, f	1				Brookfield, f	1	1	1	4
Lutton, c					Keirseey, g				1
Corlis, g					Colson, g				
Kappelma, g					Strom, c	1			
Golay			1	1		10	7	7	13
	15	9	4	10					

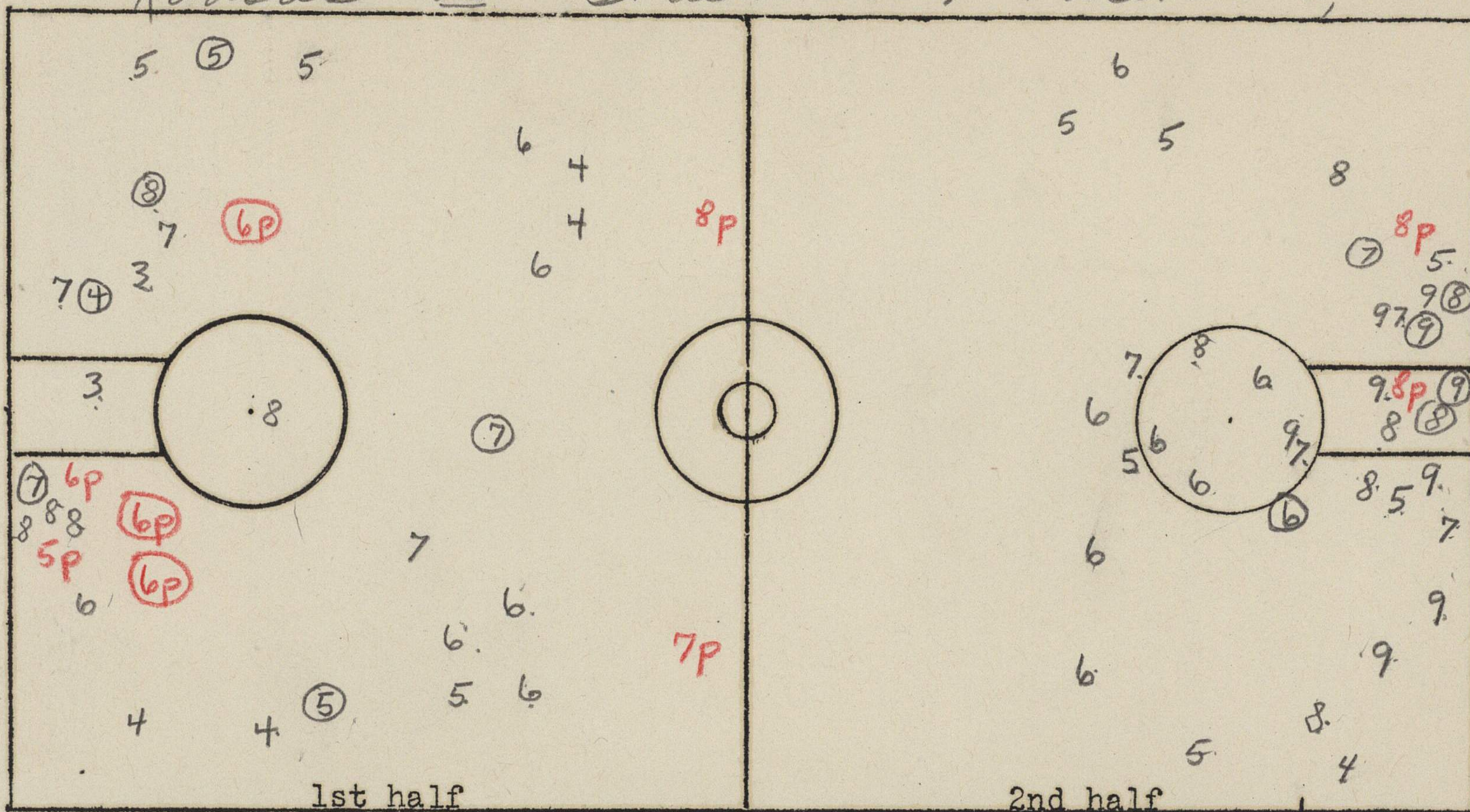
Officials---Pat Mason, Rockhurst; Paris Carroll, Kansas City.







Kansas vs. Stashburn, December 3, 1936.



1. Number of jump balls in center circle. 1st Half \_\_\_\_\_ Second \_\_\_\_\_
2. Number of jump ball in free-throw circles. 1st Half \_\_\_\_\_ 2nd \_\_\_\_\_
3. Number of center jumps \_\_\_\_\_
4. Number of fouls resulting in multiple throw \_\_\_\_\_
5. Number of times ball out of bounds at end of court \_\_\_\_\_
6. Would it have gone out if goals were set in 4 ft. \_\_\_\_\_
7. Would it have gone out if goals were set in 6 ft. \_\_\_\_\_
8. Number of times out of bounds as result of personal foul. 1st \_\_\_\_\_ 2nd \_\_\_\_\_
9. Number of violations of 3 second rule. \_\_\_\_\_
10. Number of times forced back over division line \_\_\_\_\_
11. Number of times failed to bring ball over division line. \_\_\_\_\_

Team	Kansas	
Lineup	No.	
Moble	6	
Cox	3	
Corless	9	
Holliday	7	
Galay	33	
Roylks	4	
Lutton	44	
Kralle	5	

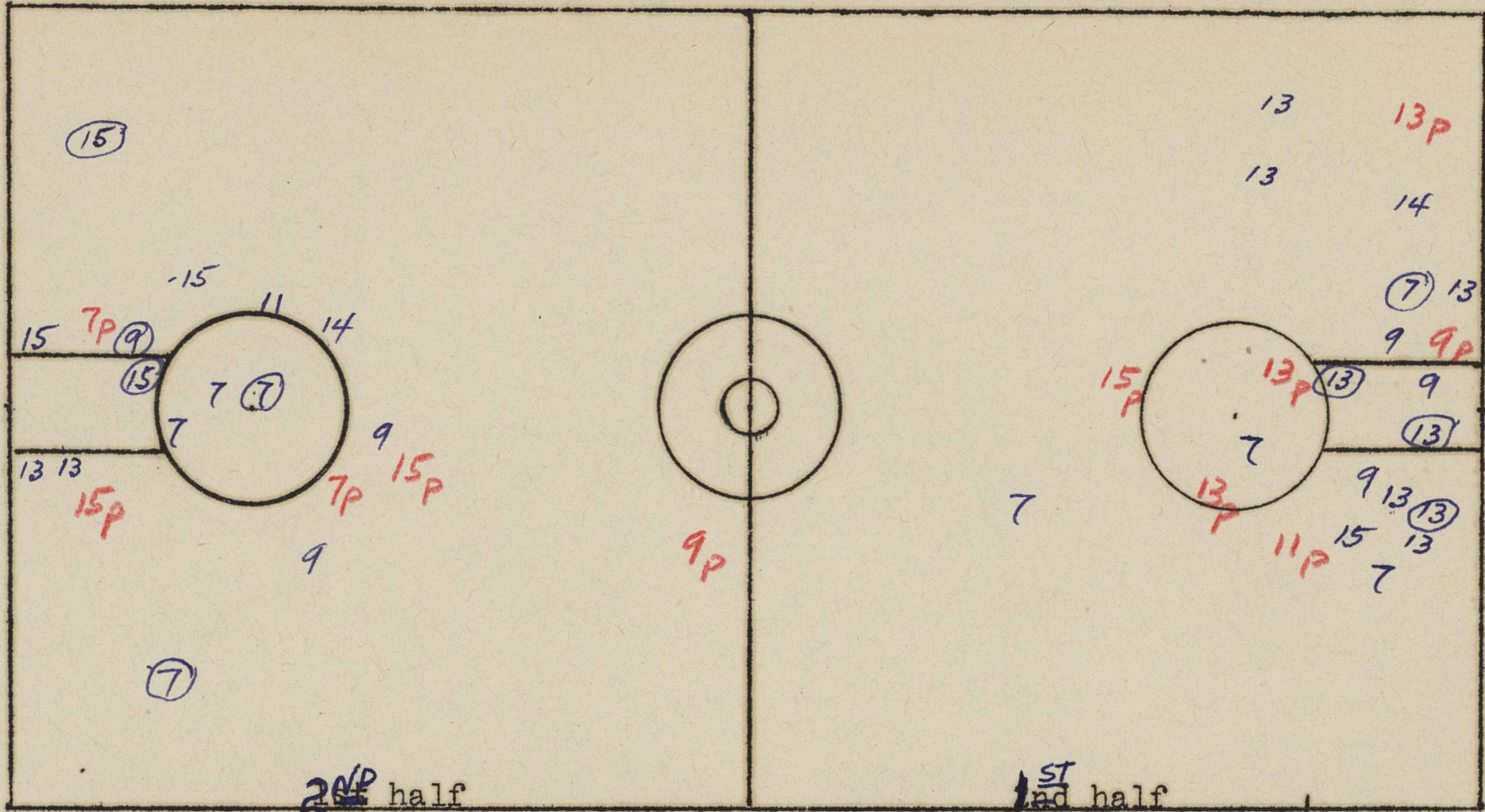
	1st half	2nd half
Number of field goals attempted.	28	36
Successful attempts.	6	6
Number of free throws attempted.	7	4
Successful attempts.	3	3

Mark on court chart location where player attempts field goal.  
 Mark number of player and, if attempt is successful, draw a circle around the number. 25  
 Mark location of all personal fouls by p and by the number of man making foul-22p.  
 If resulting in multiple throw, put circle around it- 22p.



# Kansas vs Washburn

December 3, 1936



1. Number of jump balls in center circle. 1st Half \_\_\_\_\_ Second \_\_\_\_\_.
2. Number of jump ball in free-throw circles. 1st Half \_\_\_\_\_ 2nd \_\_\_\_\_.
3. Number of center jumps \_\_\_\_\_.
4. Number of fouls resulting in multiple throw \_\_\_\_\_.
5. Number of times ball out of bounds at end of court \_\_\_\_\_.
6. Would it have gone out if goals were set in 4 ft. \_\_\_\_\_.
7. Would it have gone out if goals were set in 6 ft. \_\_\_\_\_.
8. Number of times out of bounds as result of personal foul. 1st \_\_\_\_\_ 2nd \_\_\_\_\_.
9. Number of violations of 3 second rule. \_\_\_\_\_.
10. Number of times forced back over division line \_\_\_\_\_.
11. Number of times failed to bring ball over division line. \_\_\_\_\_.

Team	WASHBURN	
Lineup		No.
SHULTIE		9
POLLNER		15
COLLARD		13
GILBERT		7
ROSKAM		14
SCHLICHER		11
DITTIMORE		10
MILLS		6
BROWN		17

	1st half	2nd half
Number of field goals attempted.	17	14
Successful attempts.	4	5
Number of free throws attempted.	11 (2)	11 (11)
Successful attempts.	1 (1)	11 (7)

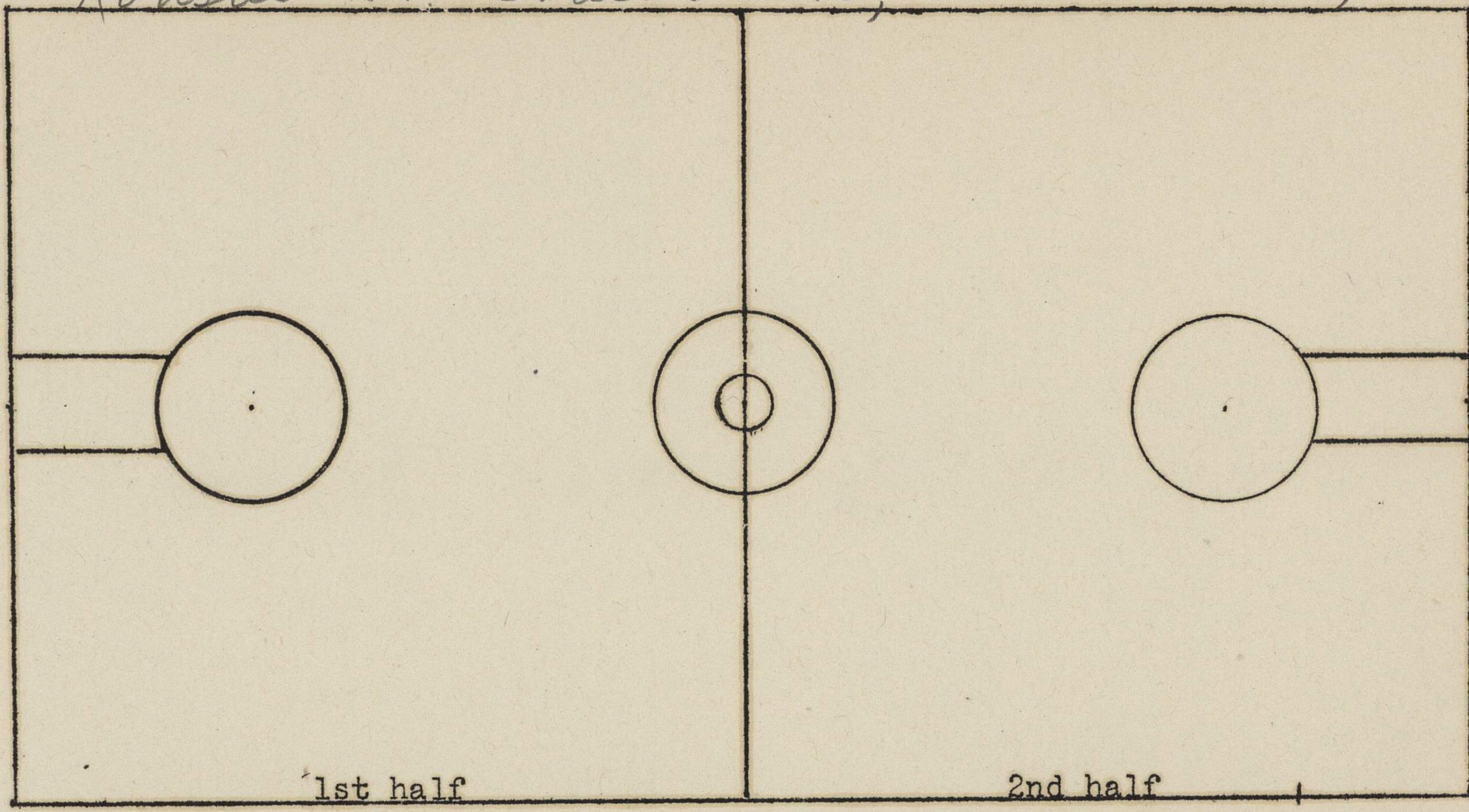
Mark on court chart location where player attempts field goal.

Mark number of player and, if attempt is successful, draw a circle around the number. 25

Mark location of all personal fouls by p and by the number of man making foul-22p. If resulting in multiple throw, put circle around it- 22p.



Kansas vs. Washburn, December 3, 1936



1. Number of jump balls in center circle. 1st Half \_\_\_\_\_ Second \_\_\_\_\_ .
2. Number of jump ball in free-throw circles. 1st Half 3 2nd 1 .
3. Number of center jumps 9 .
4. Number of fouls resulting in multiple throw 1 .
5. Number of times ball out of bounds at end of court 19 .
6. Would it have gone out if goals were set in 4 ft. 11 .
7. Would it have gone out if goals were set in 6 ft. 8 .
8. Number of times out of bounds as result of personal foul. 1st 4 2nd 8 .
9. Number of violations of 3 second rule. \_\_\_\_\_ .
10. Number of times forced back over division line \_\_\_\_\_ .
11. Number of times failed to bring ball over division line. \_\_\_\_\_ .

Team _____	No.
Lineup	
_____	
_____	
_____	
_____	
_____	
_____	
_____	

	1st half	2nd half
Number of field goals attempted.		
Successful attempts.		
Number of free throws attempted.		
Successful attempts.		

Mark on court chart location where player attempts field goal.  
 Mark number of player and, if attempt is successful, draw a circle around the number. 25  
 Mark location of all personal fouls by p and by the number of man making foul-22p.  
 If resulting in multiple throw, put circle around it- 22p.



Official Score---Wansas- Wasburn, Dec. 3, 1936

Kansas	Goals	Free Thr	Missed	Fr Th	Per.Fla
Noble, f	1				4
Cox, f			1		
Holliday, e	3	2	2		1
Rogers, g	1	1			
Pralle g	2	1	1		2
Golafy f	3	1	1		3
Corliss, g	2	1			
Lutton, g					
	12	6	5		18

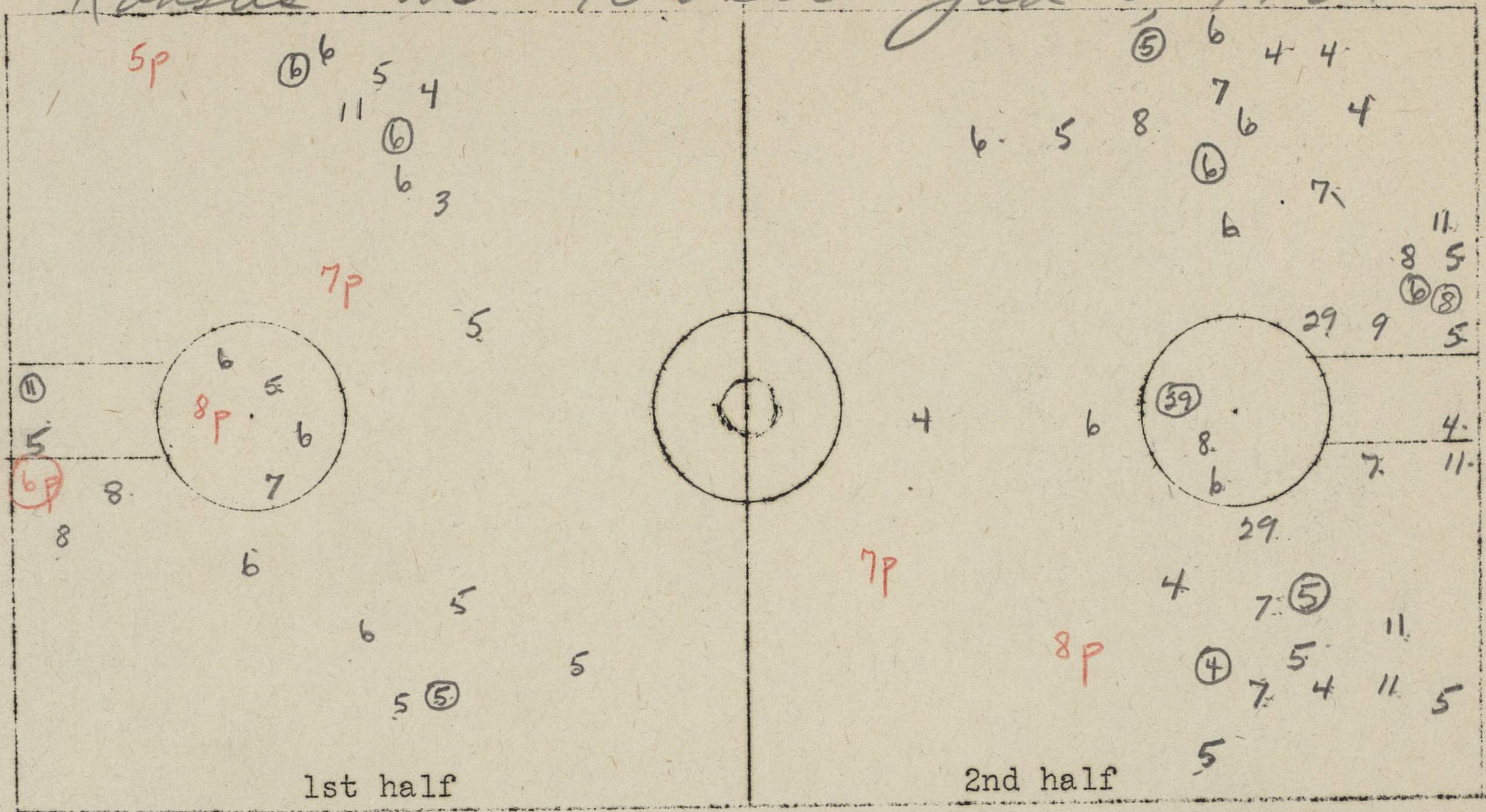
Wasburn	Goals	Fr.Thrs	Msd.Fr.Th	Per.Fla
Schulties, f	<del>2</del> <sup>1</sup>	2		2
Pollner, f	2	1		3
Collard, e	3	3	1	3
Gilbert, g	3		4	2
Roakam, g		2		
Mills, f				
Dittimore, f				
Brown, e				
Schlitter, .				1
	9	6	5	11







# Kansas vs Baker Jan 5 1936



1. Number of jump balls in center circle. 1st Half \_\_\_\_\_ Second \_\_\_\_\_.
2. Number of jump balls in free-throw circles. 1st Half \_\_\_\_\_ 2nd \_\_\_\_\_.
3. Number of center jumps \_\_\_\_\_.
4. Number of fouls resulting in multiple throw \_\_\_\_\_.
5. Number of times ball out of bounds at end of court \_\_\_\_\_.
6. Would it have gone out if goals were set in 4 ft. \_\_\_\_\_.
7. Would it have gone out if goals were set in 6 ft. \_\_\_\_\_.
8. Number of times out of bounds as result of personal foul. 1st \_\_\_\_\_ 2nd \_\_\_\_\_.
9. Number of violations of 3 second rule. \_\_\_\_\_.
10. Number of times forced back over division line \_\_\_\_\_.
11. Number of times failed to bring ball over division line. \_\_\_\_\_.

Team	Kansas	
Lineup	No.	
Holliday	7	
Golay	8	
Bosilovac	10	
Durand	11	
Shell'basen	3	
Rogers	4	
Mable	6	
Schmidt	29	
Pralle	5	

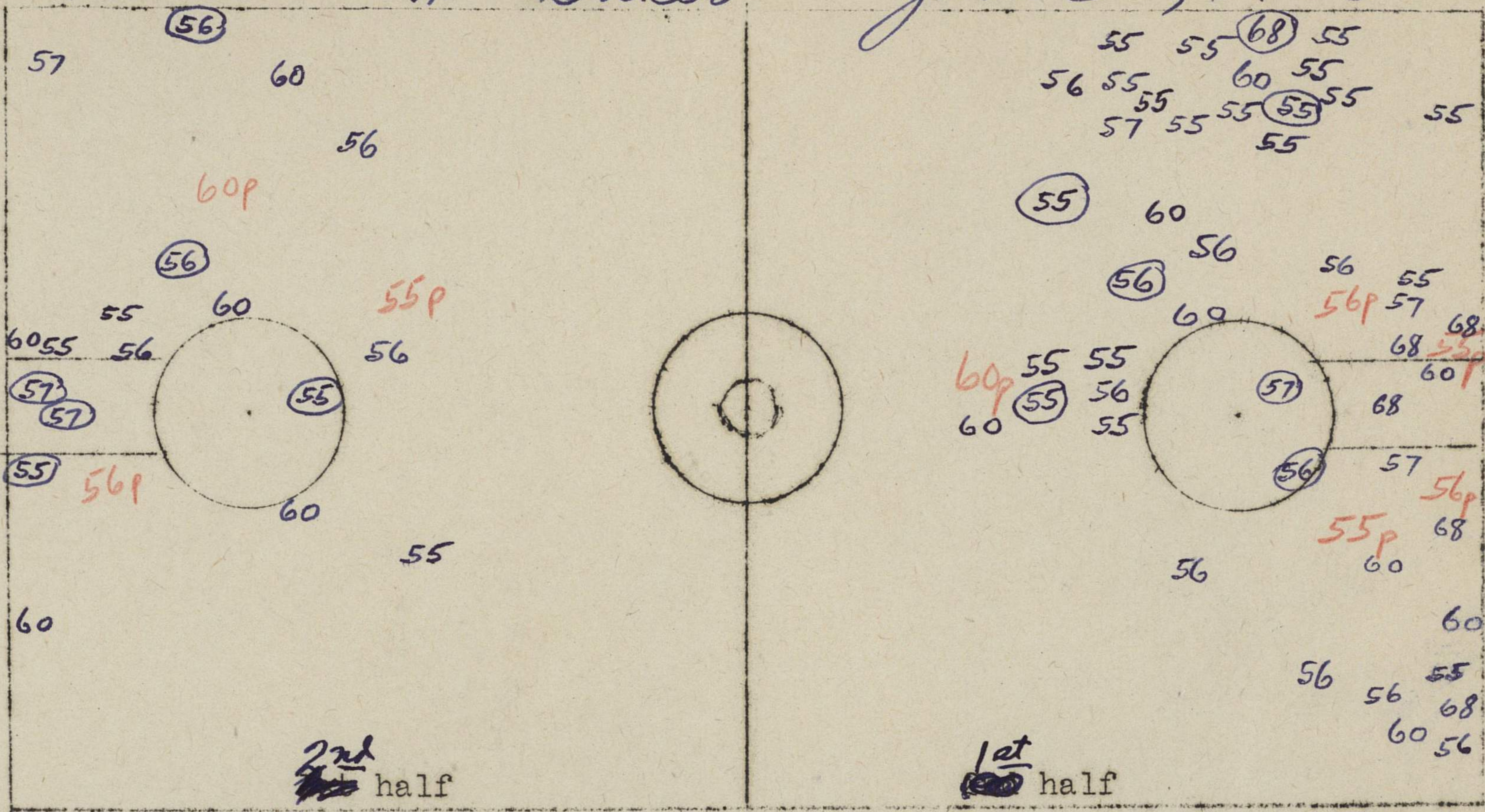
	1st half	2nd half
Number of field goals attempted.	22	41
Successful attempts.	4	7
Number of free throws attempted.	3	6
Successful attempts.	1	4

Mark on court chart location where player attempts field goal.  
 Mark number of player and, if attempt is successful, draw a circle around the number. 25  
 Mark location of all personal fouls by p and by the number of man making foul-22p.  
 If resulting in multiple throw, put circle around it-22p.



# Kansas vs Baker

Jan 5<sup>th</sup>, 1936



1. Number of jump balls in center circle. 1st Half \_\_\_\_\_ Second \_\_\_\_\_ .
2. Number of jump balls in free-throw circles. 1st Half \_\_\_\_\_ 2nd \_\_\_\_\_ .
3. Number of center jumps \_\_\_\_\_ .
4. Number of fouls resulting in multiple throw \_\_\_\_\_ .
5. Number of times ball out of bounds at end of court \_\_\_\_\_ .
6. Would it have gone out if goals were set in 4 ft. \_\_\_\_\_ .
7. Would it have gone out if goals were set in 6 ft. \_\_\_\_\_ .
8. Number of times out of bounds as result of personal foul. 1st \_\_\_\_\_ 2nd \_\_\_\_\_ .
9. Number of violations of 3 second rule. \_\_\_\_\_ .
10. Number of times forced back over division line \_\_\_\_\_ .
11. Number of times failed to bring ball over division line. \_\_\_\_\_ .

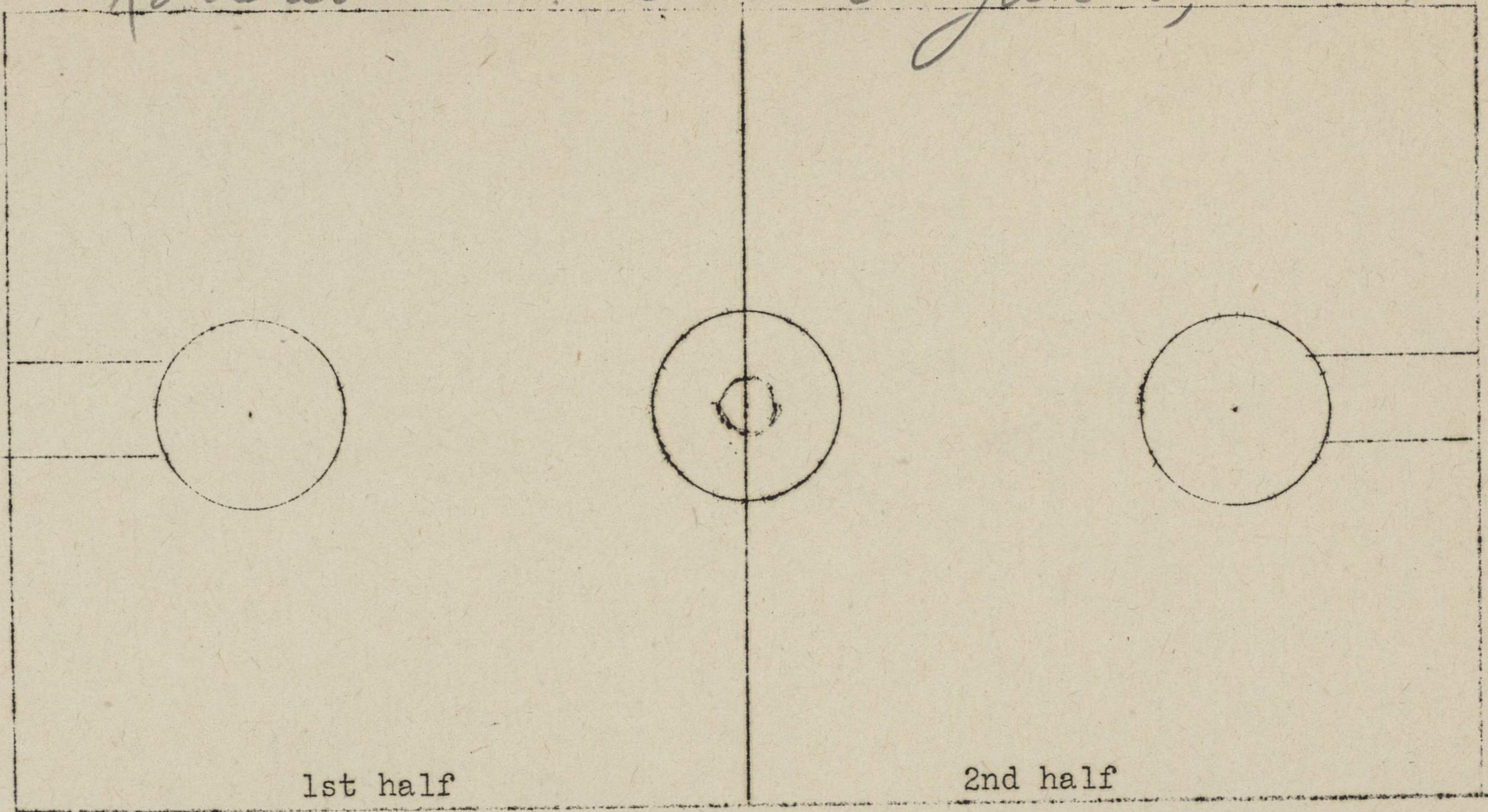
Team	No.
<u>Baker</u>	
Beiser	55
Quear	60
Heine	57
Rudolph	68
Schrey	57

	1st half	2nd half
Number of field goals attempted.	47	18-65
Successful attempts.	7	6-13
Number of free throws attempted.	4	3
Successful attempts.	2	3

Mark on court chart location where player attempts field goal.  
 Mark number of player and, if attempt is successful, draw a circle around the number. 25  
 Mark location of all personal fouls by p and by the number of man making foul-22p.  
 If resulting in multiple throw, put circle around it-22p.



# Kansas vs. Baker Jan 5, 1936



1. Number of jump balls in center circle. 1st Half \_\_\_\_\_ Second \_\_\_\_\_ .
2. Number of jump balls in free-throw circles. 1st Half \_\_\_\_\_ 2nd \_\_\_\_\_ .
3. Number of center jumps \_\_\_\_\_ .
4. Number of fouls resulting in multiple throw \_\_\_\_\_ .
5. Number of times ball out of bounds at end of court 13 .
6. Would it have gone out if goals were set in 4 ft. 4 .
7. Would it have gone out if goals were set in 6 ft. 9 .
8. Number of times out of bounds as result of personal foul. 1st 1 2nd 4 .
9. Number of violations of 3 second rule. \_\_\_\_\_ .
10. Number of times forced back over division line \_\_\_\_\_ .
11. Number of times failed to bring ball over division line. \_\_\_\_\_ .

Team	No.
Lineup	

	1st half	2nd half
Number of field goals attempted.		
Successful attempts.		
Number of free throws attempted.		
Successful attempts.		

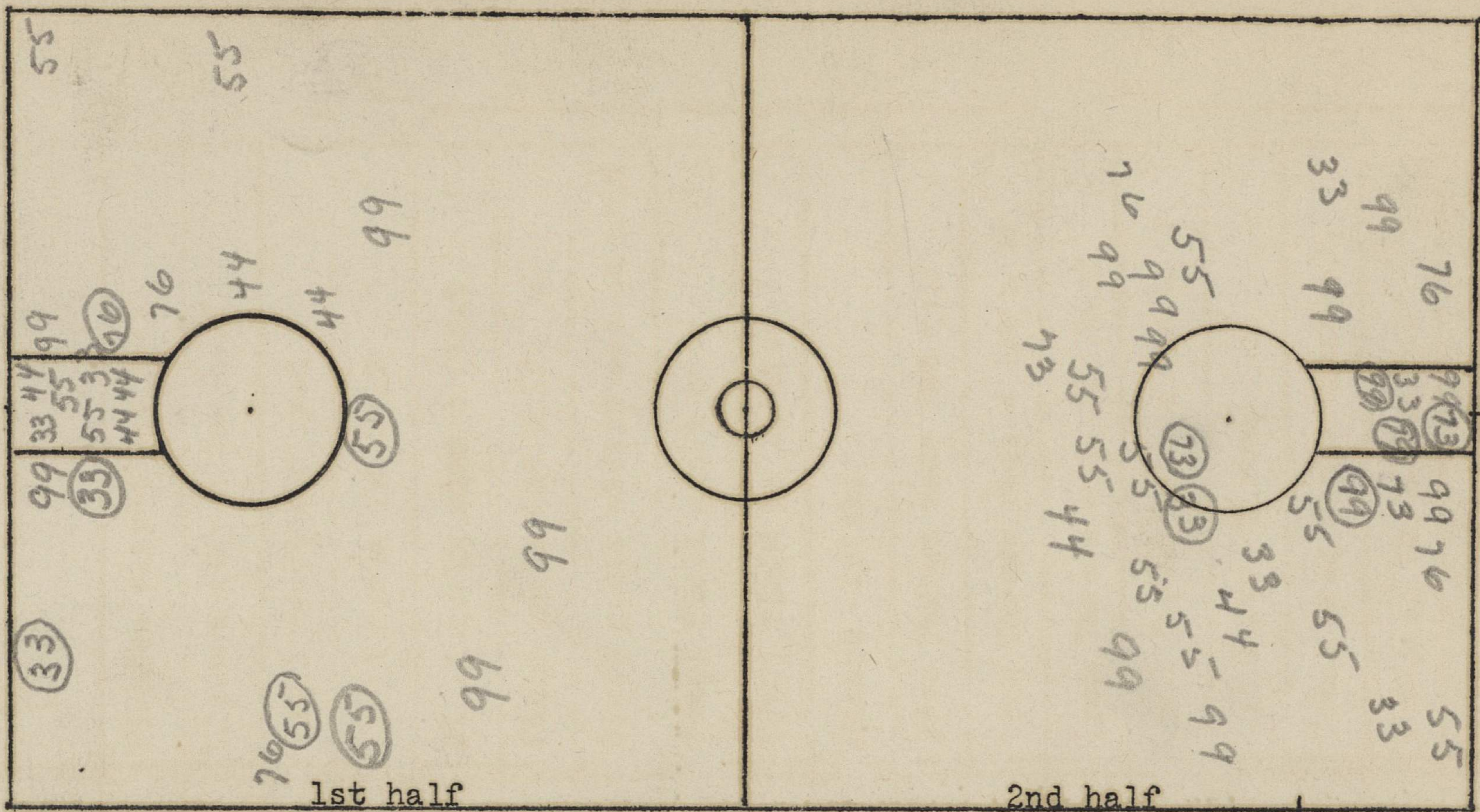
Mark on court chart location where player attempts field goal.  
 Mark number of player and, if attempt is successful, draw a circle around the number. 25  
 Mark location of all personal fouls by p and by the number of man making foul-22p.  
 If resulting in multiple throw, put circle around it-22p.







December 16<sup>th</sup>, 1936



1. Number of jump balls in center circle. 1st Half \_\_\_\_\_ Second \_\_\_\_\_.
2. Number of jump ball in free-throw circles. 1st Half \_\_\_\_\_ 2nd \_\_\_\_\_.
3. Number of center jumps \_\_\_\_\_.
4. Number of fouls resulting in multiple throw \_\_\_\_\_.
5. Number of times ball out of bounds at end of court \_\_\_\_\_.
6. Would it have gone out if goals were set in 4 ft. \_\_\_\_\_.
7. Would it have gone out if goals were set in 6 ft. \_\_\_\_\_.
8. Number of times out of bounds as result of personal foul. 1st \_\_\_\_\_ 2nd \_\_\_\_\_.
9. Number of violations of 3 second rule. \_\_\_\_\_.
10. Number of times forced back over division line \_\_\_\_\_.
11. Number of times failed to bring ball over division line. \_\_\_\_\_.

Team	No.
Galay	33
Carlipo	76
Noble	55
Pralle	99
Luttan	44
Weidner	
Holliday	73

	1st half	2nd half
Number of field goals attempted.	24	35
Successful attempts.	6	6
Number of free throws attempted.	8	5
Successful attempts.	8	4

Mark on court chart location where player attempts field goal.  
 Mark number of player and, if attempt is successful, draw a circle around the number. 25  
 Mark location of all personal fouls by p and by the number of man making foul-22p.  
 If resulting in multiple throw, put circle around it- 22p.

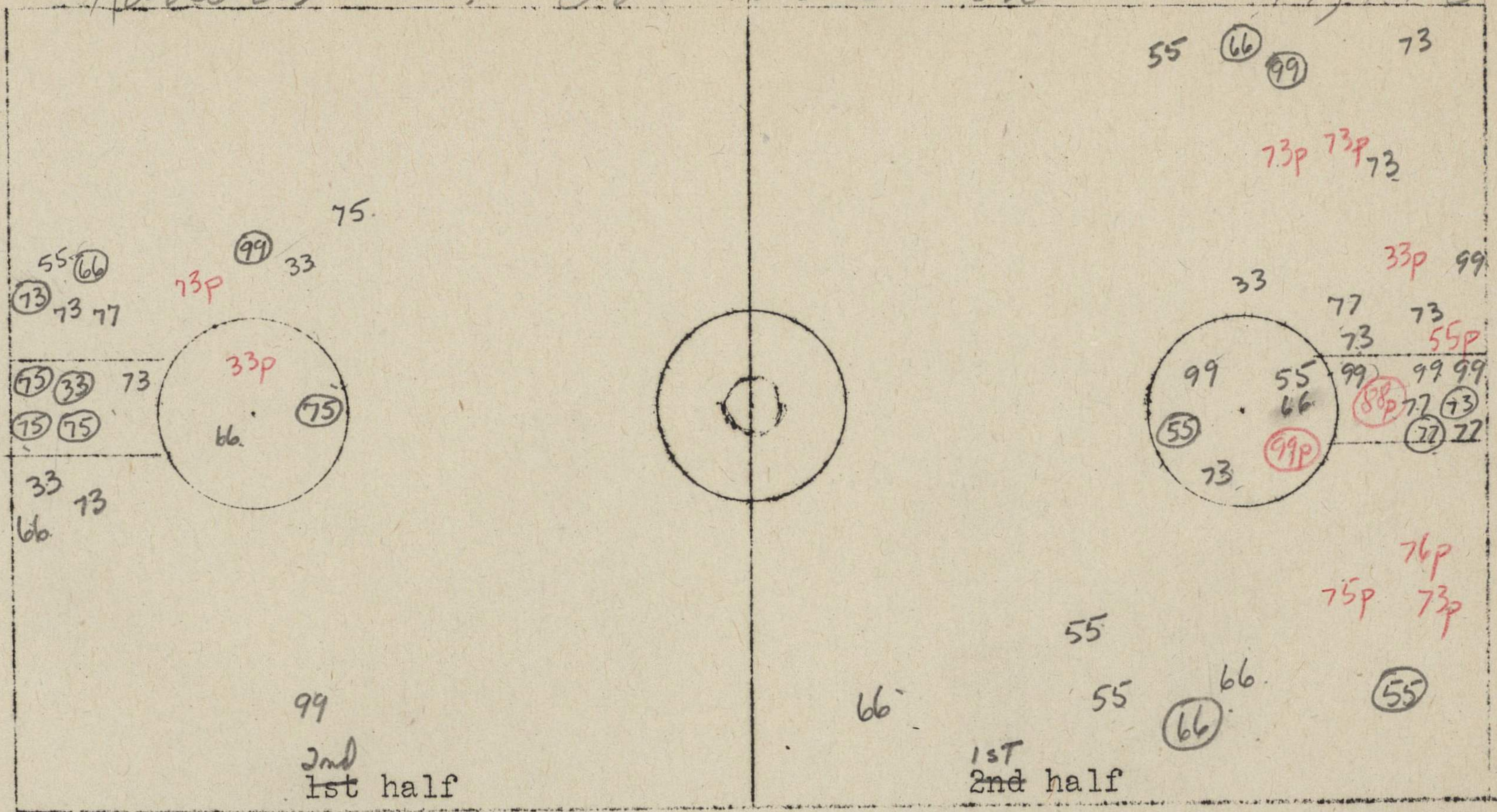


GAME Southwestern (Kans.) DATE Dec. 17, 1936

PLAYER	Minutes played 1st half	Minutes played 2nd half	Total minutes played	Field goals 1st half	Field goals missed first half	Field goals 2nd half	Field goals missed second half	Total field goals made	Total field goals missed	Direct assists	Free Throws made 1st half	Free Throws missed 1st half	Free Throws made 2nd half	Free Throws missed 2nd half	Total Free Throws made	Total Free Throws missed	Personal Fouls 1st half	Personal Fouls 2nd half	Total Personal fouls	Technical fouls
33 Gelay				0	0	1	2	1	2		0	0	0	0	0	0			2	
73 Holiday				2	5	1	2	3	7		1	0	1	0	2	0			4	
76 Corlies				0	0	0	0	0	0		0	3	0	0	0	3			1	
66 DeGrand				2	3	1	2	3	5		1	0	3	0	4	0			0	
55 Noble				2	4	0	1	2	5		2	0	0	0	2	0			1	
75 Rogers				0	0	4	1	4	1		0	0	0	0	0	0			1	
77 Wilkerson				1	3	0	1	1	4		0	0	0	0	0	0			0	
44 Lutton				0	0	0	0	0	0		0	0	0	0	0	0			0	
99 Prallo				1	5	1	1	2	6		1	0	0	0	1	0			1	
29 Schmidt				0	0	0	0	0	0		0	0	0	0	0	0			0	
88 Heidner				0	0	0	0	0	0		0	0	0	0	0	0			1	
79 Cox				0	0	0	0	0	0		0	0	0	0	0	0			0	



# Kansas vs. Southwestern Dec 17, 1936



1. Number of jump balls in center circle. 1st Half \_\_\_\_\_ Second \_\_\_\_\_ .
2. Number of jump balls in free-throw circles. 1st Half \_\_\_\_\_ 2nd \_\_\_\_\_ .
3. Number of center jumps \_\_\_\_\_ .
4. Number of fouls resulting in multiple throw \_\_\_\_\_ .
5. Number of times ball out of bounds at end of court \_\_\_\_\_ .
6. Would it have gone out if goals were set in 4 ft. \_\_\_\_\_ .
7. Would it have gone out if goals were set in 6 ft. \_\_\_\_\_ .
8. Number of times out of bounds as result of personal foul. 1st \_\_\_\_\_ 2nd \_\_\_\_\_ .
9. Number of violations of 3 second rule. \_\_\_\_\_ .
10. Number of times forced back over division line \_\_\_\_\_ .
11. Number of times failed to bring ball over division line. \_\_\_\_\_ .

Team	Kansas	
Lineup	No.	
Golay	33	
Holliday	73	
Copless	76	
Durand	66	
Noble	55	
Royers	75	
DeBellhousen	77	
Lutton	44	
Pruitt	99	
Schmidt	29	

	1st half	2nd half
Number of field goals attempted.	28	19
Successful attempts.	7	8
Number of free throws attempted.	9	7
Successful attempts.	4	5

Mark on court chart location where player attempts field goal.

Mark number of player and, if attempt is successful, draw a circle around the number. 25

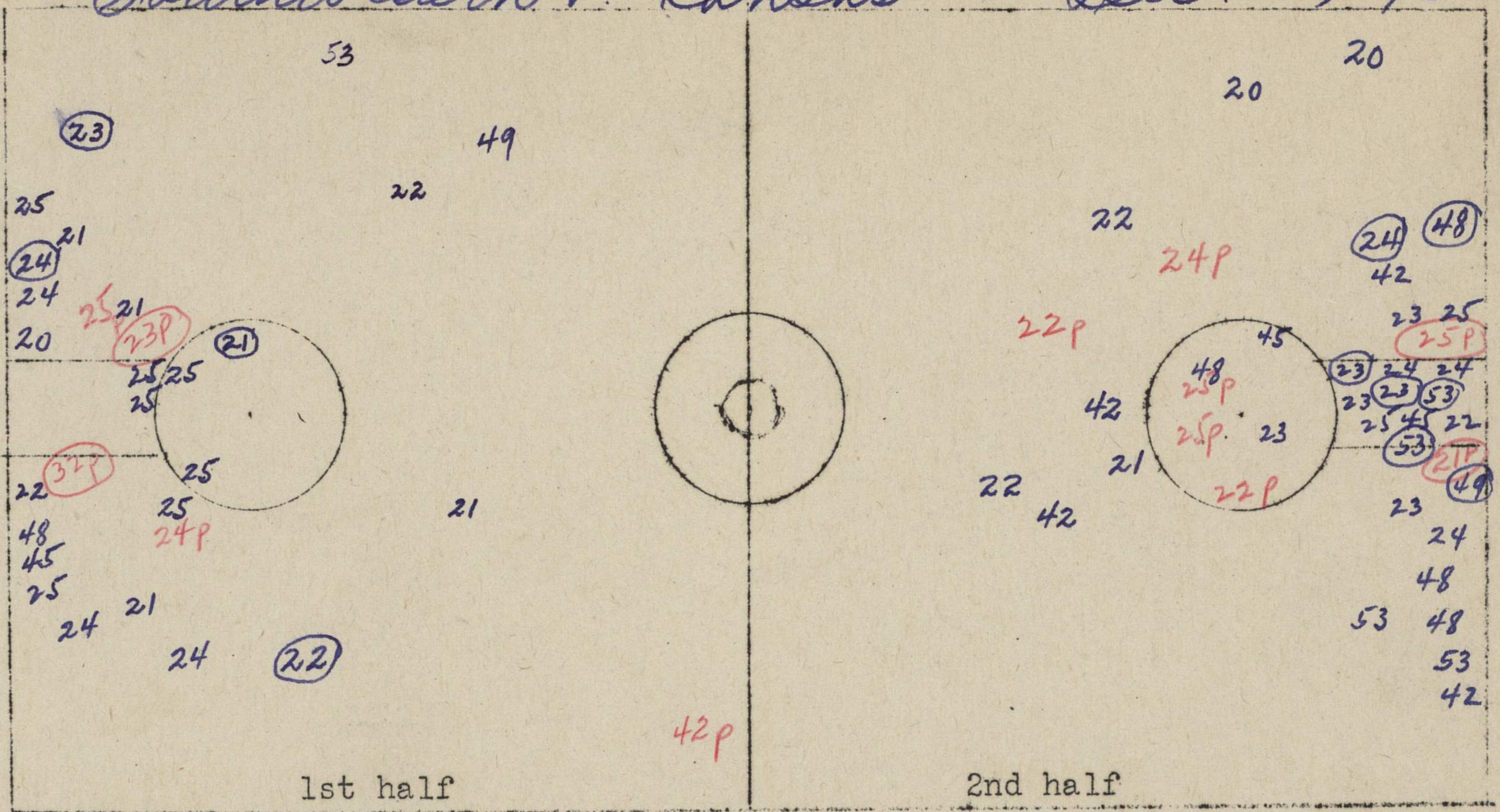
Mark location of all personal fouls by p and by the number of man making foul-22p. If resulting in multiple throw, put circle around it-22p.

St. Vidner 88  
Cox 79



# Southwestern v. Kansas

Dec. 17, 1936



1. Number of jump balls in center circle. 1st Half \_\_\_\_\_ Second \_\_\_\_\_ .
2. Number of jump balls in free-throw circles. 1st Half \_\_\_\_\_ 2nd \_\_\_\_\_ .
3. Number of center jumps \_\_\_\_\_ .
4. Number of fouls resulting in multiple throw \_\_\_\_\_ .
5. Number of times ball out of bounds at end of court \_\_\_\_\_ .
6. Would it have gone out if goals were set in 4 ft. \_\_\_\_\_ .
7. Would it have gone out if goals were set in 6 ft. \_\_\_\_\_ .
8. Number of times out of bounds as result of personal foul. 1st \_\_\_\_\_ 2nd \_\_\_\_\_ .
9. Number of violations of 3 second rule. \_\_\_\_\_ .
10. Number of times forced back over division line \_\_\_\_\_ .
11. Number of times failed to bring ball over division line. \_\_\_\_\_ .

Team	Southwestern
Lineup	No.
L. Tucker	24
M. Tucker	53
Hinshaw	20
Mac Donald	23
Trangitt	25
C. Porter	49
W. Porter	22
Forrester	48
Bratches	21
Gillespie	42

	1st half	2nd half
Number of field goals attempted.	26	35
Successful attempts.	4	7
Number of free throws attempted.	6	7
Successful attempts.	3	2

Mark on court chart location where player attempts field goal.

Mark number of player and, if attempt is successful, draw a circle around the number. 25

Mark location of all personal fouls by p and by the number of man making foul-22p. If resulting in multiple throw, put circle around it-22p.