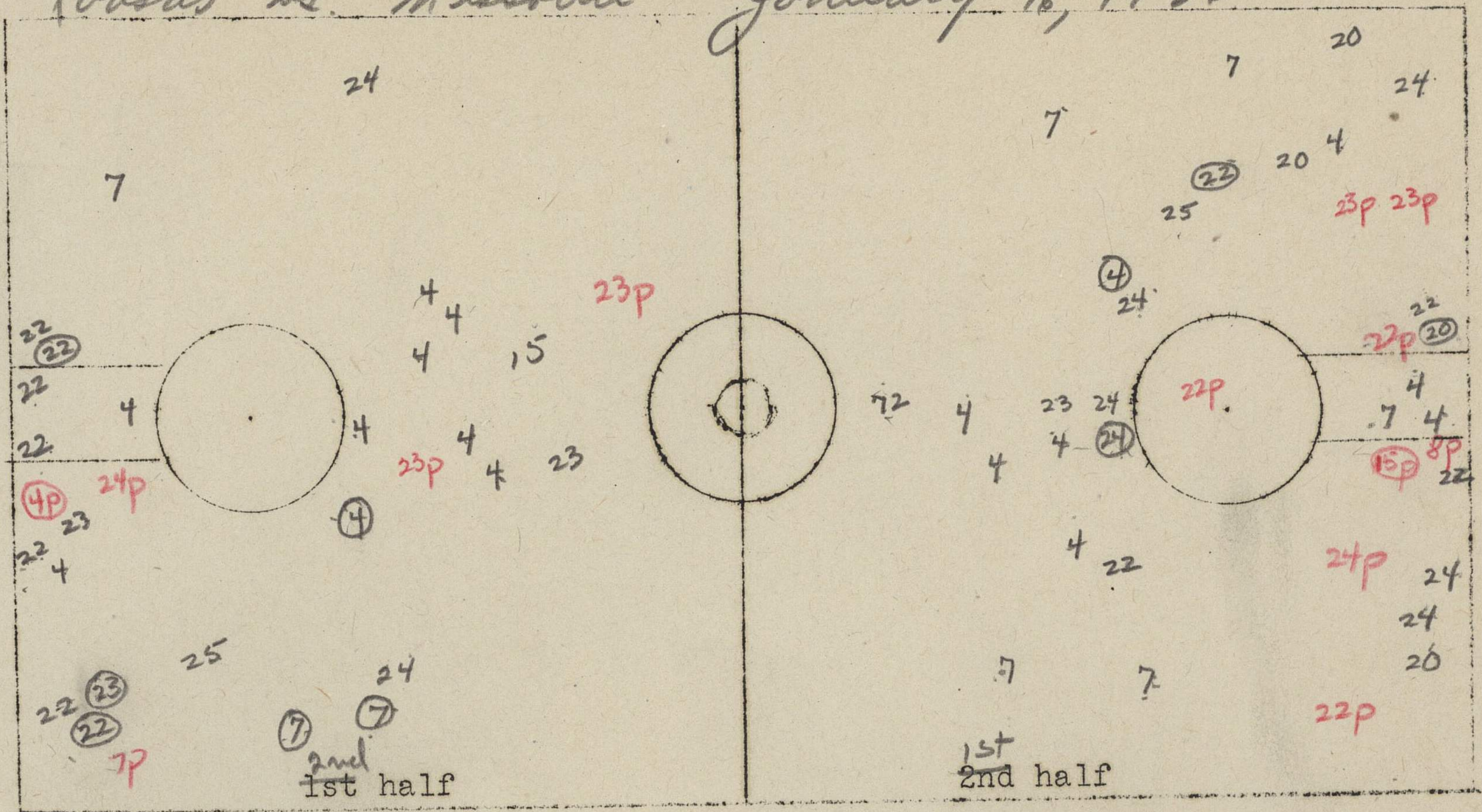


# Kansas vs. Missouri January 16, 1936



1. Number of jump balls in center circle. 1st Half \_\_\_\_\_ Second \_\_\_\_\_.
2. Number of jump balls in free-throw circles. 1st Half \_\_\_\_\_ 2nd \_\_\_\_\_.
3. Number of center jumps \_\_\_\_\_.
4. Number of fouls resulting in multiple throw \_\_\_\_\_.
5. Number of times ball out of bounds at end of court \_\_\_\_\_.
6. Would it have gone out if goals were set in 4 ft. \_\_\_\_\_.
7. Would it have gone out if goals were set in 6 ft. \_\_\_\_\_.
8. Number of times out of bounds as result of personal foul. 1st \_\_\_\_\_ 2nd \_\_\_\_\_.
9. Number of violations of 3 second rule. \_\_\_\_\_.
10. Number of times forced back over division line \_\_\_\_\_.
11. Number of times failed to bring ball over division line. \_\_\_\_\_.

Team	No.
Missouri	
Lineup	
Hatfield	8
Carroll	24
Henderson	25
Brookfield	23
Brown	22
Strom	20
Bredhoeft	7
Kearsey	15
Bier	4
Calson	9

	1st half	2nd half
Number of field goals attempted.	30	26
Successful attempts.	4	6
Number of free throws attempted.	3	9
Successful attempts.	2	5

Mark on court chart location where player attempts field goal.

Mark number of player and, if attempt is successful, draw a circle around the number. 25

Mark location of all personal fouls by p and by the number of man making foul-22p.

If resulting in multiple throw, put circle around it-22p.