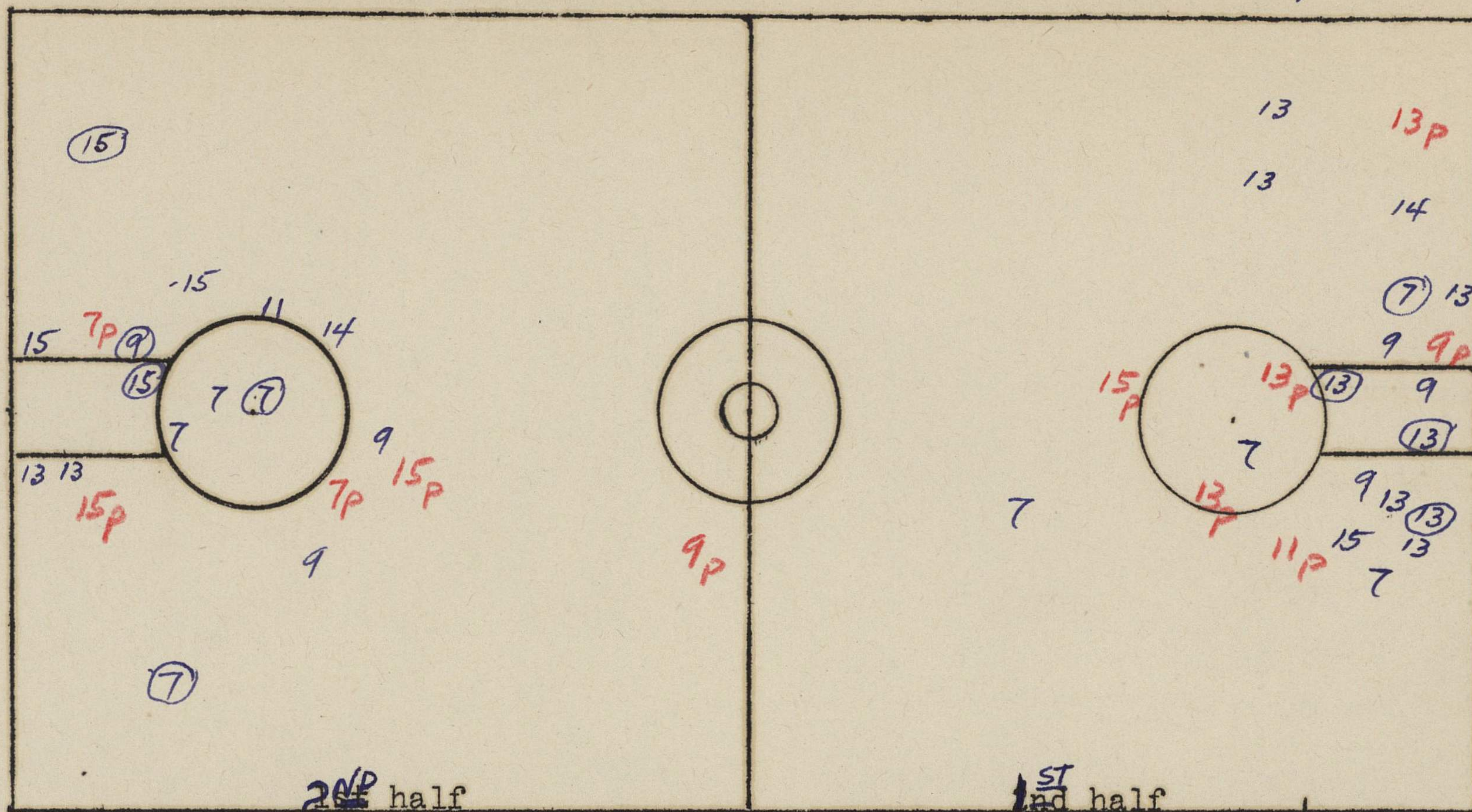


Kansas Vs Washburn

December 3, 1936



1. Number of jump balls in center circle. 1st Half _____ Second _____
2. Number of jump ball in free-throw circles. 1st Half _____ 2nd _____
3. Number of center jumps _____
4. Number of fouls resulting in multiple throw _____
5. Number of times ball out of bounds at end of court _____
6. Would it have gone out if goals were set in 4 ft. _____
7. Would it have gone out if goals were set in 6 ft. _____
8. Number of times out of bounds as result of personal foul. 1st _____ 2nd _____
9. Number of violations of 3 second rule. _____
10. Number of times forced back over division line _____
11. Number of times failed to bring ball over division line. _____

Team WASHBURN

Lineup	No.
SHULTIE	9
POLLNER	15
COLLARD	13
GILBERT	7
ROSKAM	14
SCHLICHER	11
DITTIMORE	10
MILLS	6
BROWN	17

	1st half	2nd half
Number of field goals attempted.	17	14
Successful attempts.	4	5
Number of free throws attempted.	11 (2)	11 (11)
Successful attempts.	1 (1)	11 (7)

Mark on court chart location where player attempts field goal.

Mark number of player and, if attempt is successful, draw a circle around the number. 25

Mark location of all personal fouls by p and by the number of man making foul-22p. If resulting in multiple throw, put circle around it- 22p.