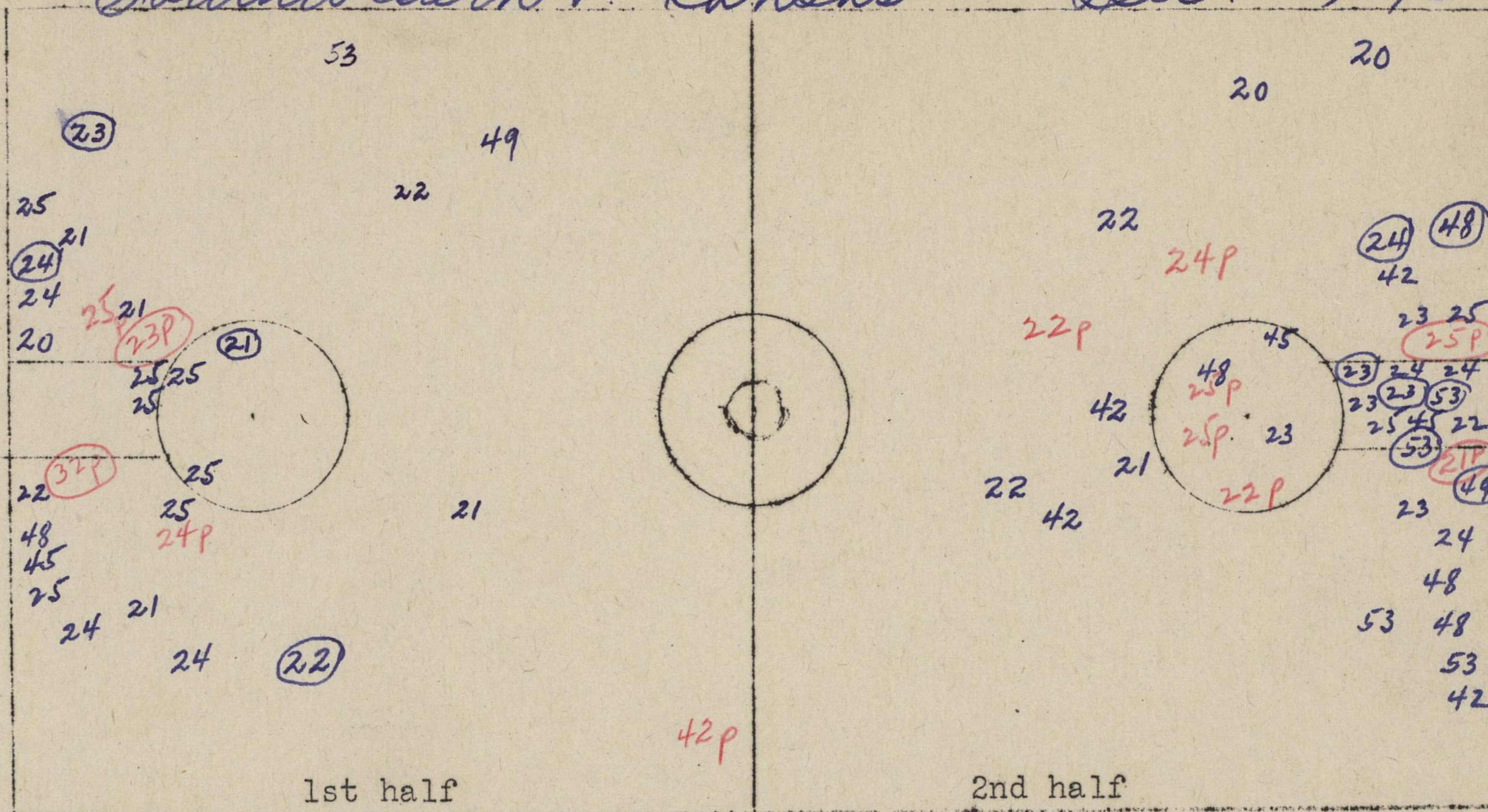


Southwestern v. Kansas

Dec. 17, 1936



1. Number of jump balls in center circle. 1st Half _____ Second _____.
2. Number of jump balls in free-throw circles. 1st Half _____ 2nd _____.
3. Number of center jumps _____.
4. Number of fouls resulting in multiple throw _____.
5. Number of times ball out of bounds at end of court _____.
6. Would it have gone out if goals were set in 4 ft. _____.
7. Would it have gone out if goals were set in 6 ft. _____.
8. Number of times out of bounds as result of personal foul. 1st _____ 2nd _____.
9. Number of violations of 3 second rule. _____.
10. Number of times forced back over division line _____.
11. Number of times failed to bring ball over division line. _____.

Team <i>Southwestern</i>	
Lineup	No.
<i>L. Tucker</i>	<i>24</i>
<i>M. Tucker</i>	<i>53</i>
<i>Hinsbury</i>	<i>20</i>
<i>Mac Donald</i>	<i>23</i>
<i>Trangitt</i>	<i>25</i>
<i>C. Porter</i>	<i>49</i>
<i>W. Porter</i>	<i>22</i>
<i>Forrester</i>	<i>48</i>
<i>Bratcher</i>	<i>21</i>
<i>Gillespie</i>	<i>42</i>

	1st half	2nd half
Number of field goals attempted.	<i>26</i>	<i>35</i>
Successful attempts.	<i>4</i>	<i>7</i>
Number of free throws attempted.	<i>6</i>	<i>7</i>
Successful attempts.	<i>3</i>	<i>2</i>

Mark on court chart location where player attempts field goal.

Mark number of player and, if attempt is successful, draw a circle around the number. 25

Mark location of all personal fouls by p and by the number of man making foul-22p. If resulting in multiple throw, put circle around it-22p.