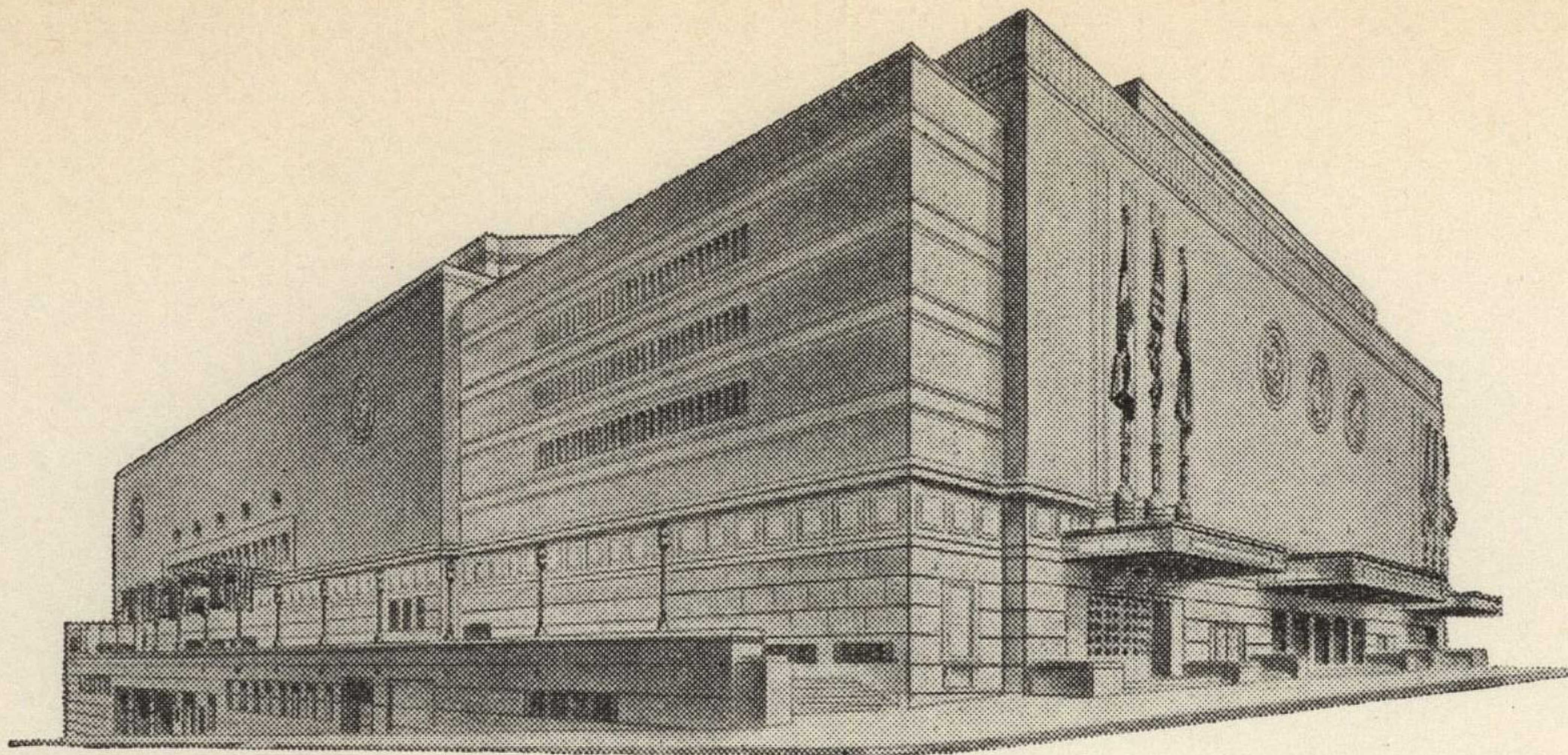


ADVISORY BOARD

FRED G. BUFFE
Chairman
JOHN C. GROVER
Vice-Chairman
H. E. BONING, JR.
Secretary
BARNEY L. ALLIS
HARRY M. GAMBREL
R. CROSBY KEMPER
FRED M. LEE
DORMAN H. O'LEARY
HARRY H. WELSH, JR.



MAIN ARENA
12,000 seating capacity
MUSIC HALL
2,572 seating capacity
LITTLE THEATRE
600 seating capacity
EXHIBITION HALL
120,000 square feet
COMMITTEE ROOMS (23)
seating capacities 25 to 500

MUNICIPAL AUDITORIUM

KANSAS CITY, MISSOURI

EUGENE C. ZACHMAN, Director
LOUIS G. LOWER, Ass't Director

December 20, 1941

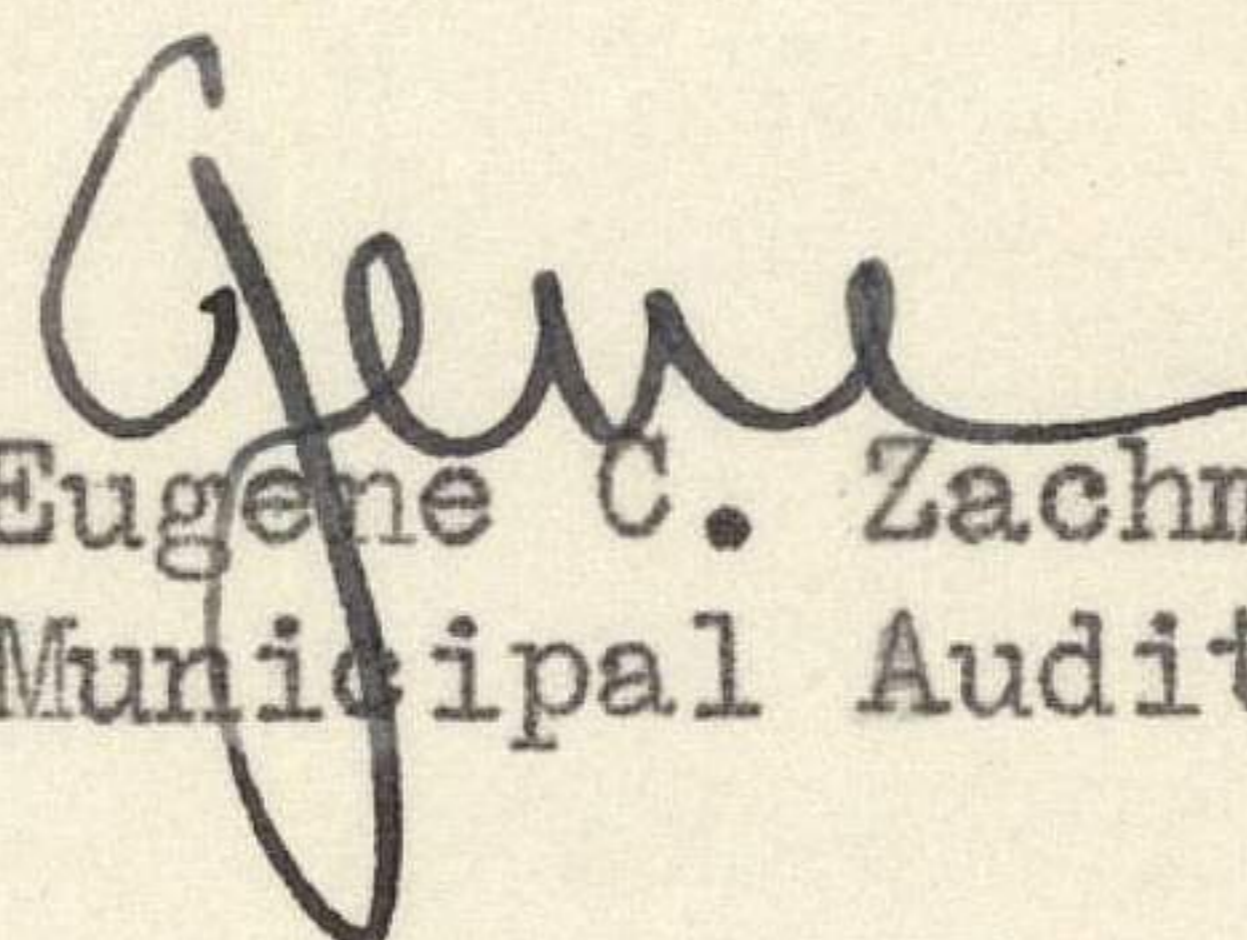
Dr. Forest C. Allen
Athletic Department
University of Kansas
Lawrence, Kansas

Dear Phog:

Enclosed is a copy of a letter in which you may be interested.

With kindest personal regards and best wishes for a Merry Christmas and a Happy New Year, I am

Sincerely yours,


Eugene C. Zachman, Director
Municipal Auditorium

ECZ/fc
Enc.

