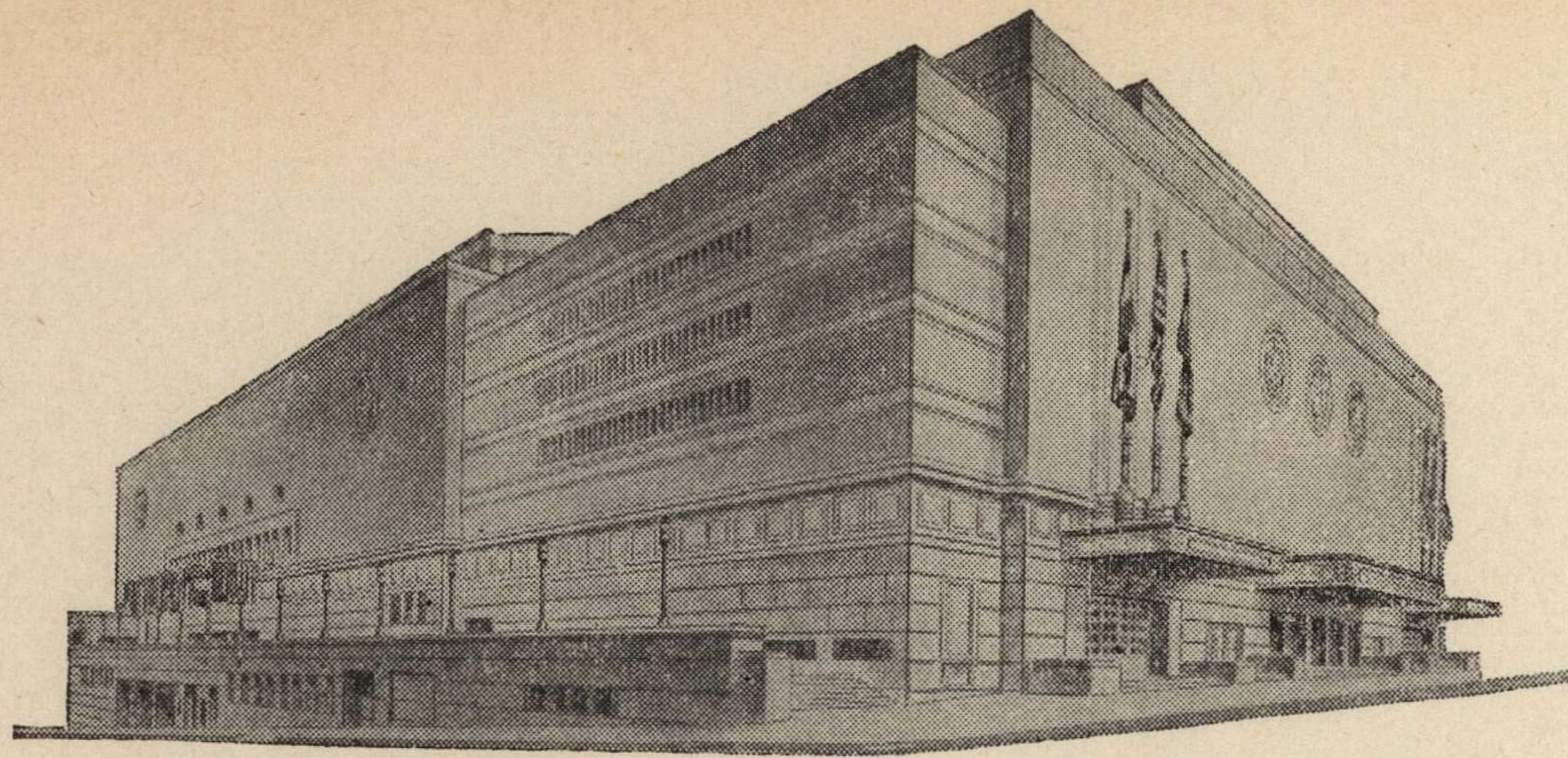


ADVISORY BOARD

FRED G. BUFFE  
Chairman  
JOHN C. GROVER  
Vice-Chairman  
H. E. BONING, JR.  
Secretary  
BARNEY L. ALLIS  
HARRY M. GAMBREL  
R. CROSBY KEMPER  
FRED M. LEE  
DORMAN H. O'LEARY  
HARRY H. WELSH, JR.



MAIN ARENA  
12,000 seating capacity  
MUSIC HALL  
2,572 seating capacity  
LITTLE THEATRE  
600 seating capacity  
EXHIBITION HALL  
120,000 square feet  
COMMITTEE ROOMS (23)  
seating capacities 25 to 500

# MUNICIPAL AUDITORIUM

KANSAS CITY, MISSOURI

LOUIS G. LOWER, Director  
C. B. HOFF, Ass't Director

December 1, 1943.

Dr. Forrest C. Allen  
University of Kansas  
Lawrence, Kansas

Dear Phog:

I am pleased that you still intend to use the date of February 5th, 1944 for a game between your team and some other team in the immediate territory.

I am holding this date for you as well as the evenings of December 28th, 29th, and 30th, 1943. I had no intention of hurrying you on this matter as I have had no one asking for these particular dates, so I will be glad to hold them until I hear from you again.

Sincerely yours,

*Clarence*  
Clarence B. Hoff,  
Director.

CBH:EH

