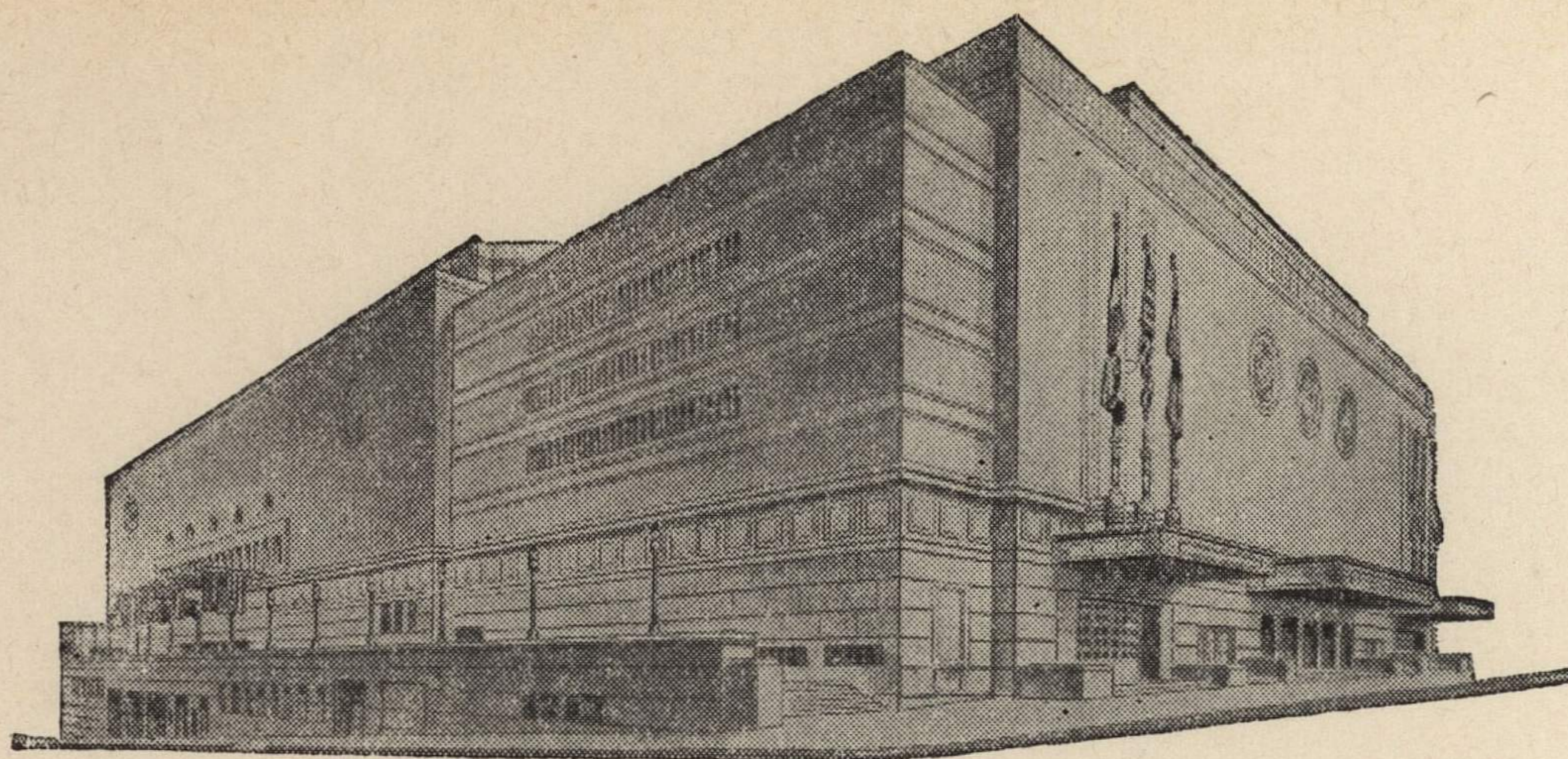


ADVISORY BOARD
JOHN C. GROVER
Chairman
FRED M. LEE
Vice-Chairman
H. E. BONING, JR.
Secretary
BARNEY L. ALLIS
HARRY M. GAMBREL
R. CROSBY KEMPER
DORMAN H. O'LEARY
HARRY H. WELSH, JR.
MARTHA FRANKLIN



MAIN ARENA
12,000 seating capacity
MUSIC HALL
2,572 seating capacity
LITTLE THEATRE
600 seating capacity
COMMITTEE ROOMS (19)
seating capacities 25 to 75

MUNICIPAL AUDITORIUM KANSAS CITY, MISSOURI

LOUIS G. LOWER, Director
C. B. HOFF, Ass't Director — JAS. H. NIXON, Treasurer

December 16, 1943

Dr. F. C. Allen,
Director of Physical Education,
Kansas University,
Lawrence, Kansas.

Dear Dr. Allen:

Enclosed are the contracts for the rental of the
Arena December 29 - 30, 1943, for your basketball
games.

Please sign the contracts and return the original
copy to this office at your convenience.

If we can be of any further assistance, please advise.

Sincerely yours,

Herschell C. Weiss
Herschell C. Weiss
Booking Clerk.

