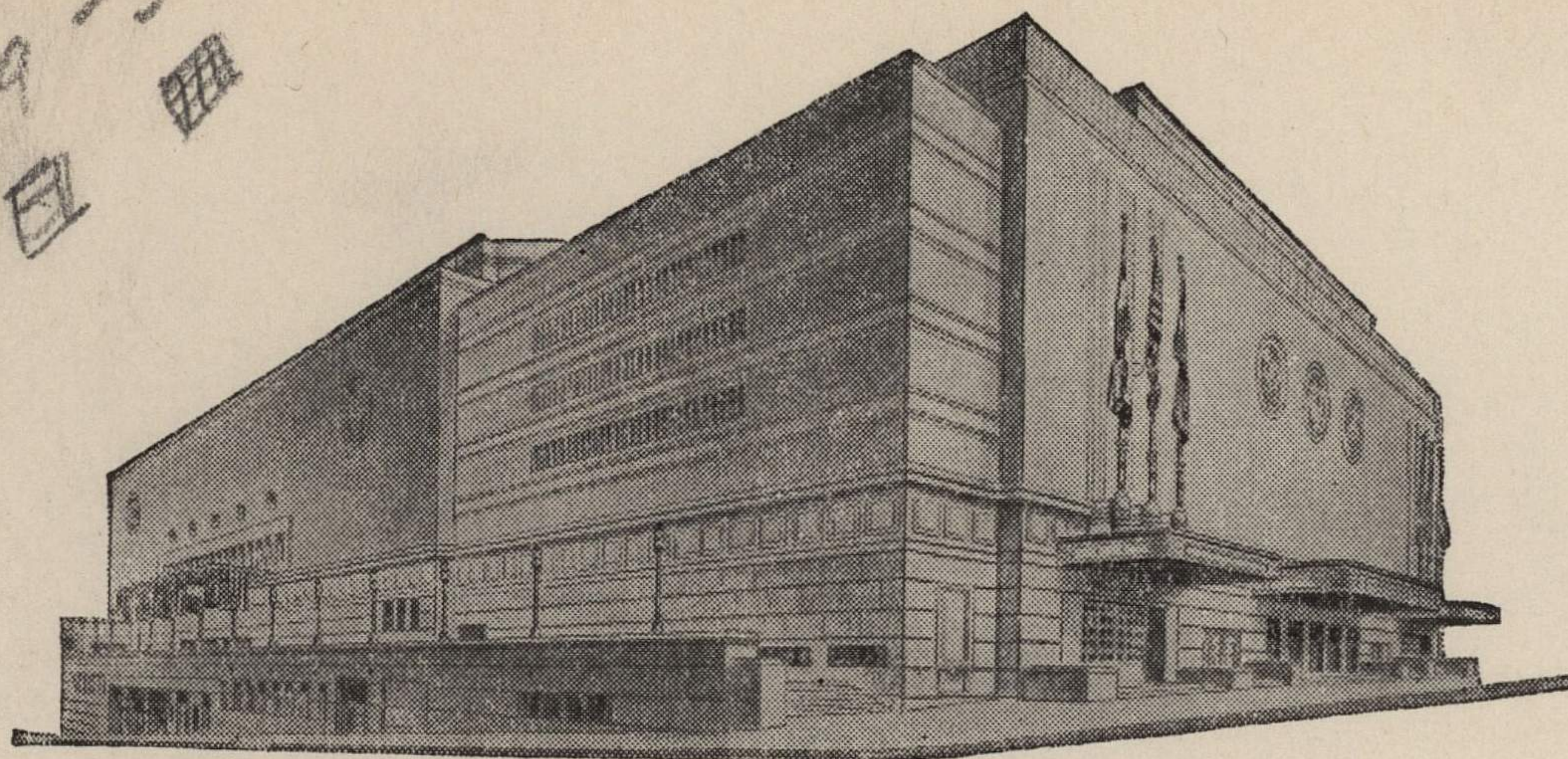


ADVISORY BOARD
JOHN C. GROVER
Chairman
FRED M. LEE
Vice-Chairman
H. E. BONING, JR.
Secretary
BARNEY L. ALLIS
HARRY M. GAMBREL
R. CROSBY KEMPER
DORMAN H. O'LEARY
HARRY H. WELSH, JR.
MARTHA FRANKLIN

28-29-30
[Handwritten marks]



MAIN ARENA
12,000 seating capacity
MUSIC HALL
2,572 seating capacity
LITTLE THEATRE
600 seating capacity
COMMITTEE ROOMS (19)
seating capacities 25 to 75

MUNICIPAL AUDITORIUM

KANSAS CITY, MISSOURI

LOUIS G. LOWER, Director
C. B. HOFF, Ass't Director — JAS. H. NIXON, Treasurer

December 13, 1943.

Dr. Forrest C. Allen
University of Kansas
Lawrence, Kansas

Dear Phog:

I have not had an opportunity to check up on all of the high school collections, but from the receipts that have come in so far, I believe that we will run ~~well~~ over \$750.00

As soon as the few remaining collections are checked in, I will send you the statement along with the check.

Sincerely yours,

Clyde M. Baker
Clyde M. Baker,
Box Office Supervisor.

CMB:EH

