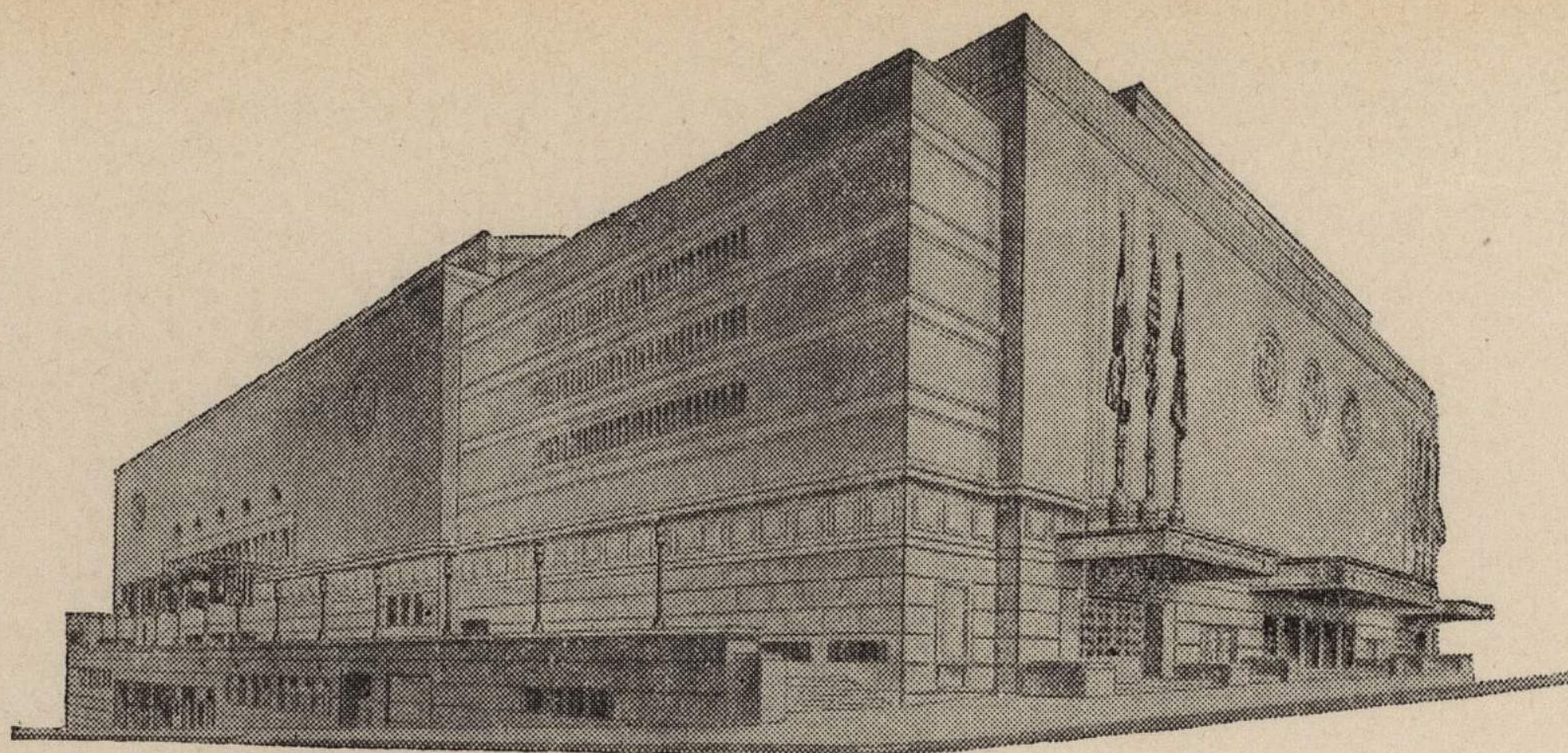


ADVISORY BOARD

FRED G. BUFFE
Chairman
JOHN C. GROVER
Vice-Chairman
H. E. BONING, JR.
Secretary
BARNEY L. ALLIS
HARRY M. GAMBREL
R. CROSBY KEMPER
FRED M. LEE
DORMAN H. O'LEARY
HARRY H. WELSH, JR.



MAIN ARENA
12,000 seating capacity
MUSIC HALL
2,572 seating capacity
LITTLE THEATRE
600 seating capacity
EXHIBITION HALL
120,000 square feet
COMMITTEE ROOMS (23)
seating capacities 25 to 500

MUNICIPAL AUDITORIUM

KANSAS CITY, MISSOURI

LOUIS G. LOWER, Director
C. B. HOFF, Ass't Director

December 15, 1943.

Dr. Forrest C. Allen
University of Kansas
Lawrence, Kansas

Dear Phog:

I believe that we had three very successful basketball games in the Arena last Saturday evening and had a very nice attendance by invitating the various high school youngsters to attend these games.

The receipts for the evening ran a little over \$750.00 gross and the Auditorium received \$153.29 as our portion for the rent. Against this rental, we had to pay for the tickets, \$23.70; ushers, \$25.00 and over-time service of our help to clean up after the game, \$108.00 or a total of \$156.70, before any of the regular expense of operations of the building was considered. I have no regrets, whatever, regarding this, but I would like to suggest that we use someother percentage figures in planning the future rental of the building. On most events of the amateur type, we charge \$250.00 guarantee, plus a percentage of receipts. I would like to suggest that hereafter we do not set a guarantee on the rent but rather that the Auditorium receive fifty percent of the first \$500.00 of the box office receipts and ten percent of all receipts above this figure. In other words, we would be more assured of getting the rental on the Arena which is in line with our standard rate, and on any large events in which the box office "take" was over \$2,000.00, you and the other schools participating would receive a full ninety percent instead of 80% on the present basis.

If you will recall, you mentioned that you were not here to make money, and we are not trying to receive more than our fair rental, so I believe that you will agree with me that the suggestion above is reasonable in every respect and I would like to use this rate on all future games held in the Arena.

Yours sincerely,

Clarence
Clarence B. Hoff,
Director.

