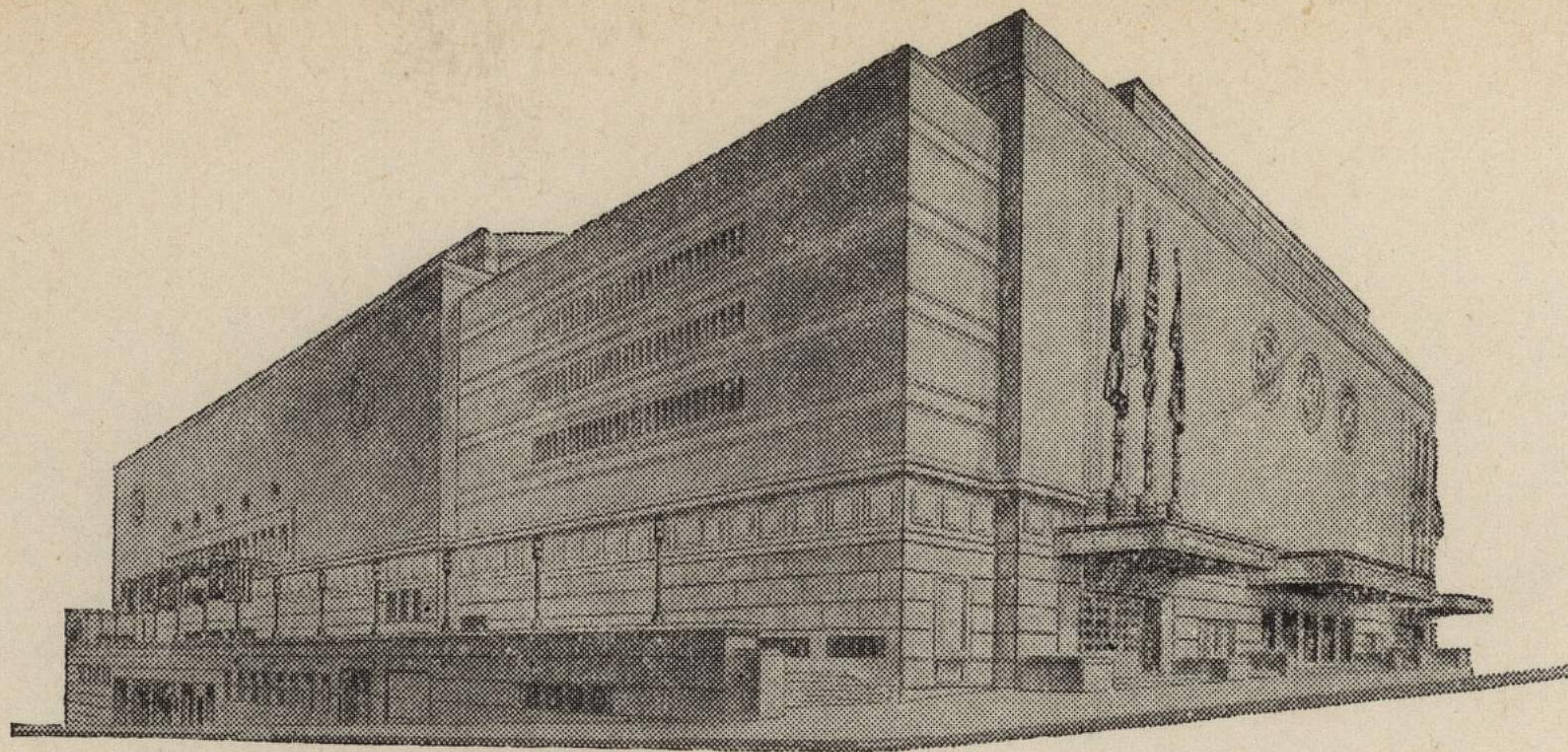


ADVISORY BOARD
FRED G. BUFFE
Chairman
JOHN C. GROVER
Vice-Chairman
H. E. BONING, JR.
Secretary
BARNEY L. ALLIS
HARRY M. GAMBREL
R. CROSBY KEMPER
FRED M. LEE
DORMAN H. O'LEARY
HARRY H. WELSH, JR.



MAIN ARENA
12,000 seating capacity
MUSIC HALL
2,572 seating capacity
LITTLE THEATRE
600 seating capacity
EXHIBITION HALL
120,000 square feet
COMMITTEE ROOMS (23)
seating capacities 25 to 500

MUNICIPAL AUDITORIUM

KANSAS CITY, MISSOURI

LOUIS G. LOWER, Director
C. B. HOFF, Ass't Director

November 23, 1943

Dr. F. C. Allen,
Director of Athletics,
University of Kansas,
Lawrence, Kansas.

Dear Dr. Allen:

Enclosed are the contracts for the rental of the Arena Saturday December 11, 1943, for your basketball game, K. U. vs Rockhurst.

Please sign the contracts and return the original copy to this office at your earliest convenience.

If we can be of any further assistance, please advise.

Sincerely yours,

Herschell C. Weiss
Herschell C. Weiss,
Booking Clerk.

