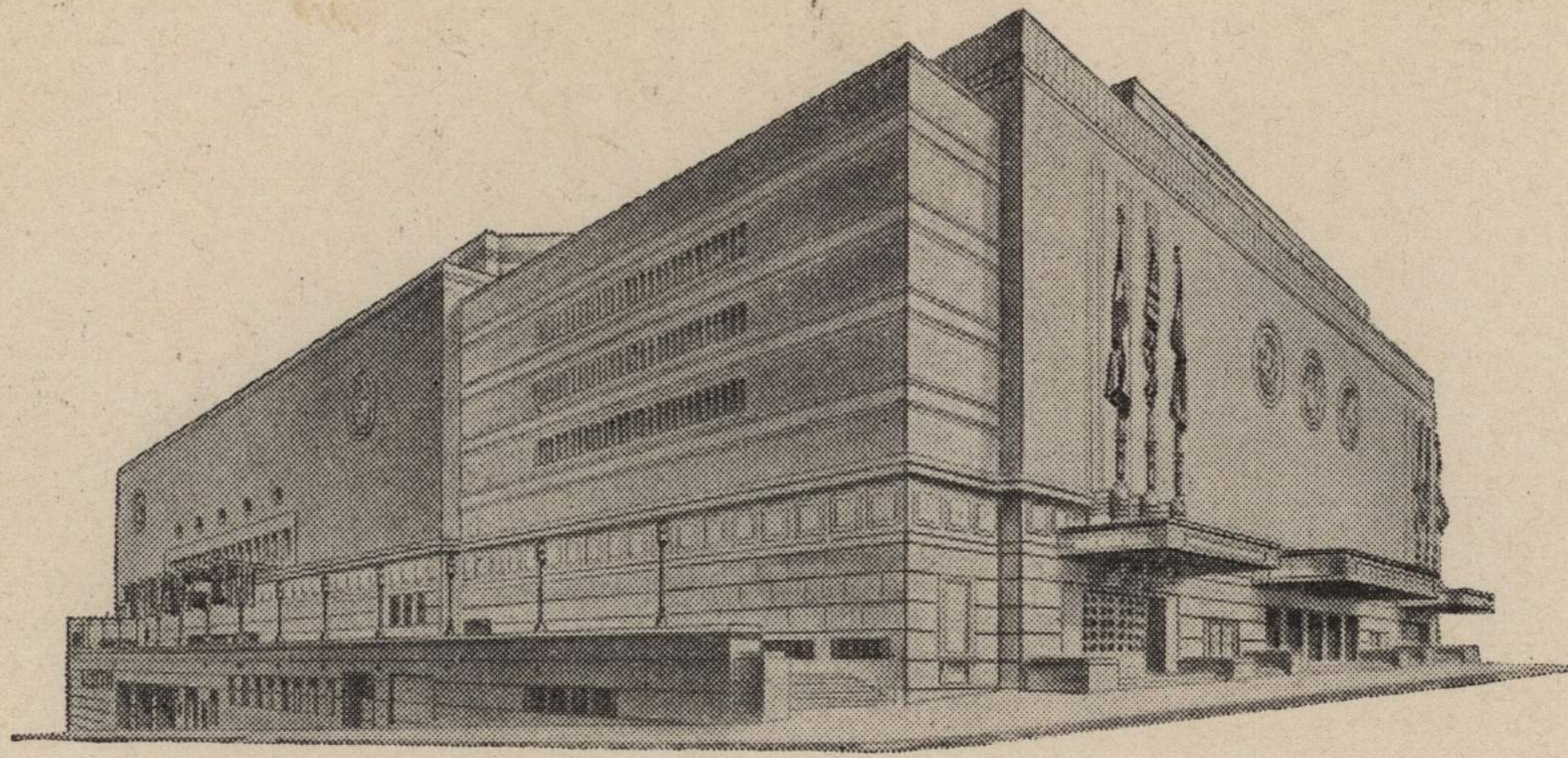


ADVISORY BOARD
FRED G. BUFFE
Chairman
JOHN C. GROVER
Vice-Chairman
H. E. BONING, JR.
Secretary
BARNEY L. ALLIS
HARRY M. GAMBREL
R. CROSBY KEMPER
FRED M. LEE
DORMAN H. O'LEARY
HARRY H. WELSH, JR.



MAIN ARENA
12,000 seating capacity
MUSIC HALL
2,572 seating capacity
LITTLE THEATRE
600 seating capacity
EXHIBITION HALL
120,000 square feet
COMMITTEE ROOMS (23)
seating capacities 25 to 500

MUNICIPAL AUDITORIUM KANSAS CITY, MISSOURI

EUGENE C. ZACHMAN, Director
LOUIS G. LOWER, Ass't Director

June 30, 1942.

Dr. Forrest C. Allen
Director of Physical Education
University of Kansas
Lawrence, Kansas

Dear Dr. Allen:

In going over the 1943 contracts I came across your contract with the Bldg. for January 29th, Dr. Allen, this contract is dated January 29, 1942 and of course this contract should read January 29, 1943. Please change your contract to read 1943.

Trusting that you will overlook this small mistake and that you will correct your contract. Thanking you,

I am respectfully,

Marven Roseman
Booking Clerk.

