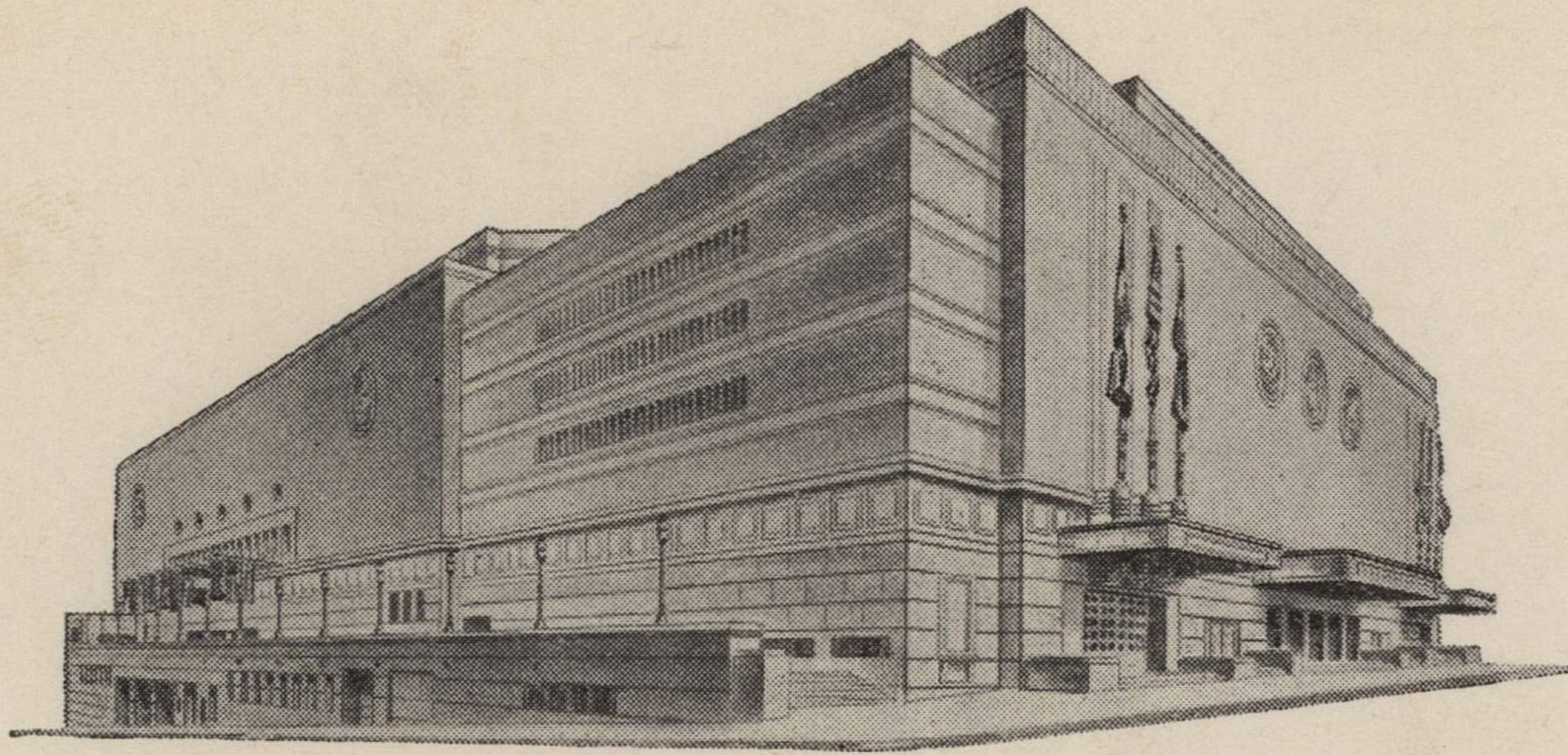


ADVISORY BOARD
FRED G. BUFFE
Chairman
JOHN C. GROVER
Vice-Chairman
H. E. BONING, JR.
Secretary
BARNEY L. ALLIS
HARRY M. GAMBREL
R. CROSBY KEMPER
FRED M. LEE
DORMAN H. O'LEARY
HARRY H. WELSH, JR.



MAIN ARENA
12,000 seating capacity
MUSIC HALL
2,572 seating capacity
LITTLE THEATRE
600 seating capacity
EXHIBITION HALL
120,000 square feet
COMMITTEE ROOMS (23)
seating capacities 25 to 500

MUNICIPAL AUDITORIUM

KANSAS CITY, MISSOURI

EUGENE C. ZACHMAN, Director
LOUIS G. LOWER, Ass't Director

June 22, 1942.

Dr. Forrest C. Allen,
Director of Physical Education,
University of Kansas
Lawrence, Kansas

Dear Dr. Allen:

I am enclosing the contracts for the use of the Arena for your engagement with the Naval Aviation Pre-Flight School of Iowa City on January 29, 1942.

As you have done in the past, please sign the original contract and return it to the Municipal Auditorium at your convenience.

Hoping that the games will again be the success that they have in the past and thanking you.

Respectfully,

Marwen Rossmann
Booking Clerk.

