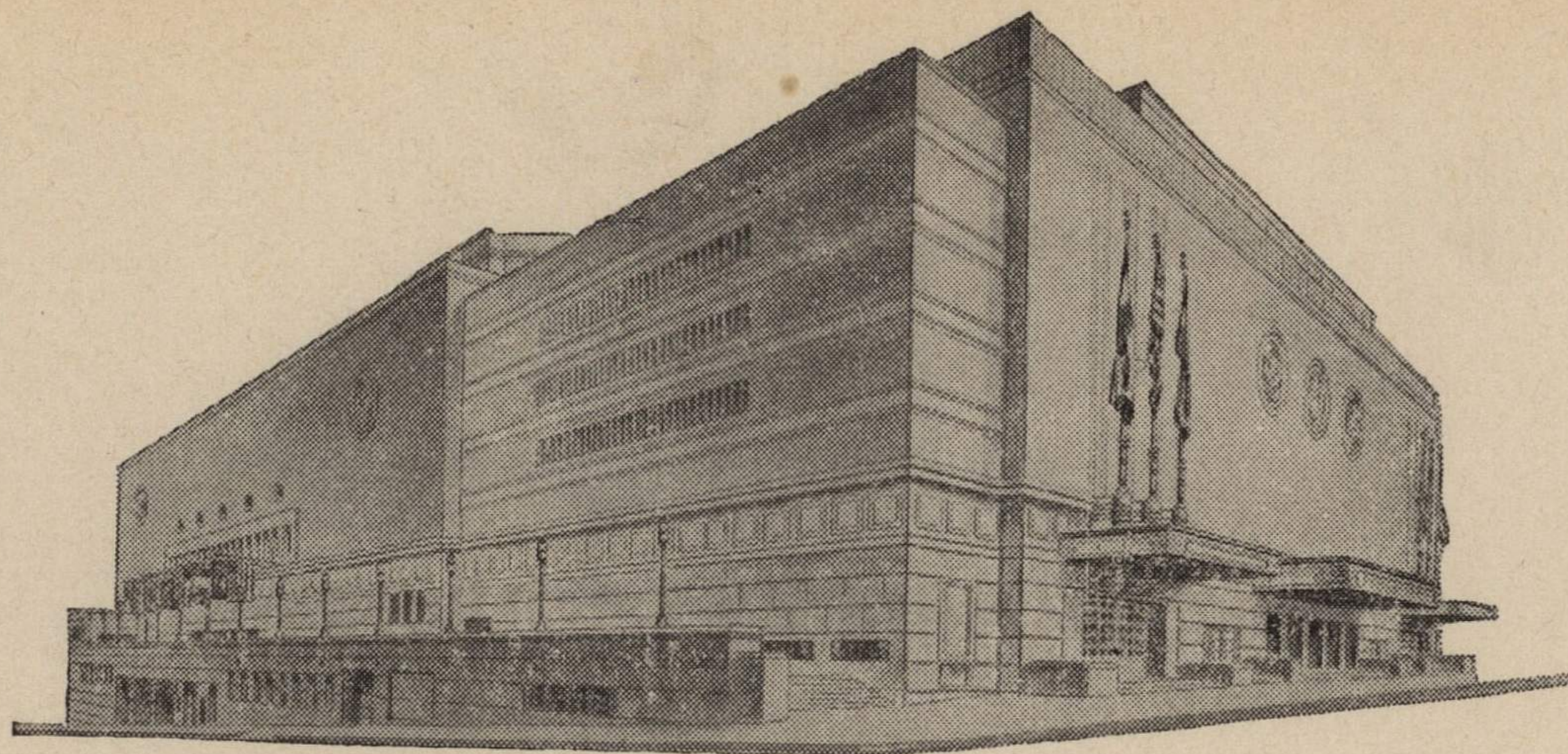


ADVISORY BOARD

FRED G. BUFFE
Chairman
JOHN C. GROVER
Vice-Chairman
H. E. BONING, JR.
Secretary
BARNEY L. ALLIS
HARRY M. GAMBREL
R. CROSBY KEMPER
FRED M. LEE
DORMAN H. O'LEARY
HARRY H. WELSH, JR.



MAIN ARENA
12,000 seating capacity
MUSIC HALL
2,572 seating capacity
LITTLE THEATRE
600 seating capacity
EXHIBITION HALL
120,000 square feet
COMMITTEE ROOMS (23)
seating capacities 25 to 500

MUNICIPAL AUDITORIUM

KANSAS CITY, MISSOURI

LOUIS G. LOWER, Director
C. B. HOFF, Ass't Director

June 4, 1942.

Dr. Forrest C. Allen
University of Kansas
Lawrence, Kansas

Dear "Phog":

This will acknowledge your letter of May 25 regarding the contract for the date of January 30, 1943. In accordance with your request, we are holding January 29 until more definite information is received from you.

With kindest personal regards, I am

Sincerely yours,

Louis G. Lower, Director

LGL:EH

