

ADVISORY BOARD

FRED G. BUFFE  
Chairman

JOHN C. GROVER  
Vice-Chairman

H. E. BONING, JR.  
Secretary

BARNEY L. ALLIS

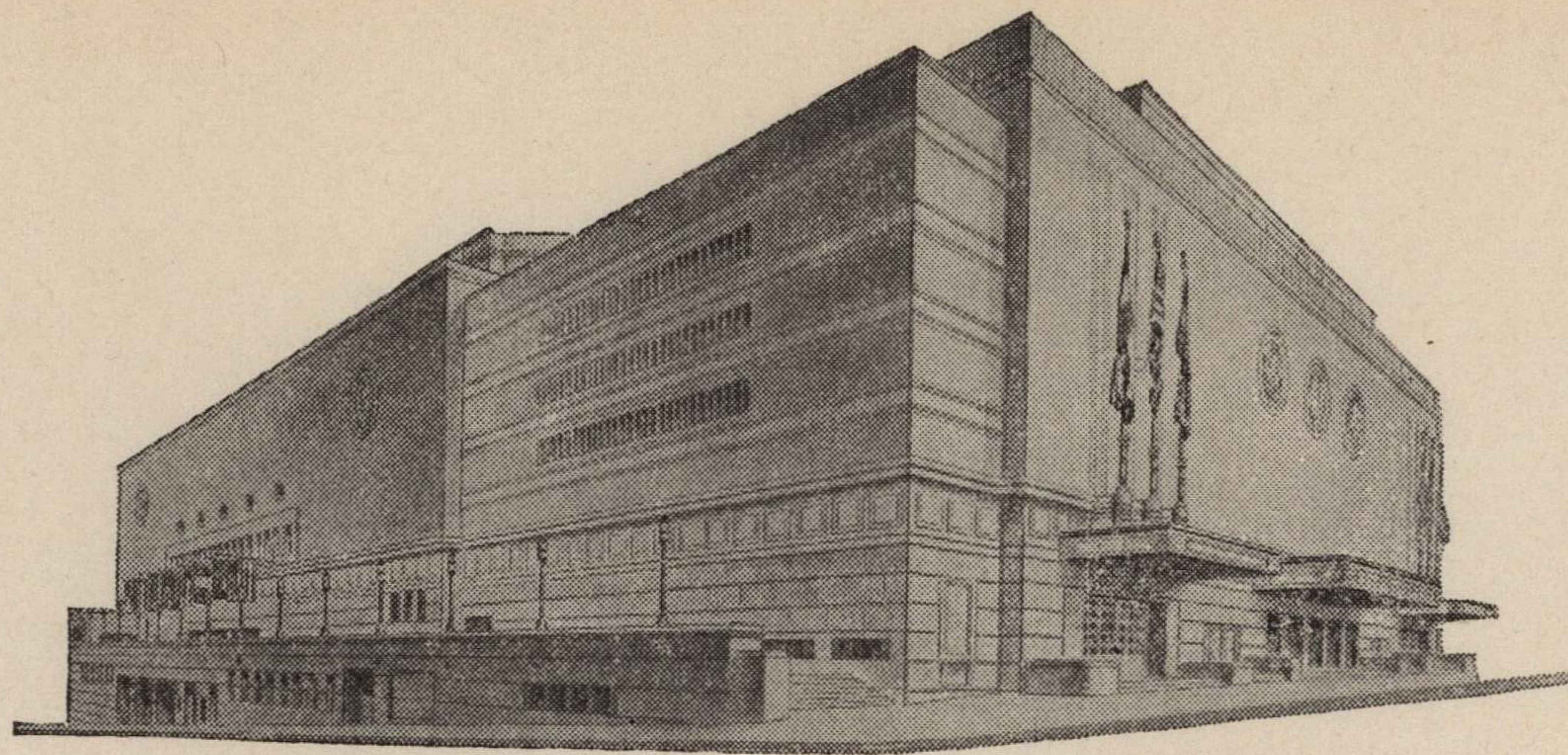
HARRY M. GAMBREL

R. CROSBY KEMPER

FRED M. LEE

DORMAN H. O'LEARY

HARRY H. WELSH, JR.



MAIN ARENA

12,000 seating capacity

MUSIC HALL

2,572 seating capacity

LITTLE THEATRE

600 seating capacity

EXHIBITION HALL

120,000 square feet

COMMITTEE ROOMS (23)

seating capacities 25 to 500

# MUNICIPAL AUDITORIUM

KANSAS CITY, MISSOURI

LOUIS G. LOWER, Director

C. B. HOFF, Ass't Director

November 21, 1942.

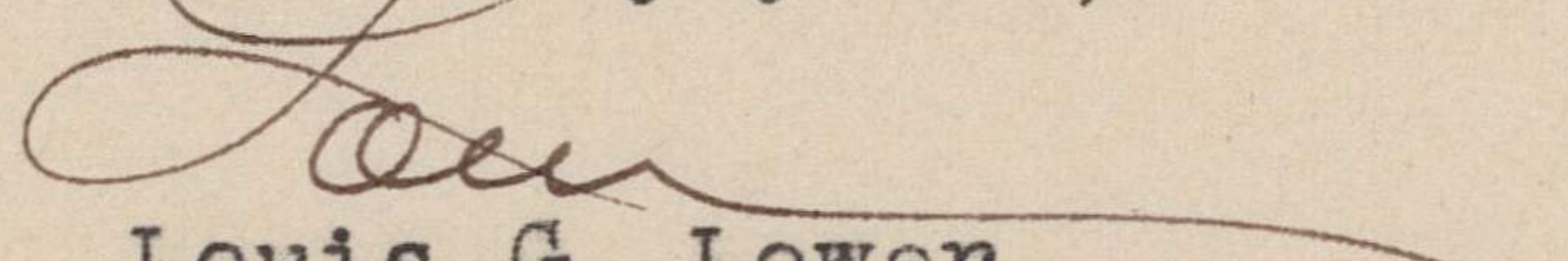
Dr. Forrest C. Allen  
University of Kansas  
Lawrence, Kansas

Dear "Phog":

There will have to be a change in the preliminary game, December 5th for numerous reasons, all of which have to do with not only the first game the Navy team plays here but extends to all of their games.

It will be necessary to have as a part of the double header between your team and the Navy "Clippers", "Schooley's" and "St. Benedicts". Jack Gardner feels that this is extremely necessary due to the fact that it ties in with the plans for their eight games scheduled here.

Sincerely yours,

  
Louis G. Lower,  
Director.

LGL:EH

