

ADVISORY BOARD

FRED G. BUFFE  
Chairman

JOHN C. GROVER  
Vice-Chairman

H. E. BONING, JR.  
Secretary

BARNEY L. ALLIS

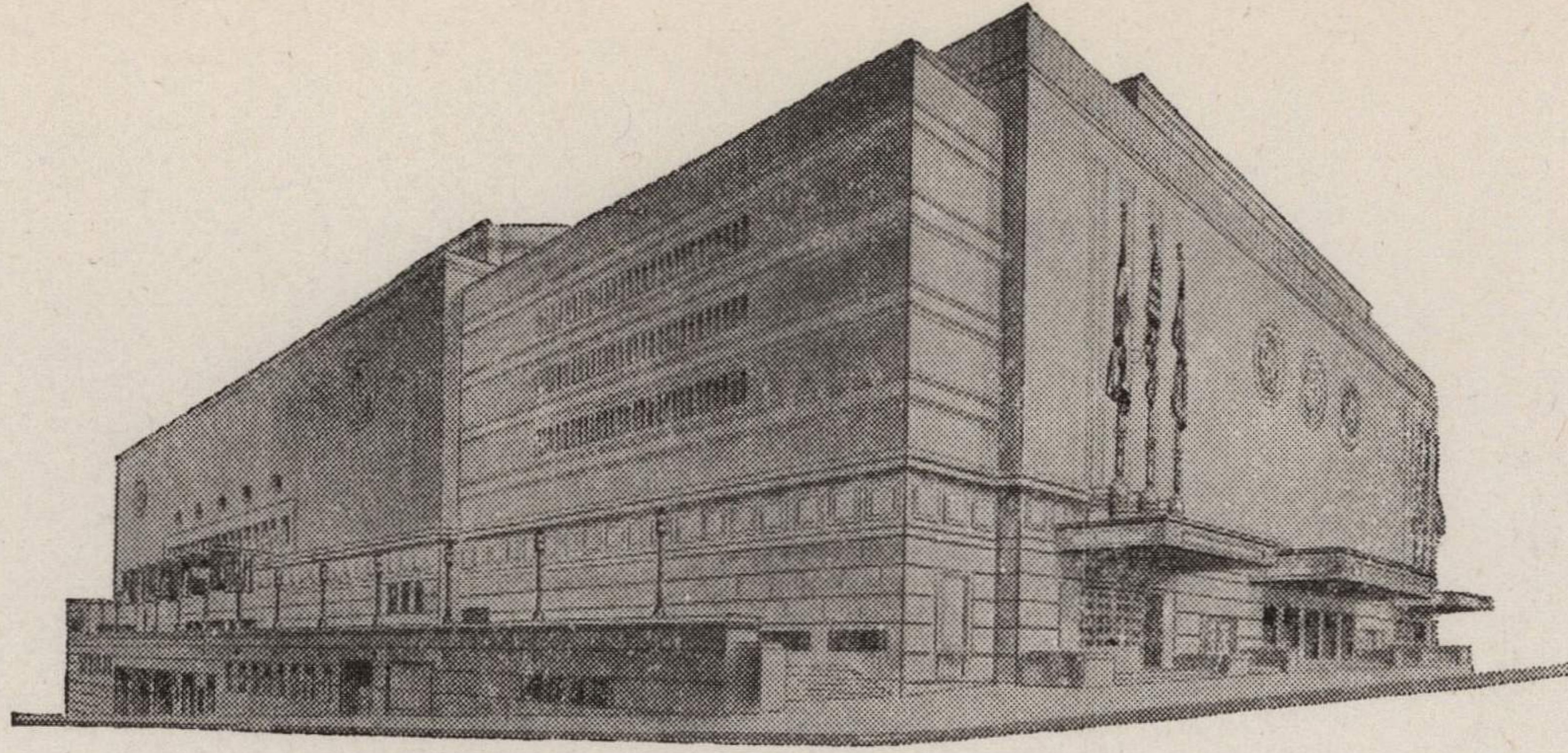
HARRY M. GAMBREL

R. CROSBY KEMPER

FRED M. LEE

DORMAN H. O'LEARY

HARRY H. WELSH, JR.



MAIN ARENA

12,000 seating capacity

MUSIC HALL

2,572 seating capacity

LITTLE THEATRE

600 seating capacity

EXHIBITION HALL

120,000 square feet

COMMITTEE ROOMS (23)

seating capacities 25 to 500

# MUNICIPAL AUDITORIUM

KANSAS CITY, MISSOURI

LOUIS G. LOWER, Director

C. B. HOFF, Ass't Director

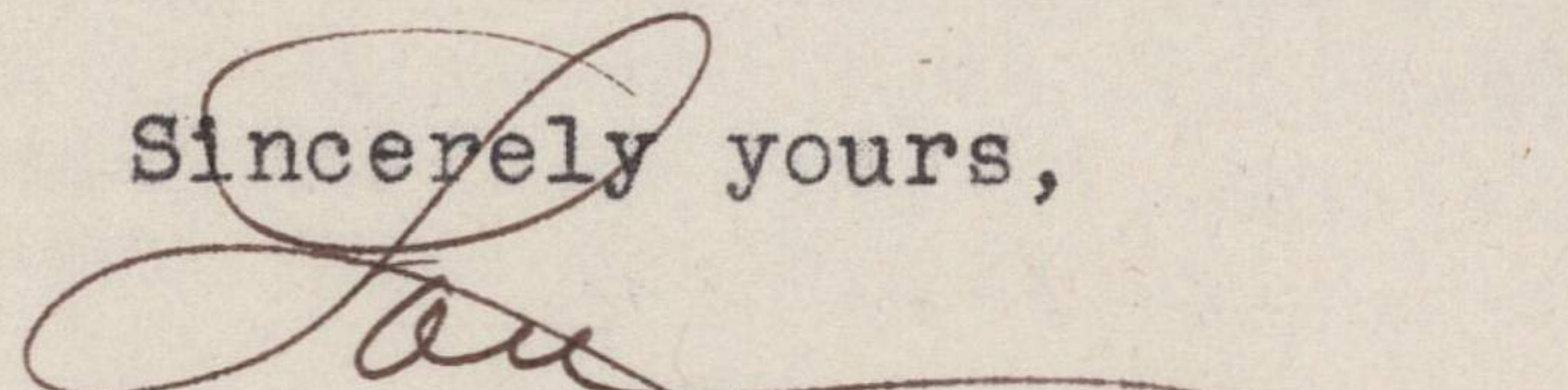
November 21, 1942.

Dr. Forrest C. Allen  
University of Kansas  
Lawrence, Kansas

Dear Phog:

Enclosed you will find a copy of my letter to George Edwards which is self-explanatory. Hatch Welsh was in the office when I talked to Mr. Edwards and he assured me that there would be no hitch in these arrangements being approved by the Athletic Department. I am sure you can definitely count on their approval. I have notified Jack Gardner today.

Sincerely yours,



Louis G. Lower, Director

LGL:EH

Enc: letter

