

The Atchison, Topeka and Santa Fe Railway System



Dr F.C.Allen,

From Lawrence

To New York & return

ITINERARY OF YOUR TRIP

This schedule is based on current time tables, which are subject to change without notice

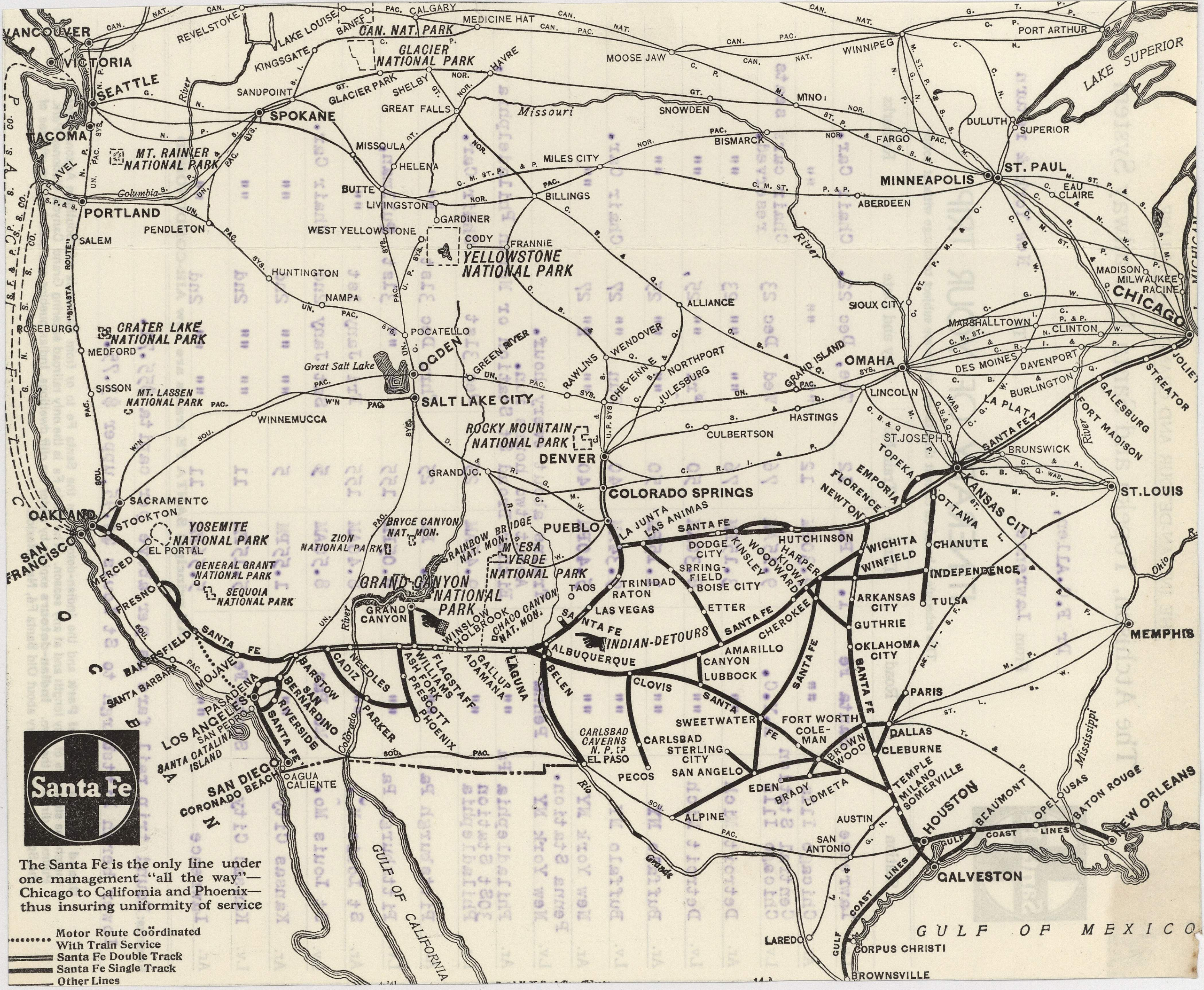
Station	Road	Time	Train No.	Day and Date	Remarks	
Lv. Lawrence	Santa Fe	1. PM	12	Tue, Dec 22.	Chair Car.	
Ar. Chicago Ills	"	9.30PM	12	" "	"	
Lv. Chicago Ills	Central Station N.Y.C.	9.15AM	76	Wed Dec 23	Chair cars seats reserved.	
Ar. Detroit Mich	"	3.15PM	76	" " 23	"	
Lv. Detroit Mich	"	8.30AM	50	Fri " 25,	"	
Ar. Buffalo NY	"	1.15PM	50	" " 25	"	
Lv. Buffalo NY	"	9.34AM	40	Sun " 27	Chair Car.	
Ar. New York NY	"	5.40PM	40	" 2" 27	"	
Lv. New York NY	Penna	Trains about every hour. About two hours run.				
Ar. Philadelphia Pa	"	Either Broad St Station or North Philadelphia,				
Lv. Philadelphia	"	9.45AM	25	Dec 31st	Chair Car.	
Ar. Pittsburgh Pa	"	5. PM	25	Thru Dec 31st	"	
Lv. Pittsburgh Pa	"	6.05PM	155	" " 31st	Pullman,	
Ar. St Louis Mo.	"	8.40AM	155	Fri Jany 1st	"	
Lv. St Louis Mo.	Mo Pac	8.50AM	5	Sat Jany 2nd	Chair Car.	
Ar. Kansas City	"	1.55PM	5	" " 2nd	"	
Lv. Kansas City	Santa Fe	5.15PM	11	" " 2nd	"	
Ar. Lawrence	"	5.56PM	11	" " 2nd	"	

All principal SANTA FE trains are now AIR-CONDITIONED

Remarks: Round trip rail fare as per above per capita \$55.71.

Lower berth Pittsburgh to St Louis \$4.95, upper \$3.75.

Grand Canyon National Park and the Indian-detours, on the Santa Fe to or from California and Southern Arizona, offer matchless stopovers of any length and at any season. The Santa Fe is the only railroad entering Grand Canyon National Park. Pullmans direct to the Rim. Indian-detours explore by motor the cliff dwellings, Indian pueblos and quaint native villages of the Spanish-Indian country about Old Santa Fé, New Mexico.



The Santa Fe is the only line under one management "all the way"—Chicago to California and Phoenix—thus insuring uniformity of service

- Motor Route Coördinated With Train Service
- ==== Santa Fe Double Track
- Santa Fe Single Track
- Other Lines

THE INDIAN-DETOUR AND GRAND CANYON LINE

The Atchison, Topeka and Santa Fe Railway System



Dr Allen.

From _____ To _____

ITINERARY OF YOUR TRIP

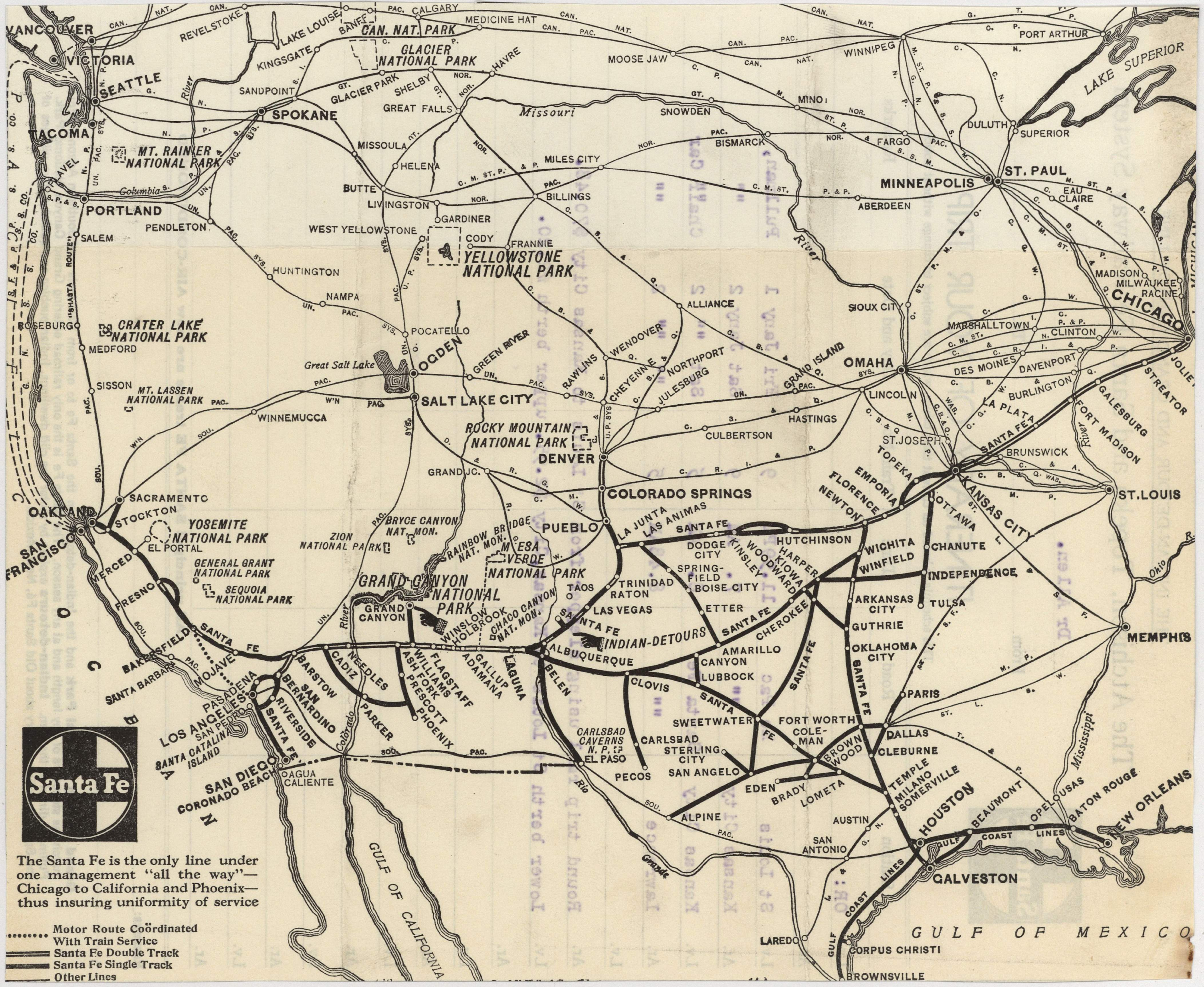
This schedule is based on current time tables, which are subject to change without notice

Station	Road	Time	Train No.	Day and Date	Remarks
Lv. OR:					
Ar.					
Lv. St Louis	Mo Pac	11.59PM	9	Fri Jany 1	Pullman,
Ar. Kansas City	" "	7. AM	9	Sat Jany 2	" "
Lv. Kansas City	Santa Fe	8. AM	5	Sat " " 2	Chalf Car
Ar. Lawrence	" "	8.48AM	5	" " " 2	" "
Lv.					
Ar.	Round trip rail using sleeper from St Louis to Kansas City \$70.48.				
Lv.	Lower berth St Louis to Kansas, City \$2.95. upper berth #2.20.				
Ar.					
Lv.					
Ar.					
Lv.					
Ar.					
Lv.					
Ar.					
Lv.					
Ar.					

All principal SANTA FE trains are now AIR-CONDITIONED

Remarks: _____

Grand Canyon National Park and the Indian-detours, on the Santa Fe to or from California and Southern Arizona, offer matchless stopovers of any length and at any season. The Santa Fe is the only railroad entering Grand Canyon National Park. Pullmans direct to the Rim. Indian-detours explore by motor the cliff dwellings, Indian pueblos and quaint native villages of the Spanish-Indian country about Old Santa Fé, New Mexico.



The Santa Fe is the only line under one management "all the way"—Chicago to California and Phoenix—thus insuring uniformity of service

- Motor Route Coördinated With Train Service
- ==== Santa Fe Double Track
- ==== Santa Fe Single Track
- Other Lines

GULF OF MEXICO

October 15, 1942.

memo -
make court
before N.Y. trip

Mr. John F. Coffey,
Graduate Manager, Athletic Association,
Fordham University,
New York, N.Y.

Dear Mr. Coffey:

It is very kind of you to inform us regarding the ball that will be used in the games in the Garden, and also concerning the impossibility of changing the end lines of the court.

With appreciation of your thoughtfulness, I am

Sincerely yours,

Director of Physical Education,
Varsity Basketball Coach.

FCA:AH

Athletic Association
FORDHAM UNIVERSITY
NEW YORK, N. Y.

October 12, 1942

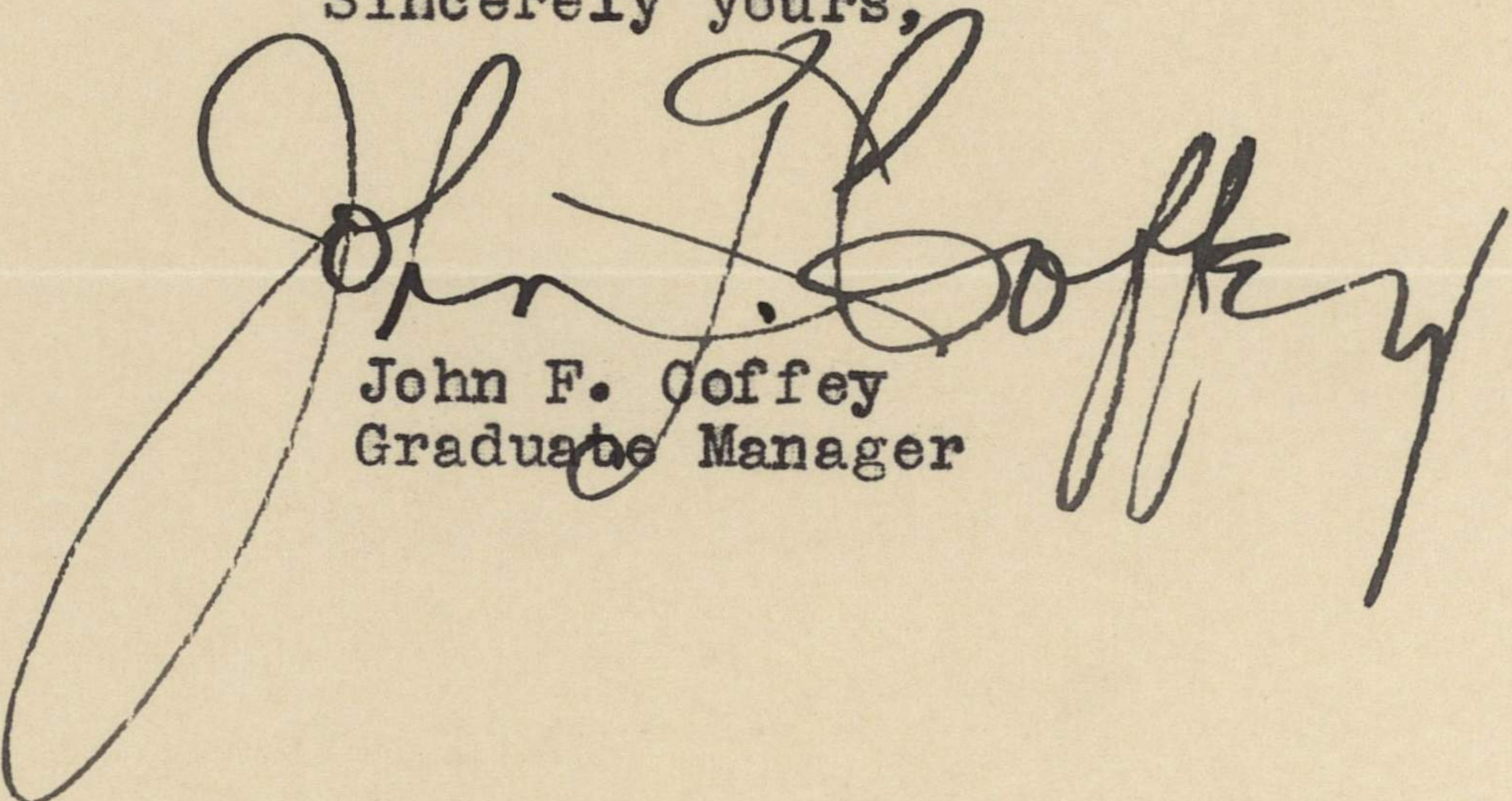
Dr. Forrest C. Allen
Coach of Basketball
University of Kansas
Lawrence, Kansas

Dear Doctor Allen:

For the basketball games at Madison Square Garden the New York colleges have decided to use the Goldsmith X9L ball as the official ball.

The Madison Square Garden court is 52 feet wide. The distance between the baskets is 82 feet. There is an extension of two feet behind the basket. It will be impossible to alter the court for the coming season in order to provide the extension of four feet behind the basket. Labor conditions and the schedule of events there make it impossible to change the end lines.

Sincerely yours,


John F. Coffey
Graduate Manager

JFC:af

December 19, 1942.

Mr. Waldo G. Bowman, Editor,
Engineering News-Record,
330 West 42nd Street,
New York City.

Dear Waldo:

We are glad to know that you can attend our game in Madison Square Garden on December 28th. Mr. Ned Irish has written us that he expects it to be a sell-out, and is limiting us to two tickets each for our guests. I am sorry that we cannot supply the six that you requested, but due to this restriction we will have two for you.

We will stay at the Hotel Belvedere, where you may get in touch with me.

Looking forward to seeing you, I am

Very cordially yours,

Director of Physical Education,
Varsity Basketball Coach.

FCA:AH

ENGINEERING NEWS-RECORD

PUBLISHED WEEKLY BY THE MCGRAW-HILL PUBLISHING CO.

330 West 42nd Street
New York, N. Y.

Dec. 15, 1942

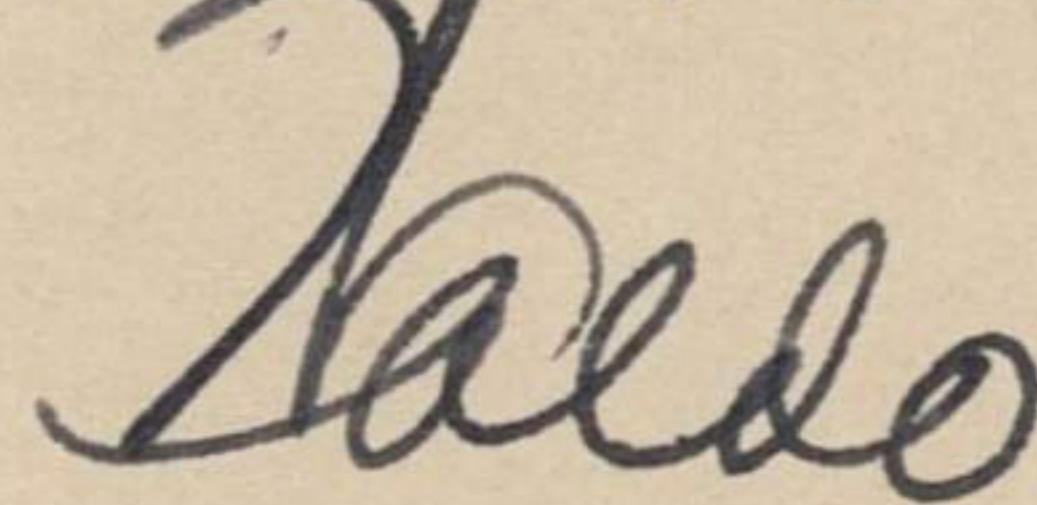
Mr. Forrest C. Allen
Director of Physical Education
University of Kansas
Lawrence, Kans.

Dear Doc:

Many thanks for your thoughtfulness in inviting us to the game. If possible, I would like to have six tickets.

We will all be looking forward to seeing you and Mrs. Allen.

Sincerely yours,



Waldo G. Bowman
Editor

WGB:M

December 19, 1942.

Dean George Esterly,
School of Business Administration,
University of Newark,
Newark, N.J.

Dear George:

We are counting on having you and Mrs. Esterly as our guests when Kansas plays Fordham in Madison Square Garden on December 26th. Mr. Ned Irish writes that he expects the game to be a sell-out, and for that reason is limiting us to two tickets for our guests.

We will be staying at the Hotel Belvedere, where you may get in touch with me. I will have your tickets for you.

Looking forward to greeting you, I am

Cordially yours,

Director of Physical Education,
Varsity Basketball Coach.

FCA:AH

December 8, 1942.

Mr. Robert E. Allen,
3904 Spruce,
University of Pennsylvania,
Philadelphia, Pa.

Dear Bob:

Mother just called me on the phone and said that Eleanor wanted some extra tickets. Let me know how many you want so that we can make arrangements early. If you have any additional names to add to your list we can take care of those.

We are staying at the Hotel Belvedere, just across the street from Madison Square Garden. I have written them for prices, and if you and Jean and Eleanor and Gil are planning to be in New York I thought you could stay at the same hotel where we have special rates. You and Gil could stay together and Eleanor and Jean could share a room.

After the game we will have a little party, and you may feel free to invite your friends to eat with our boys after the game.

Affectionately,

FCA:AH

December 8, 1942.

Miss Eleanor Allen,
Sergeant Hall,
University of Pennsylvania,
Philadelphia, Pa.

Dear Eleanor:

Mother just called me on the phone and said you wanted five tickets. You may count on them.

We are staying at the Hotel Belvedere. I have written them for prices, and if you and Gil and Bob and Jean are planning to be in New York I thought Bob and Gil could stay together and you and Jean could share a room. We have special rates, and of course I would be glad to have Gil as my guest. After the game we will have a little party and you may feel perfectly free to invite any of your friends to eat with our boys after the game.

The Hotel Belvedere is just across the street from Madison Square Garden. We are staying there to obviate taxi difficulty. We will get into New York on the 27th and play the 28th. If you and Gil want to go to New York early with Bob and Jean I could make arrangements for your reservations. You write and tell me what you want to do.

Mother talks one day about going and the next day she talks differently. She talked some of going ahead with Bob wrote he was having the flu. She could just as easily go to Philadelphia and visit with you children while we go on to Buffalo, but we will let her work that out.

Affectionately,

FCA:AH

Mrs. Nathaniel Elias

14 Washington Square East,

New York City

Nov. 7

Leona Baumgartner

December 10, 1942.

Mrs. H. Leigh MacCurdy,
25 Parkview Avenue,
Bronxville, New York.

Dear Betty:

Our basketball team is playing Fordham in Madison Square Garden on December 28th, and we want you and Leigh and Howard, if he is home from Dartmouth, to be our guests. There will be quite a Kansas conclave, and it will be a pleasure to see you there.

Kindly let me know at your early convenience about the number of tickets you will desire so that I can make the necessary arrangements.

With kindest regards, I am

Cordially yours,

FCA:AH

Director of Physical Education,
Varsity Basketball Coach.

December 10, 1942.

Mr. Waldo Bowman,
McGraw-Hill Publishing Co.,
330 West 42nd Street,
New York City.

Dear Waldo:

Our basketball team is playing Fordham University in Madison Square Garden on December 28th, and we want to invite you and Mrs. Bowman as our guests. If you will kindly let me know at your earliest convenience how many you will have in your party I will make the reservations for you.

We are expecting quite a Kansas conclave, and it will be a great pleasure to see you there.

Very cordially yours,

Director of Physical Education,
Varsity Basketball Coach.

FCA:AH

December 10, 1942.

Miss Mateel Rich,
Room 1001,
393 Seventh Avenue,
New York City.

Dear Miss Rich:

We are reserving three tickets for your party to attend our basketball game with Fordham in Madison Square Garden on December 28th. There will be quite a Kansas conclave, and we will be happy to see you there.

Cordially yours,

FCA:AH

Director of Physical Education,
Varsity Basketball Coach.

December 10, 1942.

Mrs. Nathaniel Elias,
14 Washington Square North,
New York City, N.Y.

Dear Leona:

Our basketball team will play against Fordham University in Madison Square Garden on December 28th, and I am hoping that you and your husband will be our guests for the evening.

If you will kindly let me know how many tickets you will desire I will be happy to make arrangements for them. We are expecting quite a Kansas conclave, and it will be a pleasure to have you join us.

With kindest regards, I am

Very cordially yours,

Director of Physical Education,
Varsity Basketball Coach.

FCA:AH

December 8, 1942.

Mr. Howard A. Rankin,
USNR Midshipmen's School,
Room 639 John Jay Hall,
New York, N.Y.

Dear Howard:

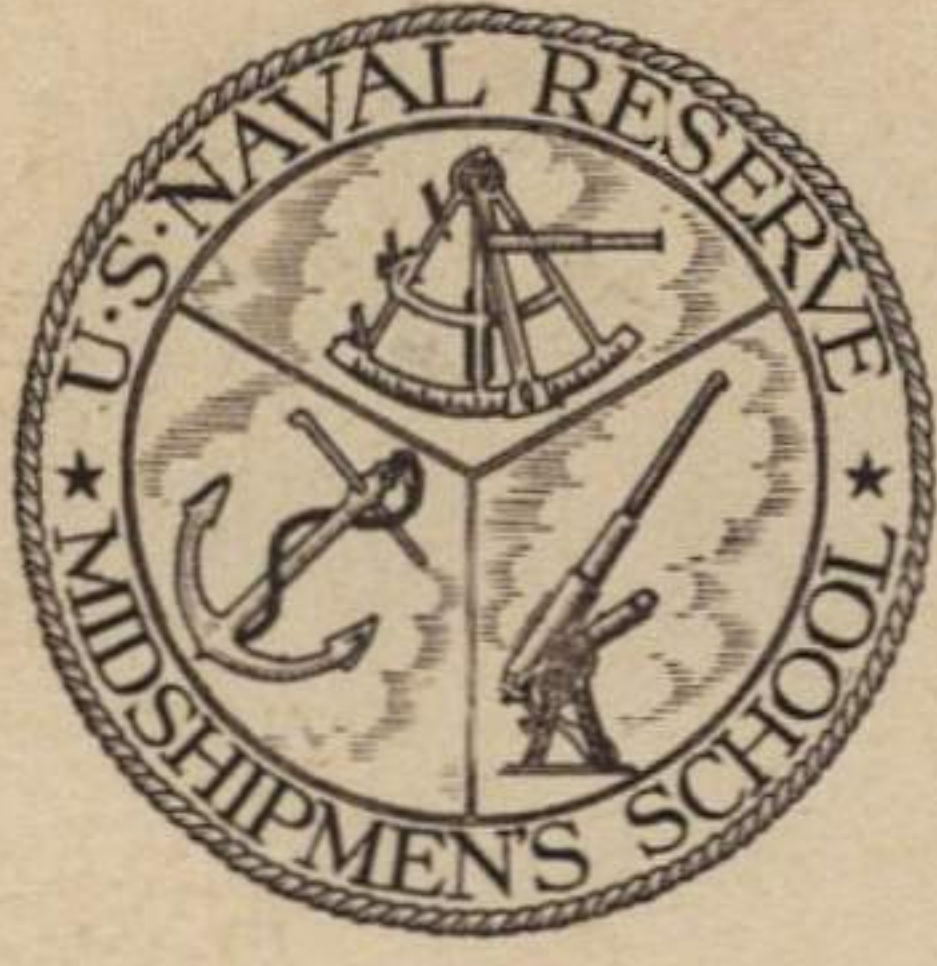
I am sorry that I have delayed answering your good letter of November 16th. Mrs. Hulteen wrote you regarding our playing Fordham at the Garden on the 28th. She sent you a schedule, and I know that you have had ample time to make arrangements to see us play.

Bobby is at the University of Pennsylvania studying medicine, and Eleanor is a senior there majoring in psychology. They will both be in New York for the game and we are expecting quite a conclave of Kansas people. It will certainly be a pleasure to see you and to hear you yell out that old "Rock Chalk, Jayhawk, K.U."

Very sincerely yours,

FCA:AH

Director of Physical Education,
Varsity Basketball Coach.



NEW YORK, N. Y.

November 16, 1942

Dear Dr. Allen;

I'm acting as spokesman for two K. U. grads of last year who are attending the U. S. N. R. Midshipmen's School in New York City.

We felt that on the back of our minds was the thought that the K. U. basketball team would be playing a game in New York this winter. Are we right, Dr. Allen?

If that is true would you let us know where and when, in order that we can make arrangements with our officers to attend the game. This school is pretty far from Kansas and we really would like to see a basketball game. For if K. U. plays in New York this winter we can promise you the ardent support of two fans. Otherwise we'll yell like hell for the Jayhawkers.

We'd certainly appreciate this information and hope to see K. U. in action this winter. Very sincerely
Howard Rankin

November 19, 1942.

Mr. Howard A. Rankin,
USNR Midshipmen's School,
Room 639 John Jay Hall,
New York, N.Y.

Dear Mr. Rankin:

Dr. Allen has received your letter of the 16th, which I am acknowledging in his absence. He will return to the office Monday, and I am sure will write you next week.

Yes, the Kansas basketball team plays in New York this winter. On December 26 they play St. Bonaventure, at Buffalo, and on December 28 they play Fordham University in Madison Square Garden. As soon as the printed schedules are ready for distribution we will be happy to send you some of them.

Sincerely yours,

Secretary to Dr. F. C. Allen

December 16, 1942.

Mr. Wallace E. Pratt,
30 Rockefeller Plaza,
Room 2961,
New York City, N.Y.

Dear Mr. Pratt:

Our University of Kansas basketball team is playing Fordham University in Madison Square Garden on December 28th, and we want very much to include you with our guests. We will be staying at the Hotel Belvedere, and you can get in touch with me there to let me know how many tickets you would like to have for your family.

We are expecting quite a Kansas conclave, and it will be a pleasure to see you with the group.

Very sincerely yours,

Director of Physical Education,
Varsity Basketball Coach.

FCA:AH

December 16, 1942.

Mr. Edward F. Hudson,
c/o Ted Bates, Inc.,
630 Fifth Avenue,
New York City, N.Y.

Dear Ted:

Our basketball team is playing Fordham University in Madison Square Garden on December 28th, and we want very much to include you with our guests. We will be staying at the Hotel Belvedere, and you can get in touch with me there to let me know how many tickets you would like to have for your family.

We are expecting quite a Kansas conclave, and it will be a pleasure to see you with the group.

Very sincerely yours,

Director of Physical Education,
Varsity Basketball Coach.

FCA:AH

December 19, 1942.

Mr. Ned Irish,
9 Rockefeller Plaza,
New York City, N.Y.

Dear Ned:

We have made tentative hotel reservations with the Hotel Philadelphian for December 30th, but I am waiting to hear from you before I make this definite. They have quoted us rates of \$2.00 per person for a double room with twin beds.

I want to be sure that you recommend this hotel before making a definite reservation. May I hear from you by return mail?

Our team is not going so well, but we will do the best we can under the circumstances.

Cordially yours,

Director of Physical Education,
Varsity Basketball Coach.

FCA:AH

December 16, 1942.

Mr. Ned Irish,
9 Rockefeller Plaza,
New York City.

Dear Ned:

What hotel do you recommend for us in Philadelphia? We have made no reservations as yet, and I will appreciate hearing from you by return mail.

Sincerely yours,

FCA:AH

Director of Physical Education,
Varsity Basketball Coach.

December 12, 1942.

Mr. Ned Irish,
Madison Square Garden,
New York City.

Athletic Board grants permission

Kansas play St. Joseph's December 30 Philadelphia.

Forrest C. Allen.

December 14, 1942.

Mr. Kenneth S. Adams,
President, Phillips Petroleum Company,
New York City.

31-30

Dear "Boots":

We are playing St. Bonaventure in Buffalo on December 26th —
and Fordham in Madison Square Garden on the 28th. We would like
to ask you and your family or friends to be our guests, and we
would also like to ask you to sit on our bench if you so desire.

Won't you write me and let me know if you will be in New
York City and the number of tickets you will be needing? It
will be a pleasure to see you.

I am sorry Kenneth did not come out for basketball, but I
imagine he had too much football and needed some time to recuperate
and to get on his studies.

With every good wish, I am

Sincerely yours,

Director of Physical Education,
Varsity Basketball Coach.

FCA:AH

November 3, 1942.

Mr. Louis G. Lower, Director,
Municipal Auditorium,
Kansas City, Missouri.

Dear Lou:

I was glad to have a talk with you last Saturday at the football game. I am confirming the fact that on the 5th of December Argentine High School will play Rockhurst High as a preliminary to the Kansas-Gardner Air Base game. And on the 11th of December Rockhurst High will play Ward High School.

I am writing to Father Luebke of Rockhurst High School, to Tom Dorney of Ward High School, and to Vice Principal Shankland of Argentine High School. As soon as I get a confirmation from these people I will communicate with you at once.

Lou, I am wondering if we could not make some arrangement where we could get a special ticket from you to be sold by the high schools only at the principal's office for these games, say 25¢ for the high school youngsters. Then give the high schools half of that and we would count the other half on gross sales for the auditorium. I do not believe that we will get a lot of high school youngsters, but we will have the attraction of the game and at the same time we will give the high schools an opportunity to make a little money. I believe the good will would be more than balanced by what we would get out of it. The idea of this sale would be that they would only be sold at the high schools. If the tickets were not bought at that time, and they came to the hall they would pay the regular price like anyone else.

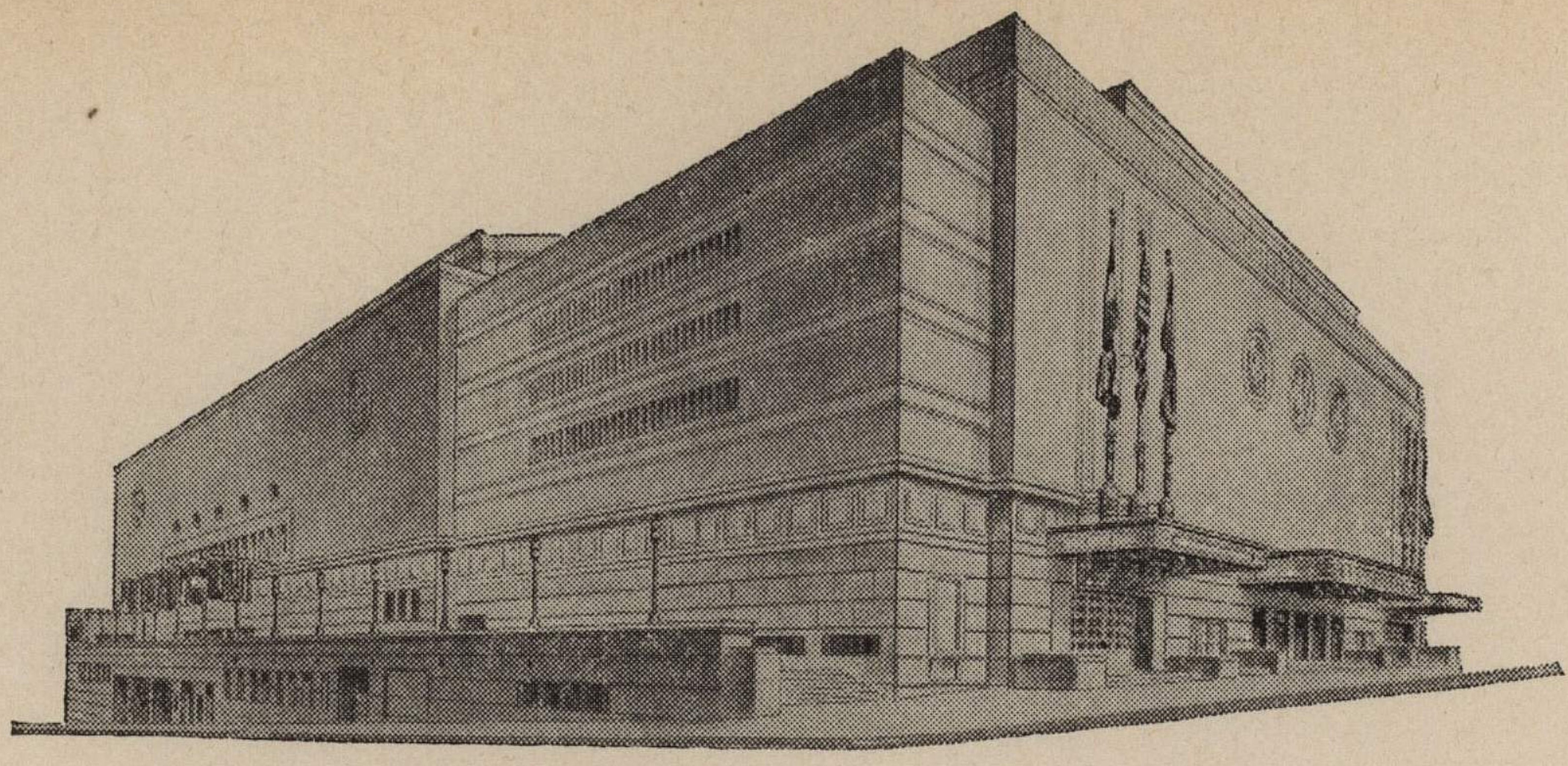
Write me and let me know what you think about this, and if you agree I believe we can have a fine crowd from the high school youngsters. Let me have your reaction.

Sincerely yours,

Director of Physical Education,
Varsity Basketball Coach.

FCA:AH

ADVISORY BOARD
FRED G. BUFFE
Chairman
JOHN C. GROVER
Vice-Chairman
H. E. BONING, JR.
Secretary
BARNEY L. ALLIS
HARRY M. GAMBREL
R. CROSBY KEMPER
FRED M. LEE
DORMAN H. O'LEARY
HARRY H. WELSH, JR.



MAIN ARENA
12,000 seating capacity
MUSIC HALL
2,572 seating capacity
LITTLE THEATRE
600 seating capacity
EXHIBITION HALL
120,000 square feet
COMMITTEE ROOMS (23)
seating capacities 25 to 500

MUNICIPAL AUDITORIUM

KANSAS CITY, MISSOURI

LOUIS G. LOWER, Director
C. B. HOFF, Ass't Director

October 30, 1942.

Mr. Forrest C. Allen
University of Kansas
Lawrence, Kansas

Dear "Doc":

Rockhurst High School informs me that they won't be ready to go on December 5th, but would like to play Wyandotte on December 11th.

We can get Schooley's to play Ft. Leavenworth on December 5th if you agree. Jack Gardner would like to have it this way. May see you at the game to-morrow.

Sincerely,

Louis G. Lower
Louis G. Lower,
Director.

Frather Lubke

LGL:EH

5th Argentine vs Rockhurst Hi
11th Ward vs Rockhurst Hi
Ward free adm to half



November 3, 1942.

Mr. J. H. Shankland,
Vice Principal,
Argentine High School,
KansasCity, Kansas.

Dear Friend Shank:

We have a game on December 5th with Jack Gardner's Air Base boys in Municipal Auditorium. I have talked to Tom Van Cleave and asked him to see if we couldn't arrange a game between Argentine High School and Rockhurst High as a preliminary to our game, and I understand that Argentine and Rockhurst are agreeable to this. I am writing you for a final confirmation. If your school is willing to play we will be very happy, and we will fix up the necessary complementaries for faculty, coaches, and so forth for this game.

I have written Lou Lower, director of the Auditorium, suggesting that he have a special ticket made to be sold only by the high schools at the principal's office to high school students, say for 25¢. Then give the high schools half of that and we would count the other half on gross sales for the auditorium. This would give the high schools an opportunity to make a little money, and still permit many of the Argentine followers to see the game at a nominal cost.

As soon as Lou writes me I will inform you, and I will appreciate a letter from you confirming your permission to play Rockhurst.

With all good wishes, I am

Very sincerely yours,

Director of Physical Education,
Varsity Basketball Coach.

FCA:AH

November 3, 1942.

Mr. Tom Dorney,
Athletic Director,
Ward High School,
Kansas City, Mo.

Dear Tom:

We have a game on December 11th with Rockhurst College in the Municipal Auditorium. I have talked to Tom Van Cleave and asked him to see if we couldn't arrange a game between Ward High School and Rockhurst High as a preliminary to our game, and I understand that Ward and Rockhurst are agreeable to this. I am writing you for a final confirmation. If your school is willing to play we will be very happy, and we will fix up the necessary complimentaries for faculty, coaches, and so forth for this game.

I have written Lou Lower, director of the Auditorium, suggesting that he have a special ticket made to be sold only by the high schools at the principal's office to high school students, say for 25¢. Then give the high schools half of that and we would count the other half on gross sales for the auditorium. This would give the high schools an opportunity to make a little money, and still permit many of the Ward followers to see the game at a nominal cost.

As soon as Lou writes me I will inform you, and I will appreciate a letter from you confirming your permission to play Rockhurst.

With all good wishes, I am

Very sincerely yours,

Director of Physical Education,
Varsity Basketball Coach.

FCA:AH

November 3, 1942.

Father Luebke,
Rockhurst High School,
Kansas City, Mo.

Dear Father Luebke:

Mr. Tom Van Cleave has arranged with Argentine High School to play Rockhurst High on December 5th, and Ward High School to play Rockhurst High on December 11, as preliminaries to our games in the Municipal Auditorium. I have written to Vice Principal Shankland and Mr. Tom Dorney to get their final confirmation.

I have also written to Lou Lower, director of the Auditorium, suggesting that he have a special ticket made to be sold only by the high schools at the principal's office to high school students only, say for 25¢. Then give the high schools half of that and we would count the other half on gross sales for the auditorium. This would give the high schools an opportunity to make a little money, and still permit many of the Rockhurst followers to see the game at a nominal cost.

As soon as Lou write me I will inform you of any such arrangement.

By the way, does Rockhurst have a band? Perhaps the college band would want to play when we play the Rockhurst team on December 11th. If you do not have a band, we can ask the Argentine band for the 5th, but since you are closer I thought perhaps you might want to play. Let me know what your reaction is on this matter.

Very sincerely yours,

Director of Physical Education,
Varsity Basketball Coach.

FCA:AH

November 3, 1942.

Mr. Tom Van Cleave, Jr.,
Wyandotte County Court House,
Kansas City, Kansas.

Dear Tommy:

I am enclosing carbon copies of the letters I have written concerning the high school games to be played as preliminaries to our games in Municipal Auditorium on December 5th and 11th. These are sent for your information.

I want to assure you that we deeply appreciate all you have done for us. Your loyalty and cooperation are wonderful.

Very cordially yours,

Director of Physical Education
Varsity Basketball Coach.

FCA:AH
Enc.