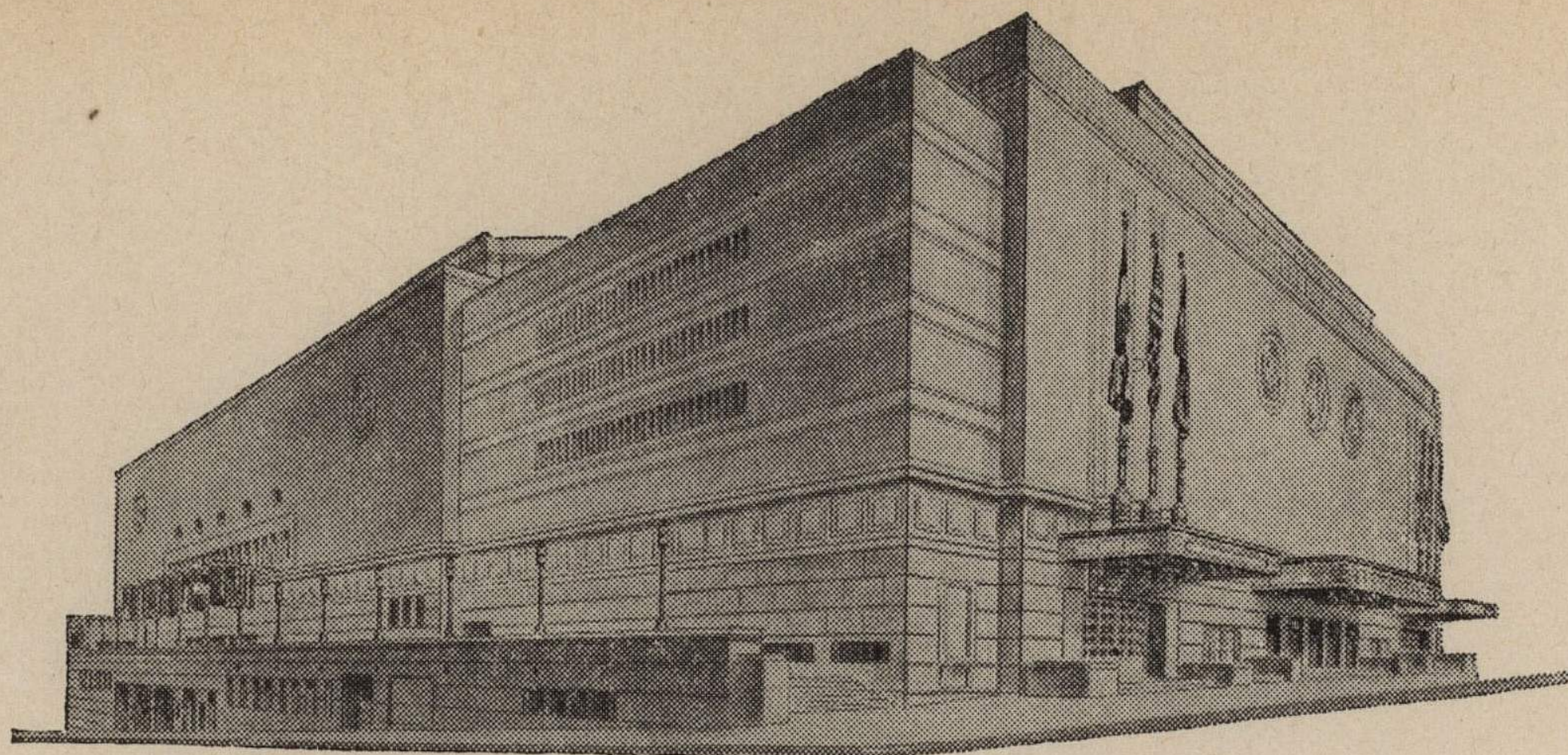


ADVISORY BOARD
FRED G. BUFFE
Chairman
JOHN C. GROVER
Vice-Chairman
H. E. BONING, JR.
Secretary
BARNEY L. ALLIS
HARRY M. GAMBREL
R. CROSBY KEMPER
FRED M. LEE
DORMAN H. O'LEARY
HARRY H. WELSH, JR.



MAIN ARENA
12,000 seating capacity
MUSIC HALL
2,572 seating capacity
LITTLE THEATRE
600 seating capacity
EXHIBITION HALL
120,000 square feet
COMMITTEE ROOMS (23)
seating capacities 25 to 500

MUNICIPAL AUDITORIUM KANSAS CITY, MISSOURI

LOUIS G. LOWER, Director
C. B. HOFF, Ass't Director

October 30, 1942.

Mr. Forrest C. Allen
University of Kansas
Lawrence, Kansas

Dear "Doc":

Rockhurst High School informs me that they won't be ready to go on December 5th, but would like to play Wyandotte on December 11th.

We can get Schooley's to play Ft. Leavenworth on December 5th if you agree. Jack Gardner would like to have it this way. May see you at the game to-morrow.

Sincerely,

Louis G. Lower
Louis G. Lower,
Director.

Frather Lubke

LGL:EH

5th Argentine vs Rockhurst Hi
11th Ward vs Rockhurst Hi
Ward free adm to half

