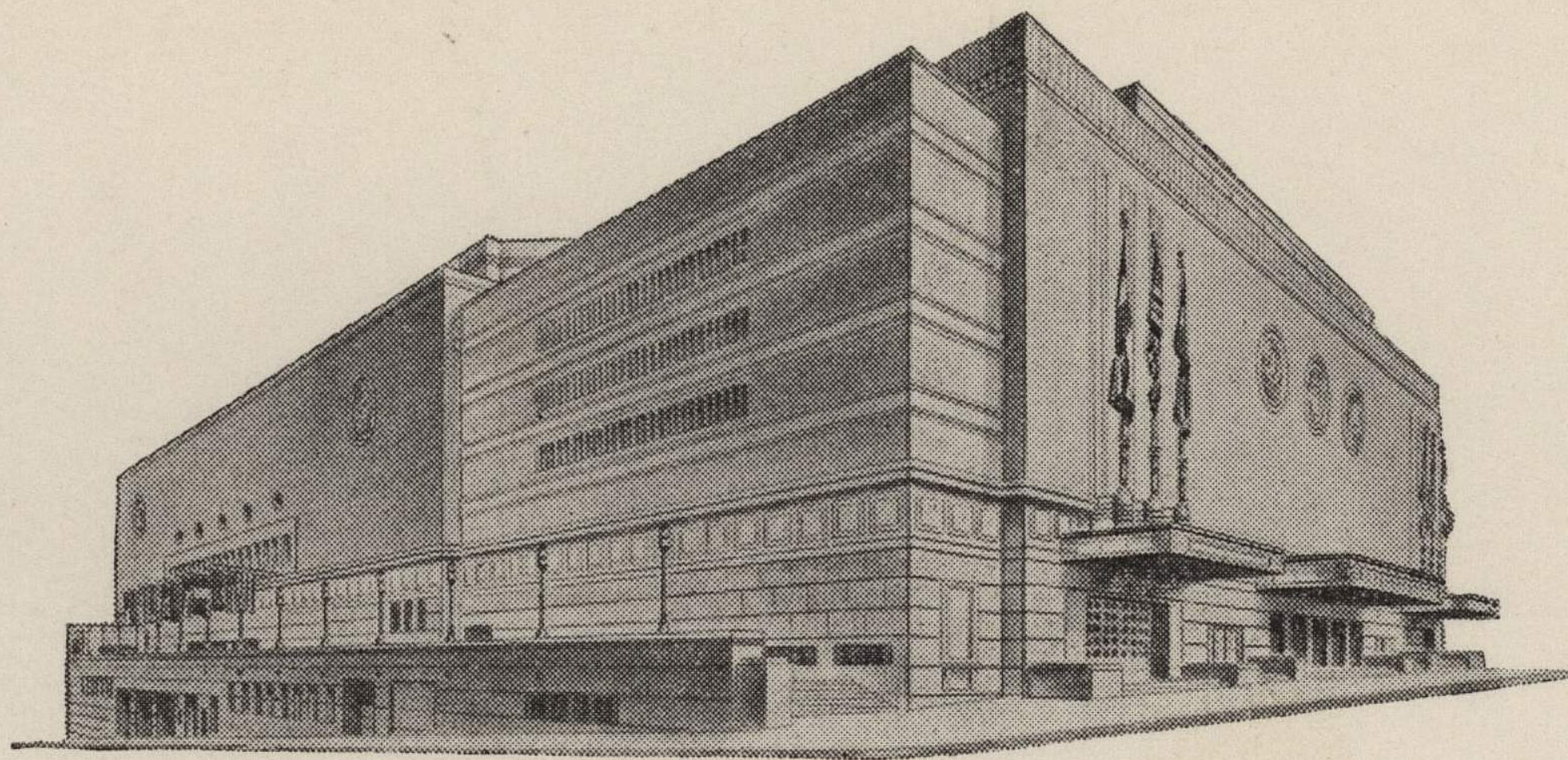


ADVISORY BOARD

FRED G. BUFFE
Chairman
JOHN C. GROVER
Vice-Chairman
H. E. BONING, JR.
Secretary
BARNEY L. ALLIS
HARRY M. GAMBREL
R. CROSBY KEMPER
FRED M. LEE
DORMAN H. O'LEARY
HARRY H. WELSH, JR.



MAIN ARENA
12,000 seating capacity
MUSIC HALL
2,572 seating capacity
LITTLE THEATRE
600 seating capacity
EXHIBITION HALL
120,000 square feet
COMMITTEE ROOMS (23)
seating capacities 25 to 500

MUNICIPAL AUDITORIUM

KANSAS CITY, MISSOURI

~~LOUIS G. LOWER, Director~~
LOUIS G. LOWER, ~~Acting~~ Director

May 16, 1942.

Dr. Forrest C. Allen
University of Kansas
Lawrence, Kansas

Dear "Phog":

No apology necessary for your overlooking my title. As a matter of fact, the Auditorium staff has never paid much attention to titles anyway and that policy will continue. We try to build up the same spirit of teamwork that has been always present in your basketball teams.

In accordance with your request, you will find enclosed contracts for the Rockhurst - Kansas University game on December 11, 1942. I will be glad to hear from you if other plans develop.

With kindest personal regards, I am

Sincerely yours,

A handwritten signature in cursive script that reads "Louis G. Lower". The signature is written in dark ink and is positioned above the typed name.

Louis G. Lower,
Director

LGL:EH
Enc: 2
contracts.

