

CLASS OF SERVICE

This is a full-rate Telegram or Cablegram unless its deferred character is indicated by a suitable symbol above or preceding the address.

WESTERN UNION

1201

SYMBOLS

- DL=Day Letter
- NL=Night Letter
- LC=Deferred Cable
- NLT=Cable Night Letter
- Ship Radiogram

R. B. WHITE
PRESIDENT

NEWCOMB CARLTON
CHAIRMAN OF THE BOARD

J. C. WILLEVER
FIRST VICE-PRESIDENT

The filing time shown in the date line on telegrams and day letters is STANDARD TIME at point of origin. Time of receipt is STANDARD TIME at point of destination
Received at 646 Massachusetts St., Lawrence, Kansas. Phone 2764

1941 FEB 1 PM 1 57

KAV50 16=WICHITA KANS 1 107P

DR FOREST C ALLEN=

UNIVERSITY OF KANSAS

AS PER AGREEMENT WE FURNISH BALL ONE HALF (LAST-BILT) YOU
FURNISH YOUR BALL OTHER HALF=

=W H HENNIGH

*adse
R-201P*

CLASS OF SERVICE

This is a full-rate Telegram or Cablegram unless its deferred character is indicated by a suitable symbol above or preceding the address.

WESTERN UNION

1201

SYMBOLS

- DL = Day Letter
- NL = Night Letter
- LC = Deferred Cable
- NLT = Cable Night Letter
- Ship Radiogram

R. B. WHITE
PRESIDENT

NEWCOMB CARLTON
CHAIRMAN OF THE BOARD

J. C. WILLEVER
FIRST VICE-PRESIDENT

The filing time shown in the date line on telegrams and day letters is STANDARD TIME at point of origin. Time of receipt is STANDARD TIME at point of destination

KAV92 17=WICHITA KANS 1 705P

1941 FEB 1 PM 7 39

DR FORREST C ALLEN=

UNIVERSITY OF KANSAS KR=

WE AGREED WICHITA FURNISH BALL ONE HALF KANSAS FURNISH
BALL THEY WISH TO PLAY OTHER HALF WITH=

W H HENNIGH.

*add
R-740P*

WESTERN UNION

Feb. 1, 1941

COACH BILL HENNIGH
WICHITA UNIVERSITY
WICHITA, KANSAS

WIRE IMMEDIATELY WHAT BALL WE ARE TO USE

Forrest C. Allen

Bob Allen
Jim Arnold
Don Blair
John Buescher
Howard Engleman
Ed. Hall
Vance Hall
Bill Hogben

T.P. Hunter
John Kline
Dick Miller
Norman Sanneman
Marvin Sollenberger
Charles Walker
Virgil Wise
Larry Hensley

The team will leave Lawrence, Santa Fe at ^{10:02} 8:49 A.M. Sunday Feb. 2
arrive Wichita, Santa Fe at ~~1:01~~ 2:01 P.M.
2:35

The team will leave Wichita, Santa Fe at 9:50 A.M. Tuesday Feb. 4
arrive Lawrence, Santa Fe at 1:00 P.M.

January 30, 1941

Mr. A.J. Gebert
Director of Athletics
University of Wichita
Wichita, Kansas

Dear Al:

Thank you for your letter of the 28th instant, giving us information on the officials and the fact that we should have a very good turnout for our game on Monday, February 3.

Looking forward to seeing you, I am,

Sincerely yours,

Director of Physical Education and Recreation
Varsity Basketball Coach

FCA:lg

THE MUNICIPAL
UNIVERSITY OF WICHITA
WICHITA, KANSAS

January 28, 1941

E. P. ✓

Mr. Forrest C. Allen
Varsity Basketball Coach
University of Kansas
Lawrence, Kansas

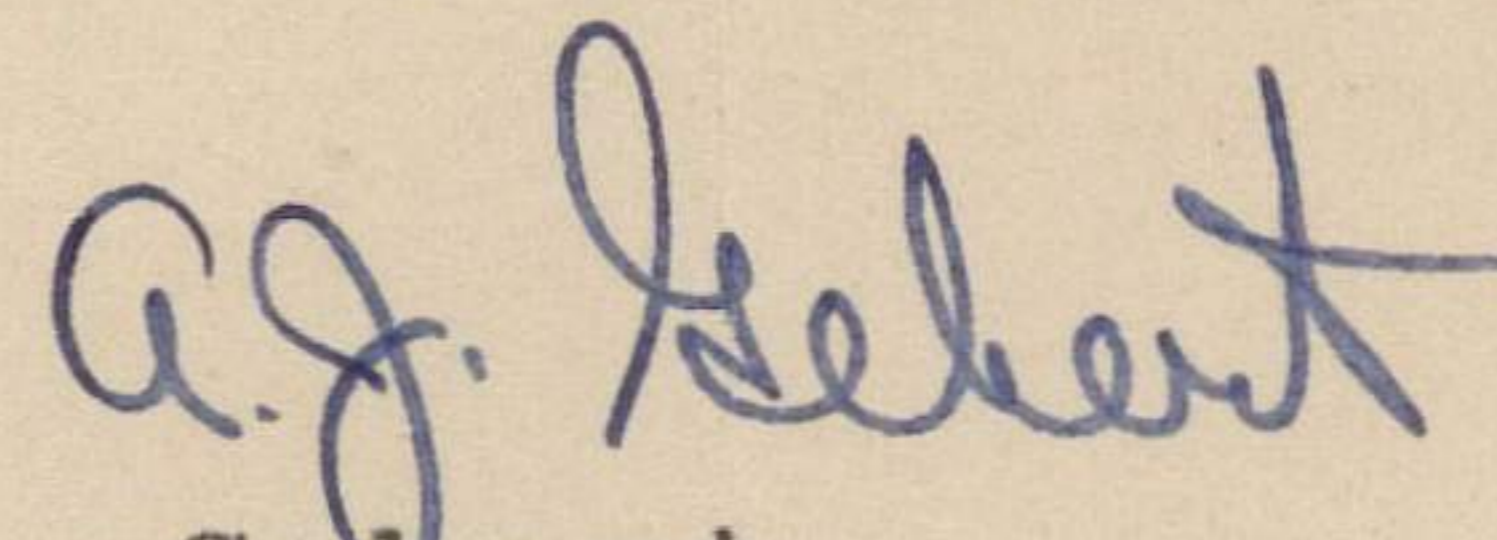
Dear Mr. Allen:

In answer to your letter of January 24 relative to officials for our basketball game here in Wichita on February 3, we have scheduled Mr. Elser and Mr. Hinshaw. These men have been definitely engaged for our game. Sincerely hope that this answers your letter satisfactorily.

I checked with Mr. Levitt yesterday and we have had many requests for tickets from out of the city. I would not be a bit surprised but what we will have a very fine crowd. I know that is of interest to you.

Will be looking forward to seeing you some time Sunday.

Sincerely yours,



A. J. Gebert
Director of Athletics

AJG:lr

January 28, 1941

Mr. Jack Copeland
Sports Editor
Wichita Beacon
Wichita, Kansas

Dear Jack:

I have just talked to Horace Mason and he stated that he is getting some glosses together and rushing them to you at once by special delivery.

I am sending you a gloss that Ned Irish sent me after it had been returned to him from the A.P. I have a notation on it about Bob Johnson. He is no longer on the squad so if you want to use T.P. Hunter in his place it will be okay.

Thanks for the information regarding the officials and other details. We will arrive on the Rock Island from Lawrence at 11:54 and then we will go directly to the Allis Hotel.

Very cordially yours,

Director of Physical Education and Recreation
Varsity Basketball Coach

FCA:lg
Enc.

January 13, 1941

Mr. Jack Copeland
Sports Editor
The Wichita Beacon
Wichita, Kansas

Dear Jack:

Thank you very much for your very kind special delivery letter as of January 17, giving me the information on the Allis Hotel. It was very nice of you to be so prompt. I am writing Mr. Frank Ripple, Manager of the Allis, and I am very sure that you have much to do with his decision, although I do remember he or his predecessor definitely made the promise to us and we are entitled to it.

I went down and scouted the Nebraska-Kansas State game last night at Manhattan and I do not believe we are rugged enough for their type of milling on the Kansas State floor next Monday night, but we will give them all that a small and willing team has in their repertoire.

You bet your life I will tell Horace Mason to save you a seat in the press box for the game with Oklahoma at Lawrence on March 7.

I also told him about sending you double duty publicity stuff on our game with Wichita on February 3.

With all good wishes, I am,

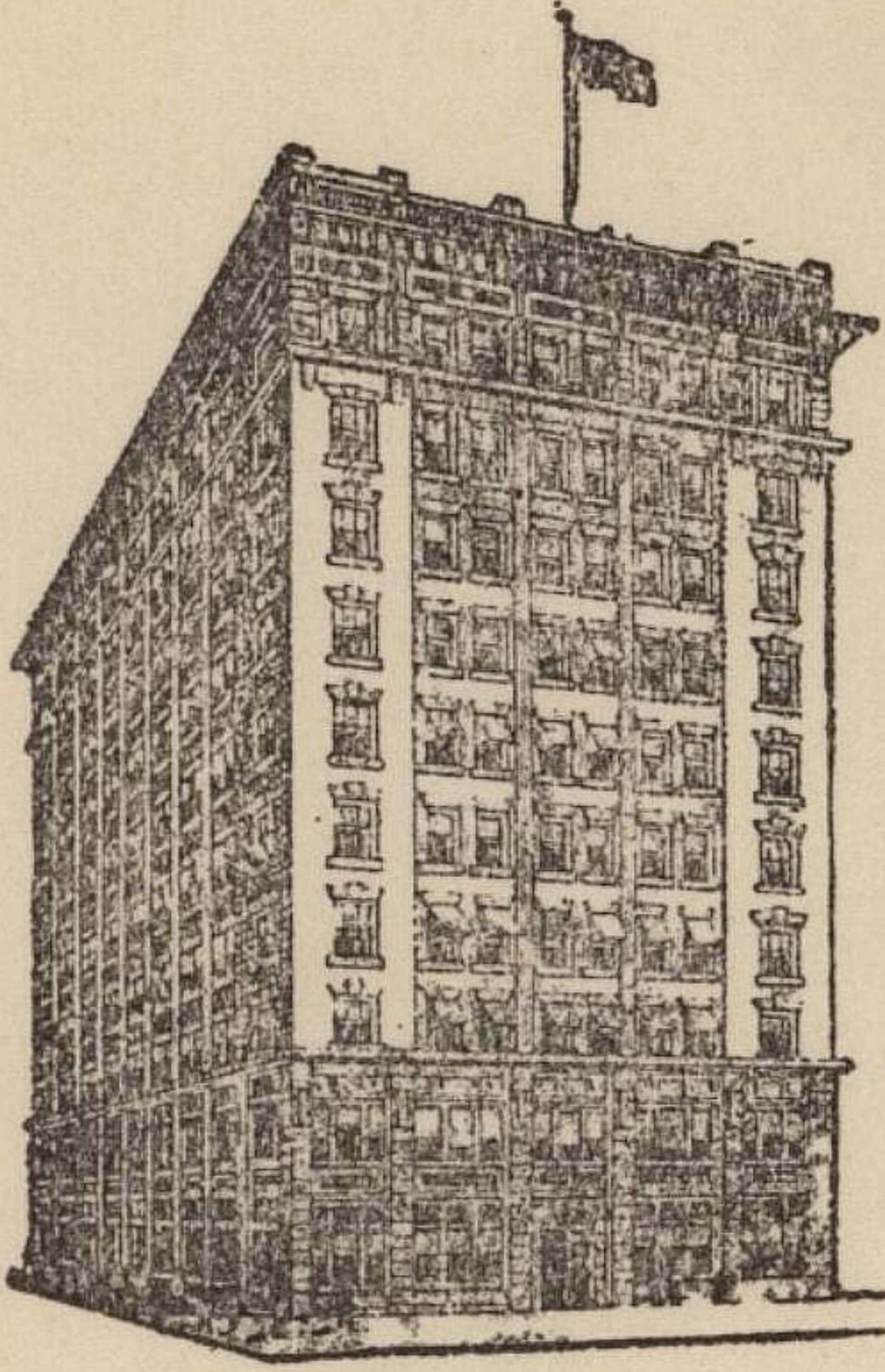
Sincerely yours,

Director of Physical Education and Recreation
Varsity Basketball Coach

FCA:lg

LARGEST DAILY AND SUNDAY CIRCULATION
IN THE STATE OF KANSAS

ASSOCIATED PRESS
UNITED PRESS
INTERNATIONAL NEWS SERVICE



HOME OF THE WICHITA BEACON

The Wichita Beacon

EVENING AND SUNDAY MORNING
M. M. LEVAND, PRESIDENT

WICHITA, KANSAS

January 17, 1941

Dr. F. C. Allen
University of Kansas
Lawrence, Kansas

Dear Phog:

I was happy to hear from you and to learn the boys looked much better against Iowa State than they did against Oklahoma. Frankly, I was disappointed down there, but I was also aware that the team wasn't mentally fit for the opening game. I felt reasonably certain that they would come along for both Iowa State and Missouri.

What's wrong with Engleman? I see Missouri held him down to 25 points!

I called Mr. Frank Ripple, manager of the Allis, relative to your team stopping there at the \$1.50 rate. At first, he wasn't so hot on the idea, but I reminded him of the previous agreement and he admitted that it was only the proper thing to do. So please write him as soon as possible to make final arrangements. In view of the fact that your "B" team is also playing I told him that you would most likely want reservations for 20. Your letter did not state the number of men who would make the trip.

I am extremely sorry that Dr. Neff called wanting to cancel the game. The very thought of such a procedure was most disgusting. I know he has been around intercollegiate athletics for a long time and should have known better.

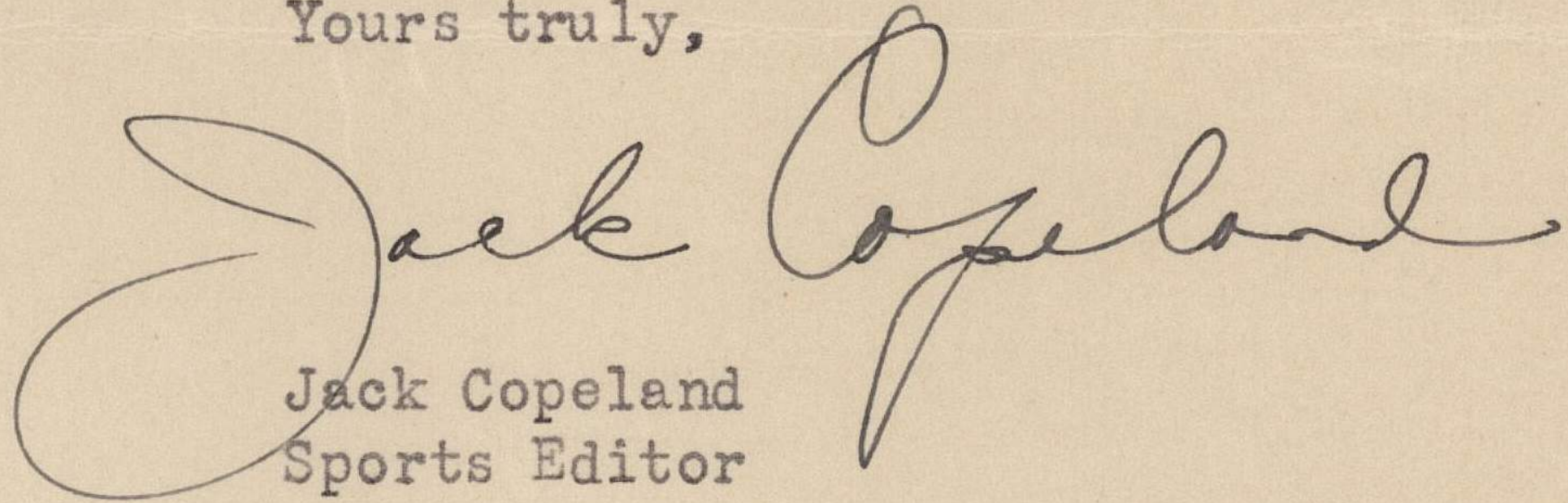
I'll admit Wichita hasn't had such a hot season, but the Shockers aren't the first basketball team to collapse. It may be that they will hit a winning stride before long. Anyway, I know the game will draw plenty of people and I am certain that both institutions will make money. We have some elaborate publicity programs planned and regardless of whether the other paper cooperates we will put over the show for you.

Dr. F. C. Allen - 2

By the way, please tell Horace Mason to save me a seat in the press box for the Oklahoma game at Lawrence. I shall enjoy seeing you reverse that Norman decision if for nothing else than the mad dash from Norman to Oklahoma City.

With kindest personal regards and wishing you continued success in the Big Six basketball race, I am

Yours truly,

A handwritten signature in cursive script that reads "Jack Copeland". The signature is fluid and elegant, with a large initial "J" and a long, sweeping underline.

Jack Copeland
Sports Editor

jc/vw

January 18, 1941

Mr. Frank Ripple
Manager, Allis Hotel
Wichita, Kansas

Dear Mr. Ripple:

I have just had a letter from my good friend Jack Copeland in which he states that you will make us the usual rate of \$1.50 per person for our basketball team when we come to your city for our game on February 3. This was the rate we obtained last year when we played in the Big-Six Tournament.

At the present time, we are planning to come down on the Streamliner the morning of February 2 and be with you both nights February 2 and 3; returning the morning of the 4th to Lawrence. There will be better than 15 or 16 in our party, but the number has not been definitely determined as yet. In a very short while I will be able to give you this information and will write you.

Thanking you for your consideration, I am,

Very cordially yours,

Director of Physical Education and Recreation
Varsity Basketball Coach

FCA:lg

January 16, 1941

Mr. Jack Copeland
The Wichita Beacon
Wichita, Kansas

Dear Jack:

I certainly enjoyed my visit with you on my way back from Norman, although our team played terrible ball. We did somewhat better against Iowa State but again I am afraid for them against Missouri tonight, because it seems this outfit never plays two good games in succession. They always have to put out so much to overcome the height advantage of the opponents, that they are generally too tired out to do much for the next encounter. While our boys are somewhat tall, near six feet, none of them are heavy except Kline. All of them weigh about 165 pounds and that is not much in this Big-Six League.

Jack, I want you to do a favor for me, will you? I understand the Wichita hotels are pretty much crowded due to the business boom. Last year the Allis Hotel gave us rates of \$1.50 per man, two men in the room, per day. After the Tournament I went to the management of the Allis Hotel and made reservations for this year at the same rate, because we had already tentatively scheduled this game. The management definitely gave me his word that the price would be the same and all I had to do was to write when we were ready to come and he would fix us up.

When Mrs. Allen and I drove to Austin, Texas last summer we stayed overnight in Wichita and I again stopped in to talk to the management, telling him about the game and he said it was okay again. However, since the business boom, I am afraid they may want to raise the rates on us and I want you to protect me. We want to come down there on the Streamliner the morning of the 2nd. We thought we would work out at the Forum, if it is open that day, and stay all night in Wichita both the 2nd and the 3rd, and will come back on the Streamliner the morning of the 4th.

You see, there is no school in session as it is between semesters, and since we would have to buy our players food here, it is practically as cheap to buy it in Wichita. By going in a day earlier, you could take some shots of the team and build up the publicity a little better.

Will you kindly let me hear from you after you have seen the Allis manager? We want to be assured of the fact that they will give us the price they quoted originally. Then I will write the Allis Hotel, but first I want you to break the ground for me. I will appreciate this very much.

I have contacted Horace Mason and will see that he sends you additional information to that already sent you.

Mr. Knapp of the Wichita University called me and wanted to cancel the game, but since it is very difficult for us to get another game at this time, and since we wanted to use this as a break ~~in~~ between semesters, I am sorry we could not call it off. We would then have no game from January 20 until February 10. That is a long time between games.

Thanking you for your favor, I am,

Sincerely yours,

February 5, 1941

Mr. Frank L. Ripple
Manager, Allis Hotel
Wichita, Kansas

Dear Mr. Ripple:

Howard Engleman threw so many baskets the other night that he forgot all about returning his hotel key. We are returning it herewith.

We want you to know that the boys had a very nice time and enjoyed your splendid hospitality.

Sincerely yours,

Director of Physical Education and Recreation
Varsity Basketball Coach

FCA:lg

January 24, 1941

Mr. John D. Florance
Traveling Passenger Agent
Chicago, Rock Island & Pacific Railway Co.
1200 Fidelity Building
Kansas City, Missouri

Dear Cap:

Thanks for arranging for our train service
to Wichita on February 2.

I am pretty sure now that we will not have even
20 men; however, we will have 15 and perhaps a few more.
I will let you know a little later, or I will call John Robb
and let him know the exact number. We have had a good many
ineligibles, and I think we may be hard pressed to find
enough for two good teams.

Would you have your office send me one of your
breakfast menus, including the regular table d'hote or
club service breakfast?

I am sorry you will not be with us. Good luck
to you.

Sincerely yours,

Director of Physical Education and Recreation
Varsity Basketball Coach

THE CHICAGO, ROCK ISLAND AND PACIFIC RAILWAY COMPANY

FRANK O. LOWDEN, JAMES E. GORMAN, JOSEPH B. FLEMING, TRUSTEES



P. W. JOHNSTON,
GENERAL PASSENGER AGENT

1200 FIDELITY BUILDING

KANSAS CITY, MO., Jan. 23, 1941.

File S5-2943.

Dr. F. C. Allen,
Director of Physical Education,
University of Kansas,
Lawrence, Kansas

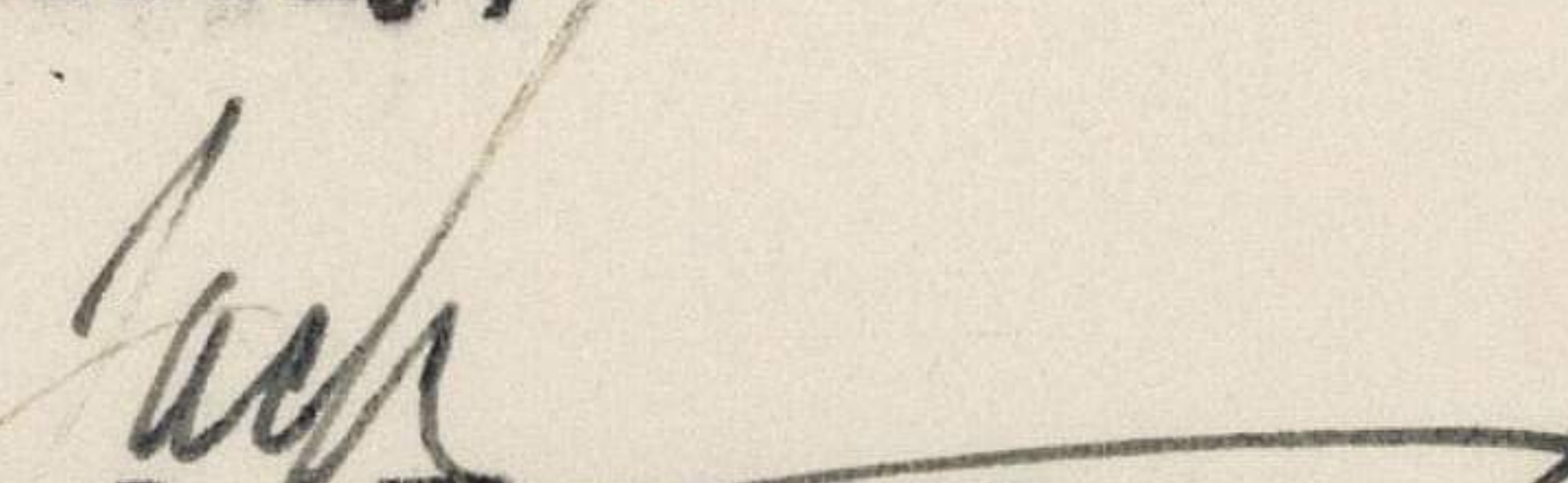
Dear Doctor:

For your University of Kansas "A" and "B" Basketball Teams, to Wichita, have reserved 25 seats on our Rocket Train No. 509 leaving Lawrence 8:42 AM, February 2 to Wichita, also similar space returning from Wichita 6:42 PM, Tuesday, February 4, arriving Lawrence 9:53 PM.

Have also arranged for a party fare of \$5.45 per capita for the round-trip.

Regret that on account of Military Trains I will probably be unable to go with you on this trip. However, our Wichita representative, Mr. N. E. Black, will meet you on arrival and assist in any way possible.

Sincerely,


John D. Florence
Traveling Passenger Agent

ROUTE OF THE "ROCKETS"
THE "GOLDEN STATE LIMITED" TO CALIFORNIA
"ROCKY MOUNTAIN LIMITED" TO COLORADO
AIR CONDITIONED THROUGHOUT

January 21, 1941

Mr. Frank L. Ripple
Manager, Allis Hotel
Wichita, Kansas

Dear Mr. Ripple:

A little later on I will definitely give you the number of men on our basketball team who will come to Wichita. It may exceed 16 up to the number of 20, but I am not sure just at the present time.

Thank you for your communication.

Sincerely yours,

Director of Physical Education and Recreation
Varsity Basketball Coach

FCA:lg



WICHITA, KANSAS

January 20, 1941

Mr. Forrest C. Allen
Varsity Basketball Coach
University of Kansas
Lawrence, Kansas

Dear Mr. Allen:

This will confirm your reservations for your group of approximately 15 or 16 persons of your Basketball team beginning February 2nd, two men to a room with double bed at \$1.50 per person. Although we have a large convention scheduled beginning on the 3rd we will see that your entire group is taken care of.

Thanking you for this reservation, we are

Cordially yours,

THE ALLIS HOTEL

A handwritten signature in cursive script, reading 'Frank L. Ripple', is written over the typed name.

Frank L. Ripple
Manager

FLR:EF

539

Jack Capland Sports Editor Wichita Ks
Wichita Beacon

Day Press Gate Collect -

Harvard Englemans trick knee has healed entirely and the fact that Bobby Allen and John Kline are three year team mates begets a confidence and team play that permits Engleman more shots than was usual heretofore.

Engleman, ^{at present} does not propose to play basket ball after he graduates from the Univ. of Kansas, ^{he is going into business} hence he is putting his all into his final years effort.

No member of the team begrudges Engleman his goals. He is very ^{modest} ~~modest~~ cooperative and one of the most popular leaders on the campus. Engleman is President of his senior class School of Business. I think that he will smash the Big Six scoring Record.

STANDARD TIME INDICATED

RECEIVED AT

LAWRENCE

11 55 AM

TELEPHONE YOUR TELEGRAMS
TO POSTAL TELEGRAPH

Postal Telegraph

Mackay Radio

Commercial Cables



All America Cables

Canadian Pacific Telegraphs

THIS IS A FULL RATE TELEGRAM, CABLE-
GRAM OR RADIOGRAM UNLESS OTHERWISE
INDICATED BY SYMBOL IN THE PREAMBLE
OR IN THE ADDRESS OF THE MESSAGE.
SYMBOLS DESIGNATING SERVICE SELECTED
ARE OUTLINED IN THE COMPANY'S TARIFFS
ON HAND AT EACH OFFICE AND ON FILE WITH
REGULATORY AUTHORITIES.

Form 16 Dbl

1 KA SH DPR WICHITA KANS JAN 25 9 42 AM

DR F C ALLEN

KANSAS UNIVERSITY LAWRENCE KANSAS

PLEASE RUSH ME SOME QUOTES ON WHY YOU THINK ENGLEMAN IS SCORING
BETTER THIS YEAR SEND DAY PRESS RATE COLLECT REGARDS

JACK COPELAND

January 24, 1941

Mr. A.J. Gebert
Director of Athletics
University of Wichita
Wichita, Kansas

Dear Mr. Gebert:

I was just checking up on our officials for our game in Wichita on February 3.

As I recall, we definitely agreed on Don Elser, Hinshaw, O'Sullivan and someone else in that order, was it not? I wonder just whom you have definitely engaged?

Please wire or write me at your earliest convenience.

Sincerely yours,

Director of Physical Education and Recreation
Varsity Basketball Coach

FCA:lg

January 24, 1941

Mr. Wm. Hennigh
Basketball Coach
Wichita University
Wichita, Kansas

Dear Bill:

Enclosed is a copy of a letter I have written to Al Gebert regarding officials for our game in Wichita on February 3.

Will you please check up on this at once and let me hear from you.

Thanking you, I am,

Sincerely yours,

Director of Physical Education and Recreation
Varsity Basketball Coach

FCA:ig
Enc.

WESTERN UNION

January 29, 1941

Jack Copeland
Sports Editor
Wichita Beacon
Wichita, Kansas

KINDLY WIRE TYPE OF LEATHER STITCHED BALL USED

FEBRUARY 3

Regards

F.C. Allen

WESTERN UNION

Jan. 30, 1941

Coach Wm. Hennigh
Wichita University
Wichita, Kansas

PLEASE WIRE COLOR SHIRTS WICHITA WILL WEAR FEBRUARY 3

Forrest C. Allen

January 31, 1941

Mr. Frank L. Ripple
Manager, Allis Hotel
Wichita, Kansas

Dear Mr. Ripple:

This is to advise you that there will be
19 or 20 in our basketball group.

We are leaving Lawrence on the Streamliner
at 8:42 Sunday morning, and will arrive in Wichita
just before noon.

Sincerely yours,

Director of Physical Education and Recreation
Varsity Basketball Coach

FCA:lg

February 1, 1941

Mr. Frank L. Ripple
Manager, Allis Hotel
Wichita, Kansas

Dear Mr. Ripple:

This is to advise you that we are
leaving Lawrence on the Santa Fe at 10:02
Sunday morning and arriving in Wichita at
2:35 P.M.

Sincerely yours,

Director of Physical Education and Recreation
Varsity Basketball Coach

FCA:lg

WESTERN UNION

Jan. 31, 1941

COACH BILL HENNIGH
WICHITA UNIVERSITY
WICHITA, KANSAS

~~WE~~ PREFER ANY LEATHER STITCHED BALL OVER ANY MOLDED BALL.

PLEASE REPLY WESTERN UNION BRAND AND TYPE OF BALL.

KANSAS WILL WEAR WHITE.

Forrest C. Allen