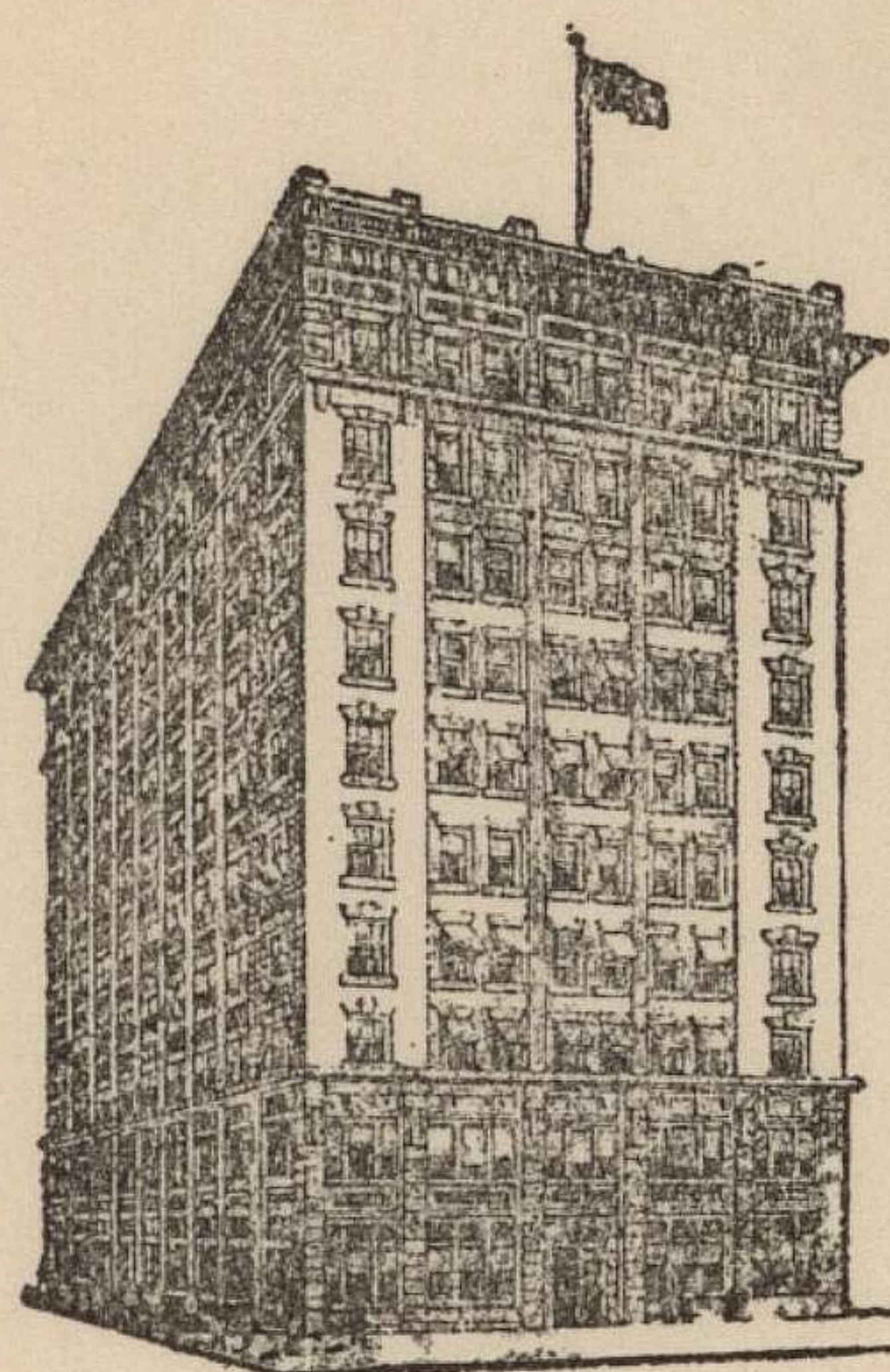


LARGEST DAILY AND SUNDAY CIRCULATION  
IN THE STATE OF KANSAS

ASSOCIATED PRESS  
UNITED PRESS  
INTERNATIONAL NEWS SERVICE



HOME OF THE WICHITA BEACON

# The Wichita Beacon

EVENING AND SUNDAY MORNING  
M. M. LEVAND, PRESIDENT

WICHITA, KANSAS

January 17, 1941

Dr. F. C. Allen  
University of Kansas  
Lawrence, Kansas

Dear Phog:

I was happy to hear from you and to learn the boys looked much better against Iowa State than they did against Oklahoma. Frankly, I was disappointed down there, but I was also aware that the team wasn't mentally fit for the opening game. I felt reasonably certain that they would come along for both Iowa State and Missouri.

What's wrong with Engleman? I see Missouri held him down to 25 points!

I called Mr. Frank Ripple, manager of the Allis, relative to your team stopping there at the \$1.50 rate. At first, he wasn't so hot on the idea, but I reminded him of the previous agreement and he admitted that it was only the proper thing to do. So please write him as soon as possible to make final arrangements. In view of the fact that your "B" team is also playing I told him that you would most likely want reservations for 20. Your letter did not state the number of men who would make the trip.

I am extremely sorry that Dr. Neff called wanting to cancel the game. The very thought of such a procedure was most disgusting. I know he has been around intercollegiate athletics for a long time and should have known better.

I'll admit Wichita hasn't had such a hot season, but the Shockers aren't the first basketball team to collapse. It may be that they will hit a winning stride before long. Anyway, I know the game will draw plenty of people and I am certain that both institutions will make money. We have some elaborate publicity programs planned and regardless of whether the other paper cooperates we will put over the show for you.