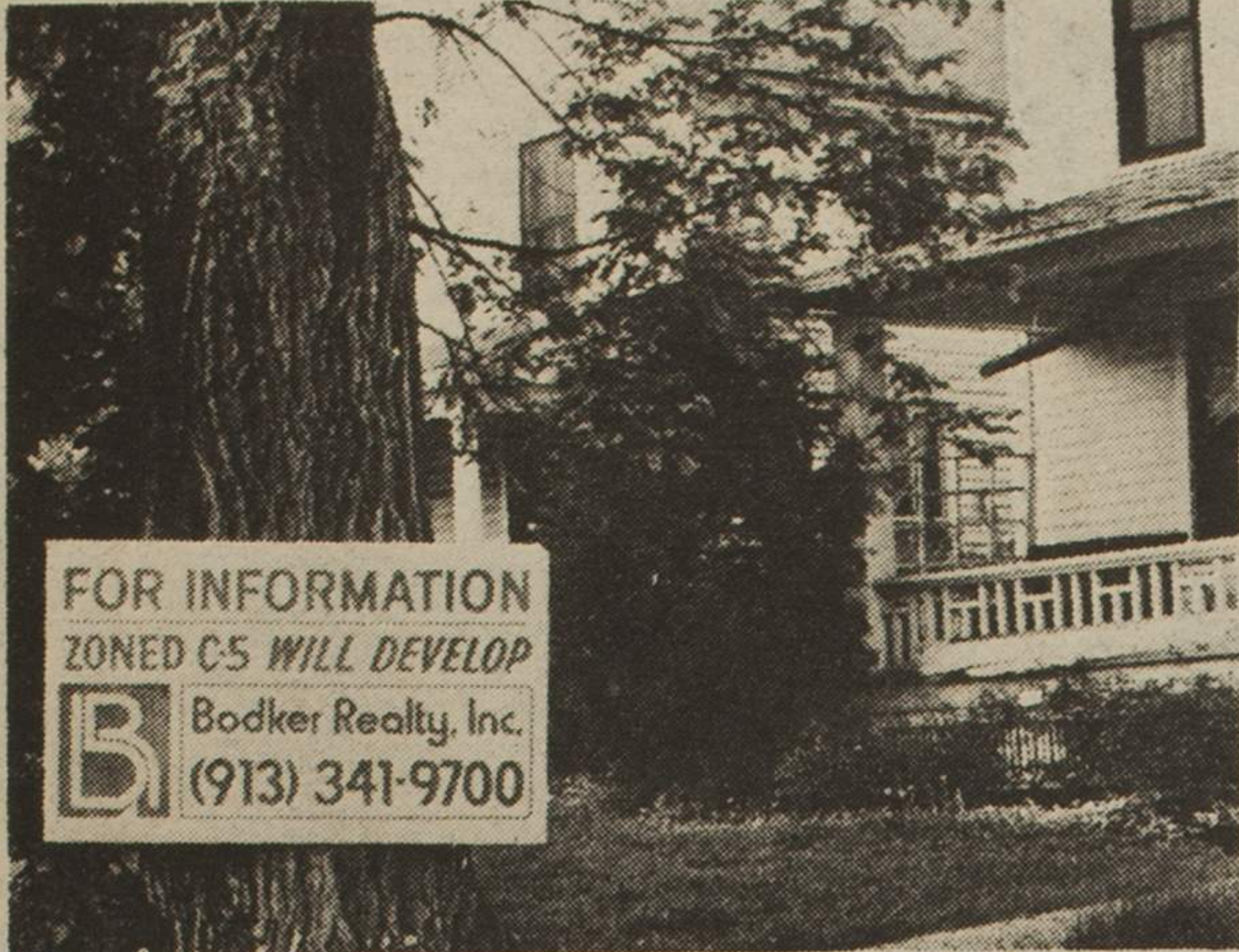


# IN WORDS and PICTURES

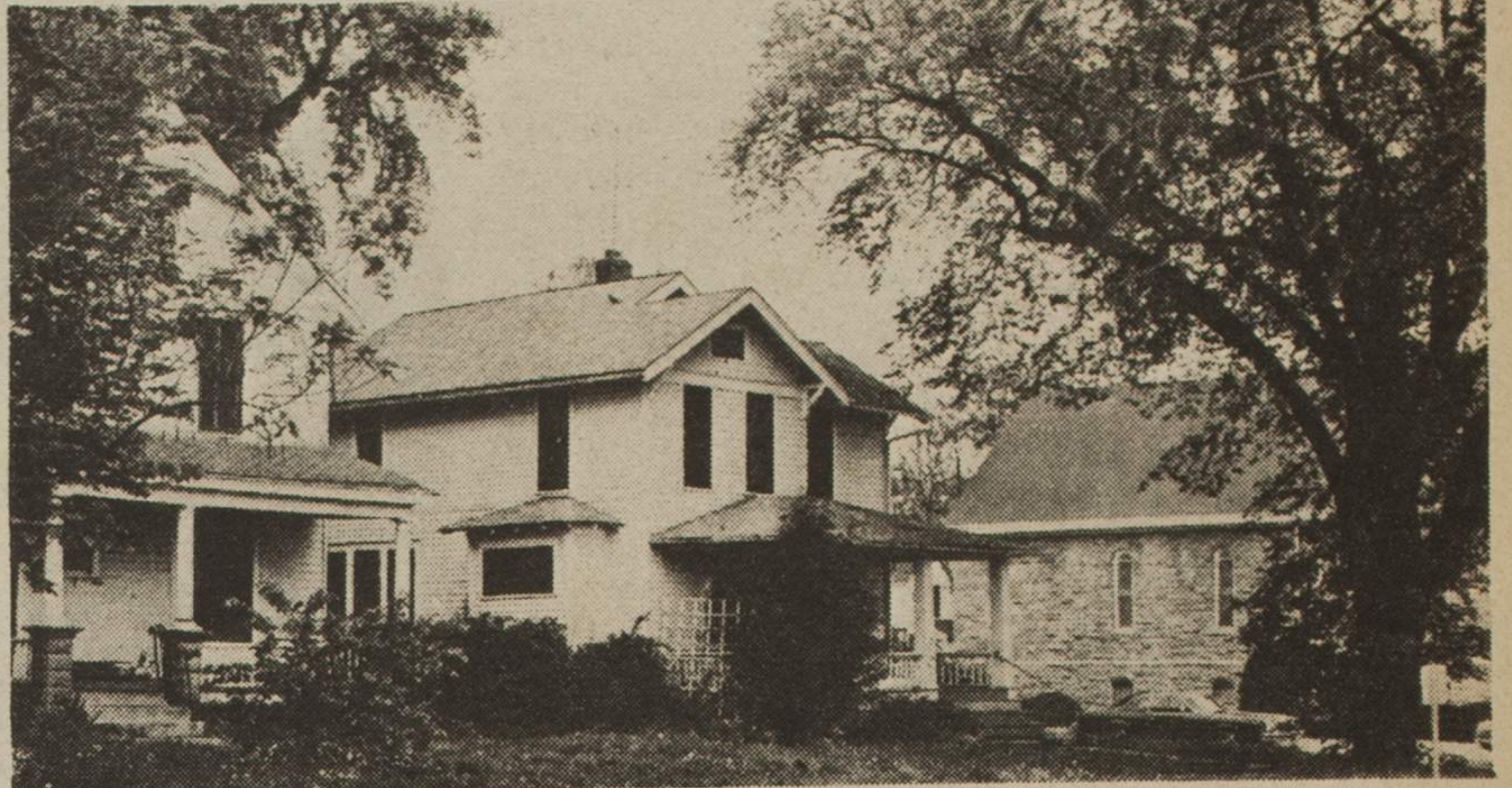
# BURGER BELT BLUES

TEXT & PHOTOS  
by Mark Kaplan

WEBSTERS DEFINES A BURGER BELT AS "A STREET OR HIGHWAY LINED, OR IN THE PROCESS OF BEING LINED BY FAST FOOD (J)OINTS, DISCOS, GAS PUMPS, LIQUOR STORES, SHOPPING CENTERS AND THEIR APPERTENENCES, PLACED MORE OR LESS IN A ROW." CITY AND BUSINESS INTERESTS HERE ARE BUSILY CREATING TWO NEW ONES--3 BLOCKS APART.



A typical pair of lots at the corner of 9th and Ohio Streets anxiously await a buyer and a bull-dozer. Though harboring two good residential dwellings, the City has chosen to condemn the homes to a future of certain extinction--thru the zoning ordinance placing the buildings in a long, narrow commercial "strip" lining Ninth Street.



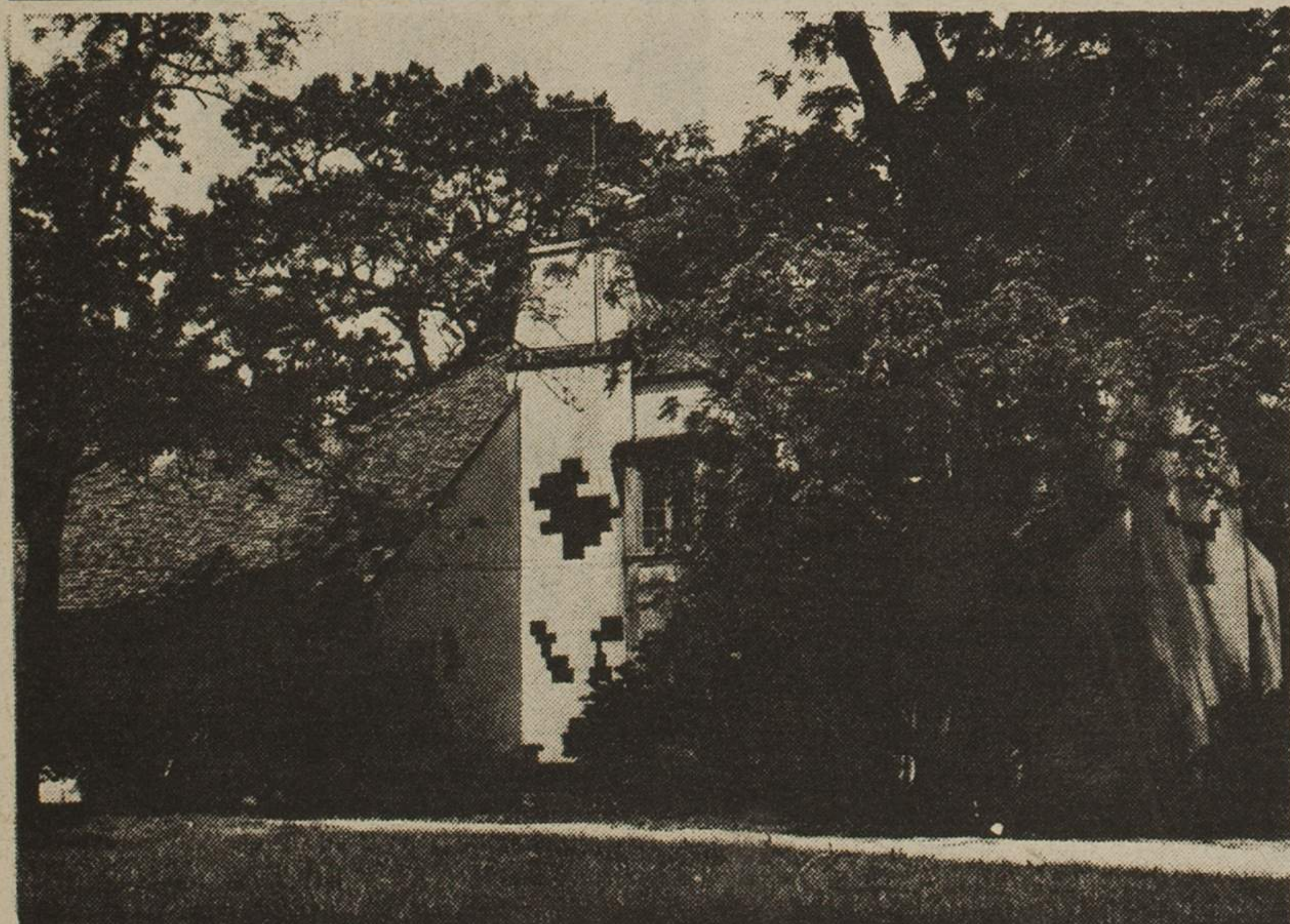
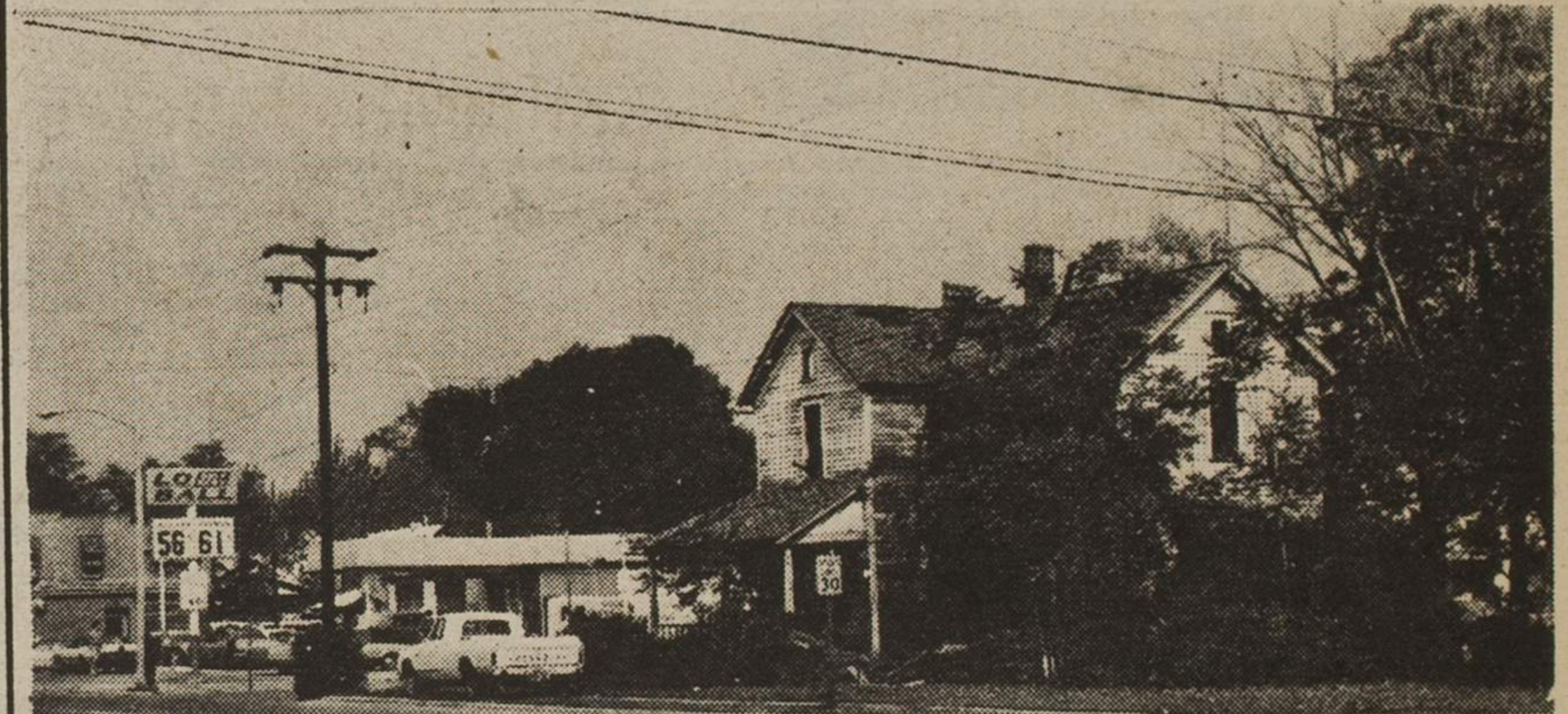
This beautiful and historic home is located on Sixth Street, across from the Pinckney elementary school. Though seemingly safe for the time-being, the extension of present trends and policies could lead, innocently enough, to its destruction.



LEFT--The now-famous disquette at 9th and Mississipi, blessed by the City, with about 10% of the necessary parking facilities.

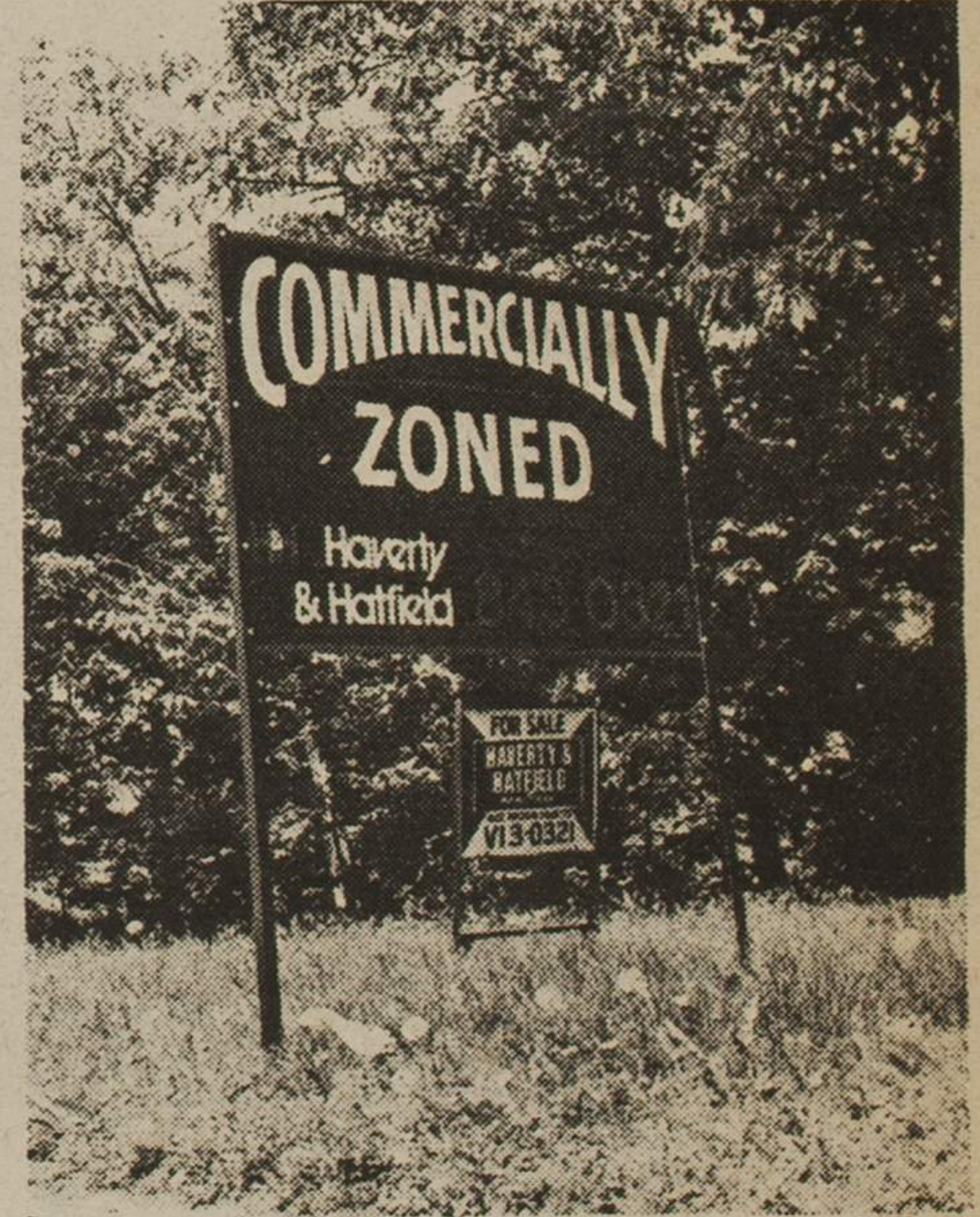


BELOW--An old frame dwelling prepared to meet its' maker. A particular concern to area residents is the fate of the property to the rear--where commercial zoning extends for an additional 150 feet.



The home of former Mayor John Emick still nestles beneath the remains of a once rather large grove of elm, walnut and hackberry, just east of the Dillons store on west Sixth. Recently rezoned 'commercial,' and placed on the open real estate market, Pinckney neighborhood residents now fear for the sanctity of their streets and homes.

Other neighborhoods may well do the same--if more thoughtful and rational planning principles are not soon implimented by our city government.



## PUBLIC NOTICE



The PUBLIC NOTICE is published monthly in cooperation with the Community Mercantile Food Cooperative and People's Energy Project. Our office is located on the top floor of the Stubbs Building, 1101 1/2 Mass., Lawrence Kansas, 66044. Call 842-5657. PUBLIC NOTICE meetings are held every first and third Mondays at 7:30 pm.

PEOPLE CONTRIBUTING TO THIS ISSUE: DIANE LUBER, SUSIE HANNA, LAURIE SCHWARM, MARK KAPLAN, KATE DUFFY, PAUL HUGHES, CHUCK MAGERL, STEVE OTTO, DON ZAVOLO, BOB GRUBBS, BARRY MC MURPHY, JANE NICHOLS, KATHRYN CLARK, RICHARD LINKER, JOHN LUND-MARK, MARCIA FOSTER, HELENE PESCHE, DOROTHY SPRINGER, MARY ANN OTTO, WILBUR RAY, BARRY SHALINSKY, SUE BRYANT, DICK DUNHAUPT, JUDY KROEGER, JOHN NAUGHTIN, JIM SCHEURICH, JOLENE BABYAK, DAVID HANN, DICK COWDEN, JANETTE GIBSON, DAYN LELAN, GREG BASHAW, AND THE PEP PEOPLE. SPECIAL THANKS TO WHITES GOODS, 916 MASS. FOR DONATING A TYPEWRITER BALL.

The editing committee of PUBLIC NOTICE reads and discusses all articles and letters submitted for publication. We want to be a reader-writer paper, but due to limited space, we are forced to select what we consider are the most timely, concise, interesting, distinctive, informative and imaginative articles about our community. PUBLIC NOTICE will try to print all letters. Letters must be signed. Names will be withheld from publication if requested. Due to our limited space, lengthy letters may have to be edited. We will make every effort to preserve the substance and style of all articles and letters. Want to help? Join us at PUBLIC NOTICE. 1101 1/2 Mass. or call 842-5657.