

East Lawrence Neighborhood News



Winter Blues

By Kate Duffy and Barbara Thompson - Penn House

Last winter was so cold that many folks on low and fixed incomes found themselves in trouble with the Gas Company. Bills ran so high and accumulated so fast, that many people couldn't keep up with them.

If you find yourself in this predicament this winter, there are a couple of things you can do:

1. Go down to the Gas Company office at 733 Mass. and talk to the Credit Manager about your bill. They will accept partial payments but you need to work out a deal with them. After working out some deal, make sure you make the monthly payments so they know you're sincere about paying the bill.

2. For financial assistance, you may apply to the Emergency Service Council through Penn House, ECKAN, Salvation Army, or Ballard. An ESC rep from each organization will take your application to the weekly meeting where the group votes on it. ESC exists on donations from groups and individuals.

3. S.R.S (Welfare office) has money for people who have received cut-off notices. They have a special formula for the income guidelines that you must fall under to qualify for assistance. They will pay up to 3 months back bills. You can use this service once a year. Give them a call at 843-6511 for more information.



East Lawrence is a special community where many of us live and work. East Lawrence people have many interesting ideas and talents to share with each other and the rest of the town. Do you write poetry? Draw? Have any good jokes or stories to tell? Know a good recipe? Well, PUBLIC NOTICE would like to print your contributions on this page every month. You can either mail it or drop it by the PN office at 1101 1/2 Mass. around the 1st of each month. If you would like someone to pick it up, call us at 842-5657 or 841-5080.

E.L.I.A.

What's the East Lawrence Improvement Association?

It's a group of East Lawrence residents who meet each month to discuss and take action on neighborhood projects such as tree planting, sidewalk repair, housing fix-up, including weatherization, roof repair and painting. It's a way for neighbors to meet neighbors, and an initiator of social events such as the famous East Lawrence picnic.

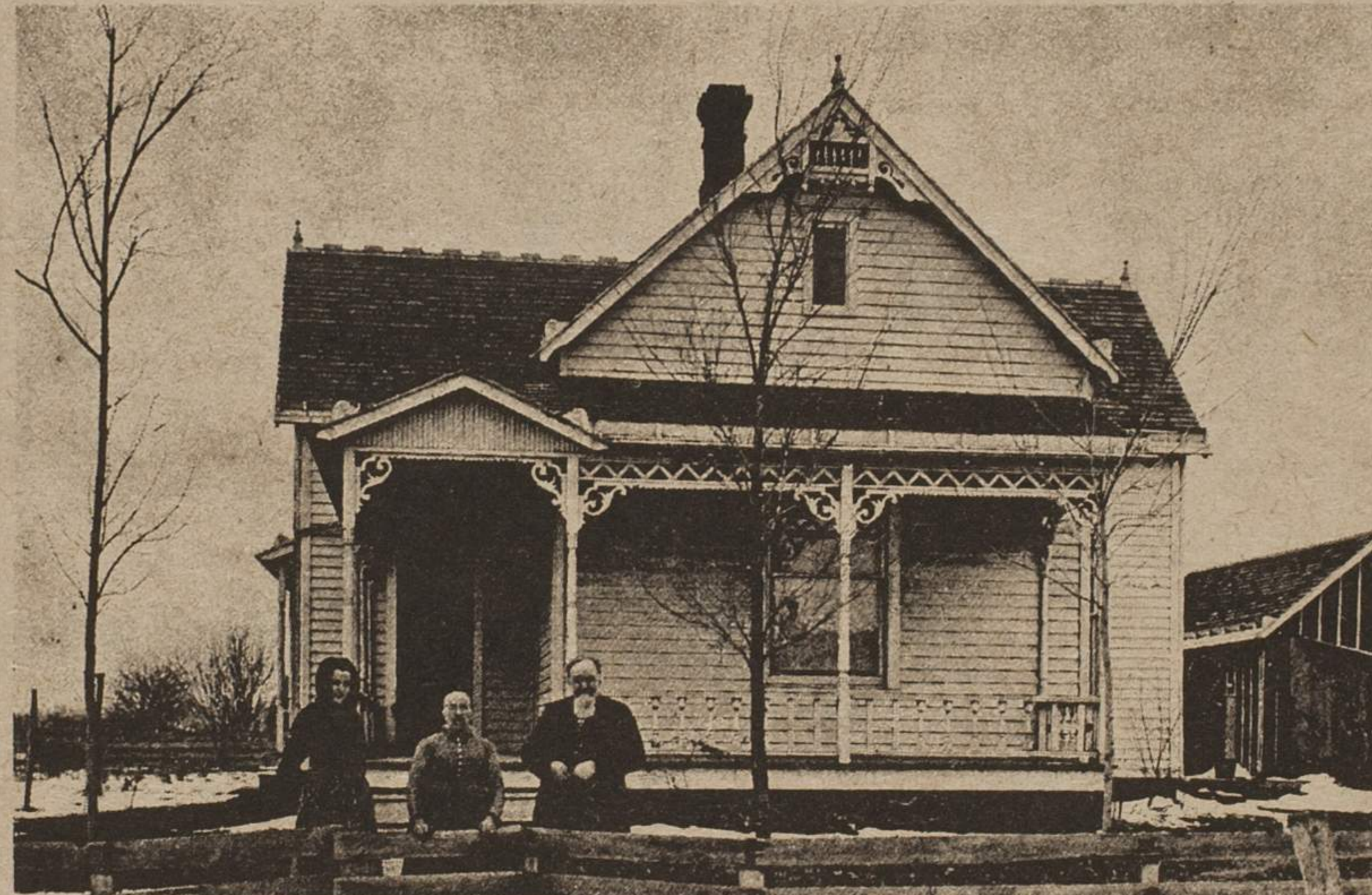
You are welcome to join if you live or own property within the neighborhood's official boundaries of 15th Street to the south, the Santa Fe line to the east, the river to the north and Massachusetts to the west. Memberships are \$1 per year.

The association meets the second Monday of each month at 7:30 pm in the recreation center, 10th and Delaware.

Older Gal

By Gertrude Shanafelt
1024 Pennsylvania

Lord help me to grow old gracefully
Not to be a troublesome bore,
To know life and its score
Enjoy my friends, in the hope
That they can enjoy me more.



Disappointment

By Ida Lyons
Formerly of 1012 Rhode Island

Saucy little squirrel,
Scampering 'cross my yard;
Busy, seeking walnuts
For his winter hoard.

Sorry, little fellow,
I fear that you'll find none,
For a man was here last summer,
And your walnut tree is gone.

Consumers Aid

DOWNTOWN
901 Kentucky
Suite 305 B

M-F 9:30 - 12:00
1:00 - 4:30

THURS. til 8 p.m.

SAT. 8:30 til NOON

CAMPUS
KS. UNION

M-F 9:30 - 12:30
1:30 - 4:30

843 4608

864 3963

sister kettle cafe

NATURAL FOODS RESTAURANT

Collectively Owned & Operated
Gourmet Vegetarian Foods

14th & Massachusetts

LUNCHEON SPECIALS \$1 DINNER SPECIAL SERVED AT SIX

Wednesday thru Sunday 10 am to 9 pm Closed Monday and Tuesday



Get it done right
restoration repair
touchups
&
refinishing

841-6182

415 N. 2nd

THE FRAME UP

14 EAST 8th STREET
LAWRENCE, KANSAS 66044

Custom Framing Metal Frame Kits & Clips

Gallery Posters & Reproductions

Hours 12-5 Closed Mondays