

Kansans Rally Against Nuke

photos by Christine Crider

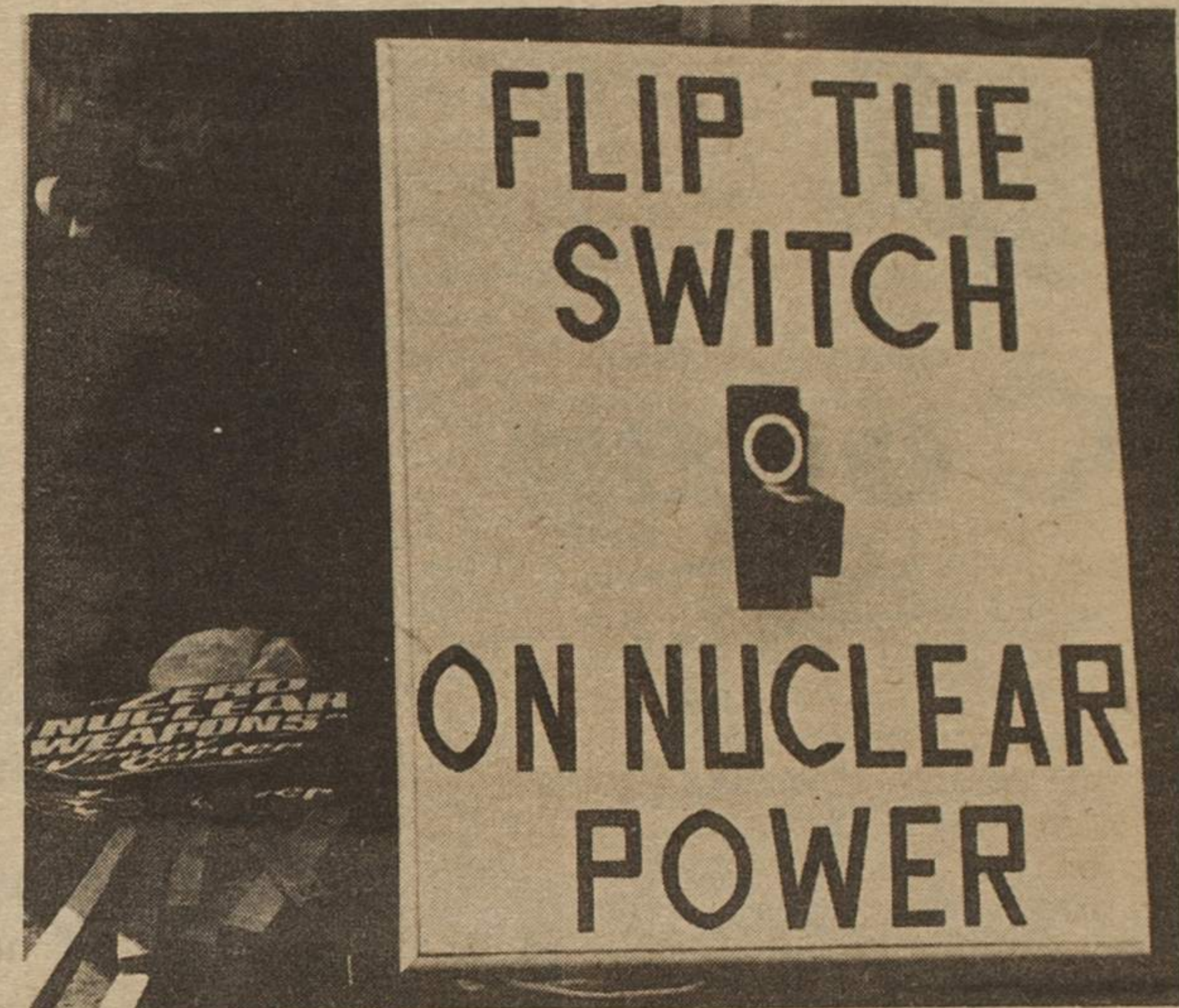
An estimated 700 people gathered at John Redmond Reservoir, June 24. They rallied to protest the construction of the Wolf Creek nuclear power plant near Burlington, Kansas.

Members of anti-nuclear groups from across the state met to exchange information and form contacts. Among the groups represented were Radioactive Free Kansas of Lawrence, People's Energy Project of Kansas City, and Wolf Creek Opposition of Burlington.


Speakers included Reverend Tony Blaufus, Sen. John Simpson, R-Salina, and Edith Lange. Several musicians also performed.

After most of the speakers, the demonstrators gathered buckets, bottles, and cups and marched down to the reservoir's edge. They scooped up water and carried it back with them to symbolize returning the resources to the people. Most of them felt the water could be used in better ways than in cooling a nuclear power plant.

To continue this action, anti-nuclear citizens advocate turning off the electricity every Sunday evening from 9 to 9:05 pm. Doing without electricity for five minutes will remind everyone what will happen to our society if we use up our existing energy sources without developing alternatives.



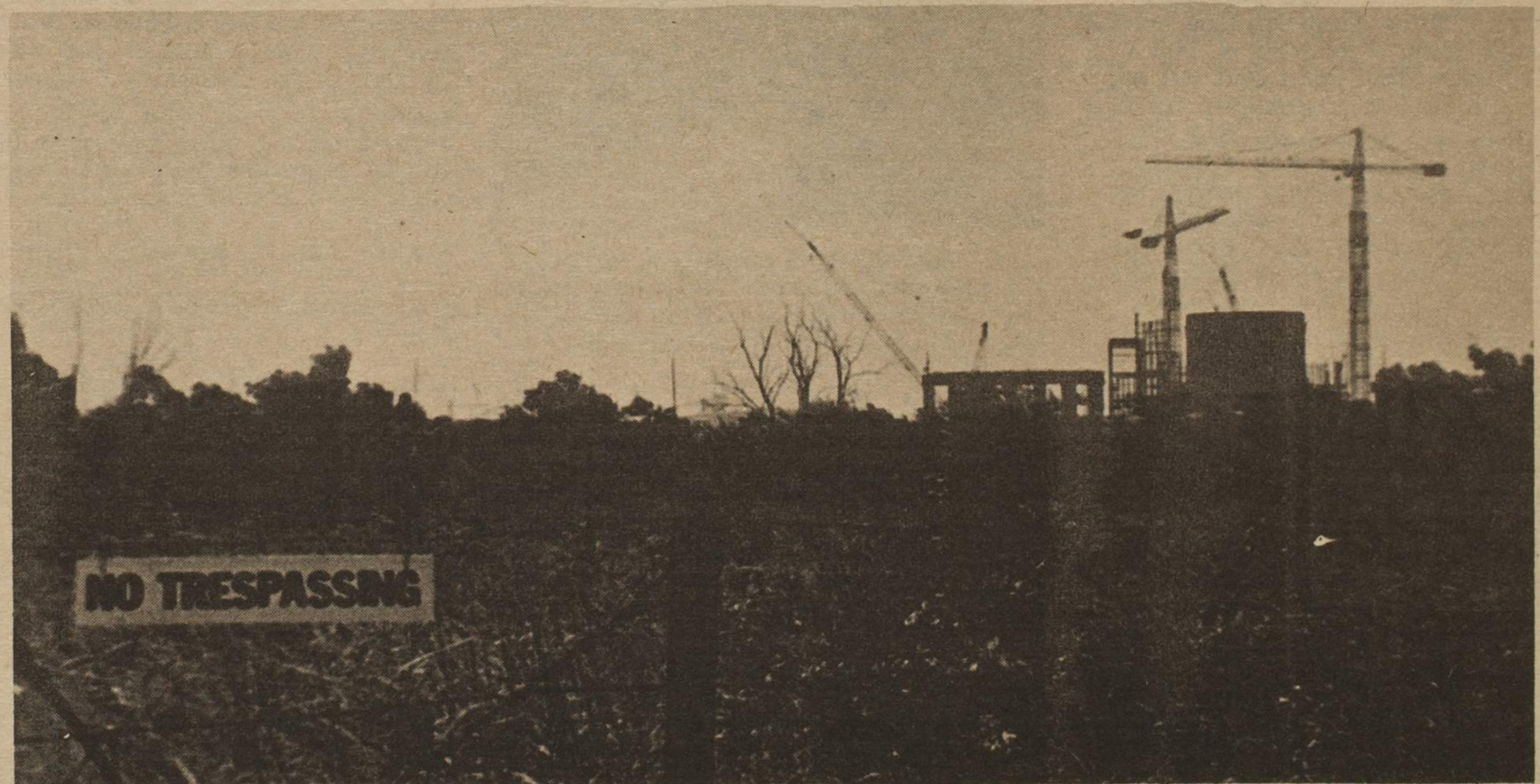
Shooting Gallery



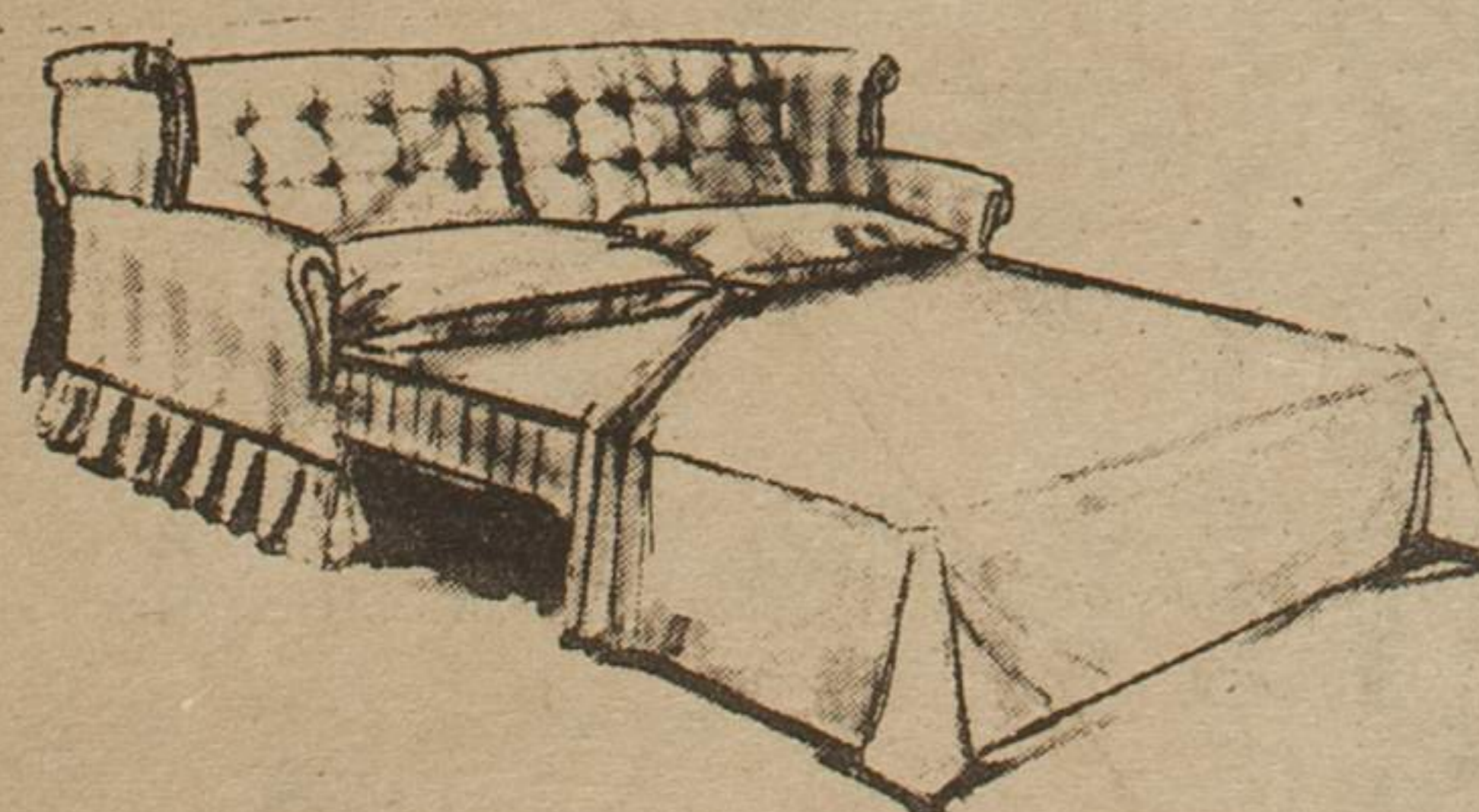
photography

Casual Portraits
Weddings

118 E. 8 841-2369



O.K. Furniture & Appliance



KANSAS CITY'S LARGEST SELECTION OF NEW AND USED FURNITURE

BEDS, CHESTS, SOFAS, CHAIRS, DINETTES, STOVES, REFRIGERATORS

CASH OR TERMS

2522 Truman Rd.

816 231-6880

