

THE CREDIT UNION

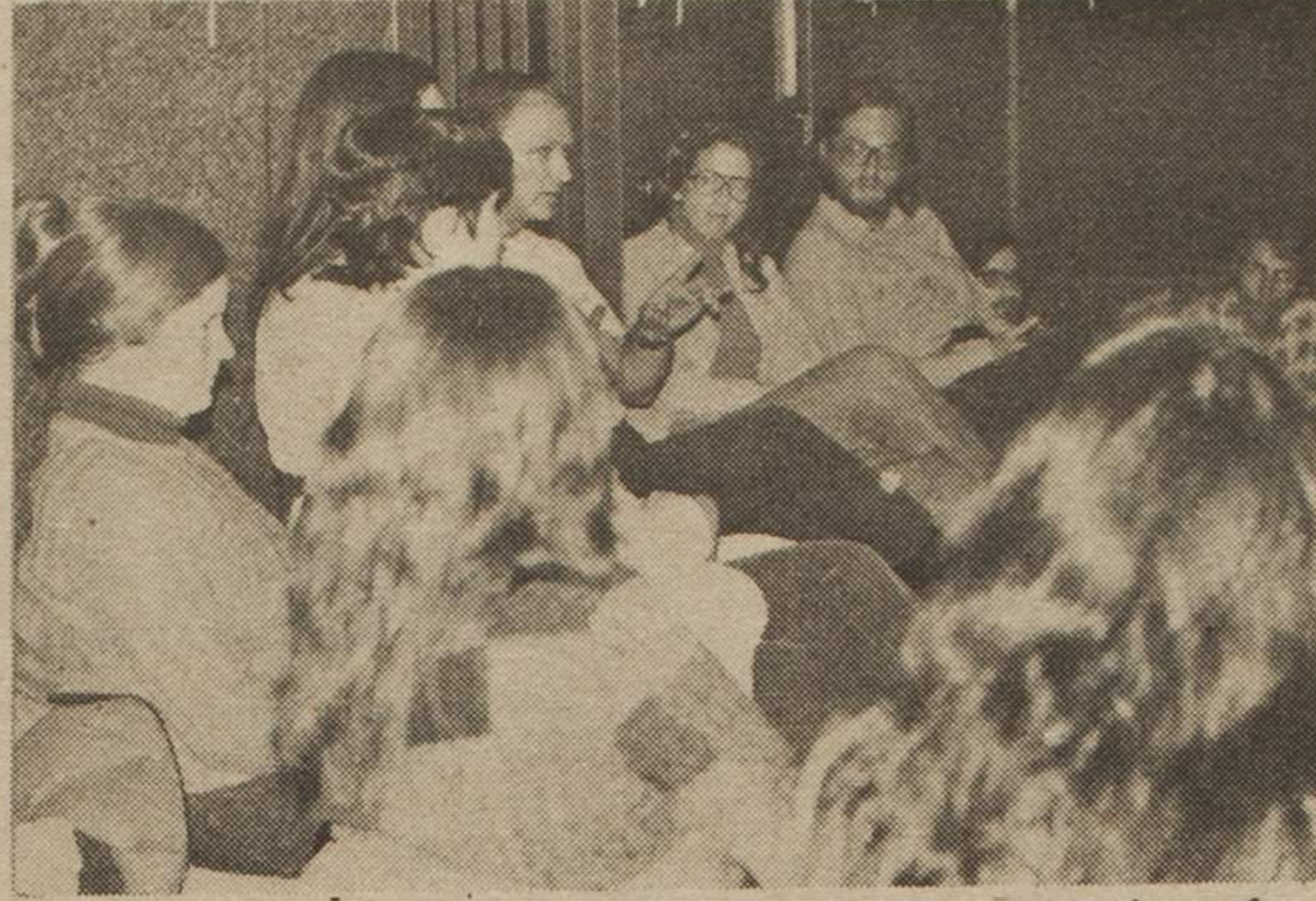


Nearly 30 people attended a lively meeting of the Community Mercantile Credit Union Thursday evening, November 11. Clustered in a meeting room at the Public Library, we discussed various aspects of our first year of operation and pondered suggestions for the near future.

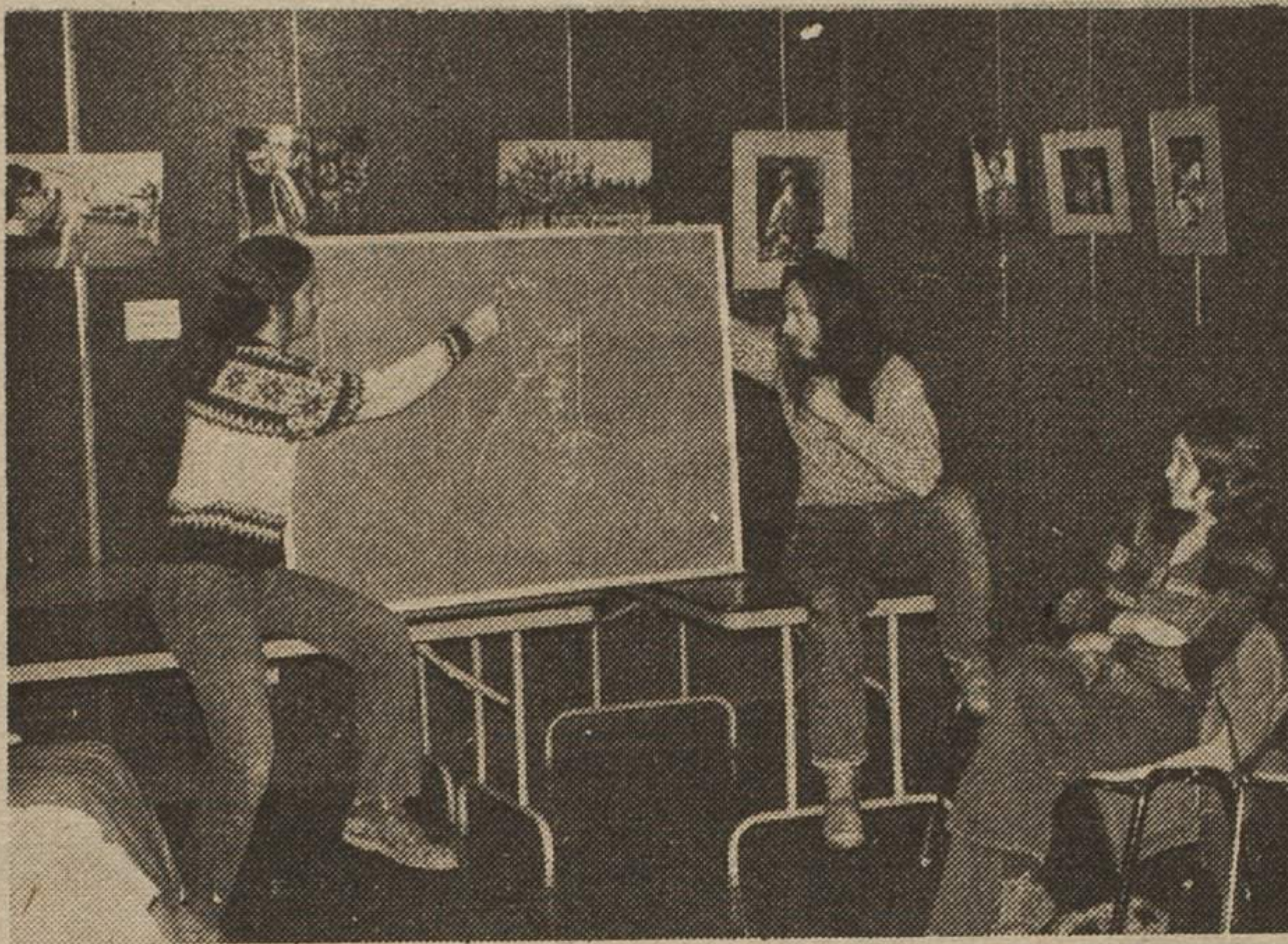
Our guest for the evening, Bob Nixon, manager of the Lawrence Government Service Credit Union, kept the meeting well paced, and kept us well informed as he interjected comments on the status of credit unions in Kansas. Bob was also generous in his praise of the hard working commitment of officers and members that has brought us so far in our first year.

And as Dick Dunhaupt recounted the credit union's history, ten months laying the groundwork, and almost one year of member service, we realized the impressive fact of the work we've done. We've solidly shaped a system of financial co-operation based on social needs, not temporary monetary profits. This is the basis of the radical populism that brought credit unions to Kansas in the 1930's and has fostered them to this day. The spirit of our credit union was shown in the committee reports and the interest expressed by members by their comments and questions.

With the meeting drawing to a close, dividends were discussed and volunteers were heard for committee positions. Paul Johnson, Marilyn Roy, Kathy McGee, Judy Bailey, and Rob Bailey were approved as new workers at the end of the two hour meeting. Through the informal presentations and general discussion, a greater feel for the value of the credit union was attained.



Humor, informative points, and a presentation of dividend computation fill a credit union evening.



Cash Stash

By Pat Sullivan

Certainly one of the main ideas behind the formation of the Community Mercantile Credit Union was to help finance cooperative and collective projects. So far, Sister Kettle Cafe has been the only group to take advantage of this service.

We've seen that cooperatives and collectives can work. The Mercantile Food Coop and the Credit Union are steadily growing, and Sister Kettle and Kaw Valley Craft Exchange are now getting off the ground. It would be great to see an individual or group of people start working on another cooperative project for Lawrence.

The possibilities are endless (bike repair, housing, book store...) and this would not only expand the cooperative network but it would supply new energy and new people to a community that is suffering from existing projects that have only a handful of people involved.

If you are committed to the cooperative principle but don't have the time to work on a new or existing project, you can help by depositing your money and starting a regular savings habit with the Credit Union. It's a good deal. You have money put aside for emergencies, a trip or whatever, and the Credit Union can use your money to loan out money to individuals in the community. We can only lend money on the shares we have, and right now, we are very close to our loan limit. Tell people about the Credit Union and get them to open up savings accounts. With your help, we can do many positive things in Lawrence.

COMMUNITY MERCANTILE CREDIT UNION
 1101 1/2 Mass. 842-5657
 Hours:
 Mon. Tues. Wed. Thur. Fri. Sat.
 --- 9-12 5-8 2-6 2-6 10-1
 3-6
 Your account insured to \$40,000

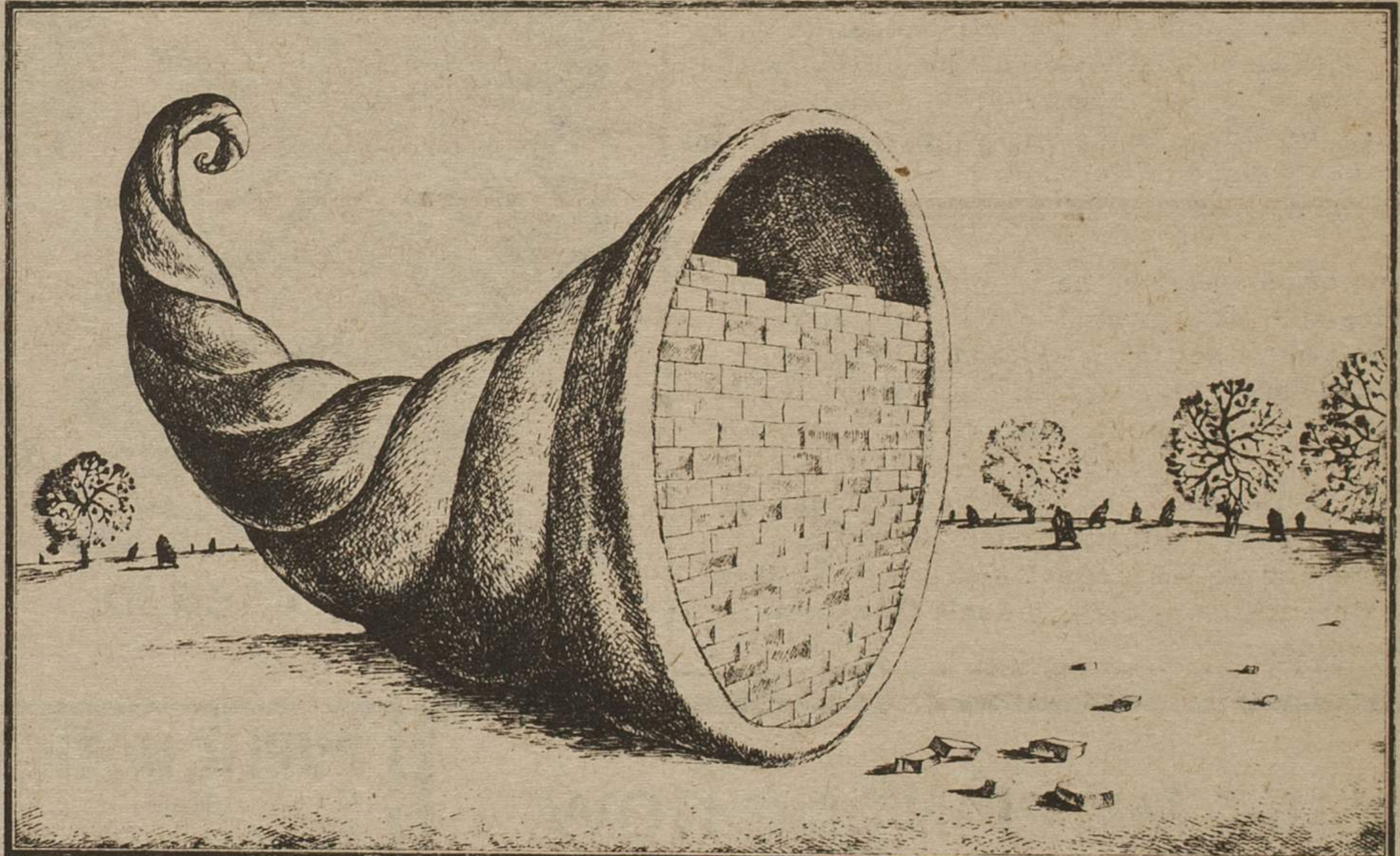
"I'M A SINNER"

By Boyd Evans

Take me for a ride in your screaming rolling
 thunder machine,
 Take me to the place I've seen in dreams,
 We are dancing in the light of
 Our hopes that it's you we've seen,

I have freaked when I've heard your late night
 gut-shaking call,
 To be a Frog (pig if you wish)
 To walk and crawl,
 To be the ones who don't know at all.

"Has anyone seen my nose?"
 Snorting cocaine is thought to be a gas,
 But sometimes I wish I could just fucking relax,
 Never got so jumpy so much,
 Hare Krishna, Hare Hare, Am I getting
 out of touch?



Eugene Mihaesco



Jazz Jazz Jazz
 only at
Paul Gray's
Jazz Place

Beer, peanuts,
popcorn, jazz

926 Mass. Opens at 8:00
 Music at 9:00

Call 843-8575
 or 842-9458
 for reservations

ARE TWINKIES DIGGING AMERICANS AN EARLY GRAVE?

(CPF) Apparently, millions of Americans are hooked on Twinkies. Produced by workers at Hostess (owned by International Telephone and Telegraph), 700 million or more Twinkies are being gobbed down a year. One Twinkie plant in New Jersey employs 19 workers to operate a giant 190-foot oven. The oven turns out 50,000 Twinkies an hour or 3 million a week. Consumer groups condemn the health value of Twinkies, which are made mainly of sugar, refined flour, shortening and chemicals. Nevertheless, the Twinkie craze is growing. According to *Forrowed Times*, an annual international Twinkie festival is held in Rochester Minnesota featuring a Twinkie derby where contestants equip the cakes with toothpick axels and wheels. Perhaps the derby is a mobile metaphor for the "road to ruin" your body embarks upon when you feed it Twinkies.


El Matador

The finest in Mexican food by the Reyes Family

open evenings
Tues. thru Fri.
5:30 - 10:15
Sun. 4 - 8
Mon. 5:30 - 8:30
446 Locust


SHOOTING GALLERY

PHOTOGRAPHY



WE SPECIALIZE IN CREATIVE PORTRAITS TAKEN IN NATURAL SURROUNDINGS

ALSO: PORTRAITS WEDDINGS COPY WORK PASSPORTS



118 E. 8 841-2369