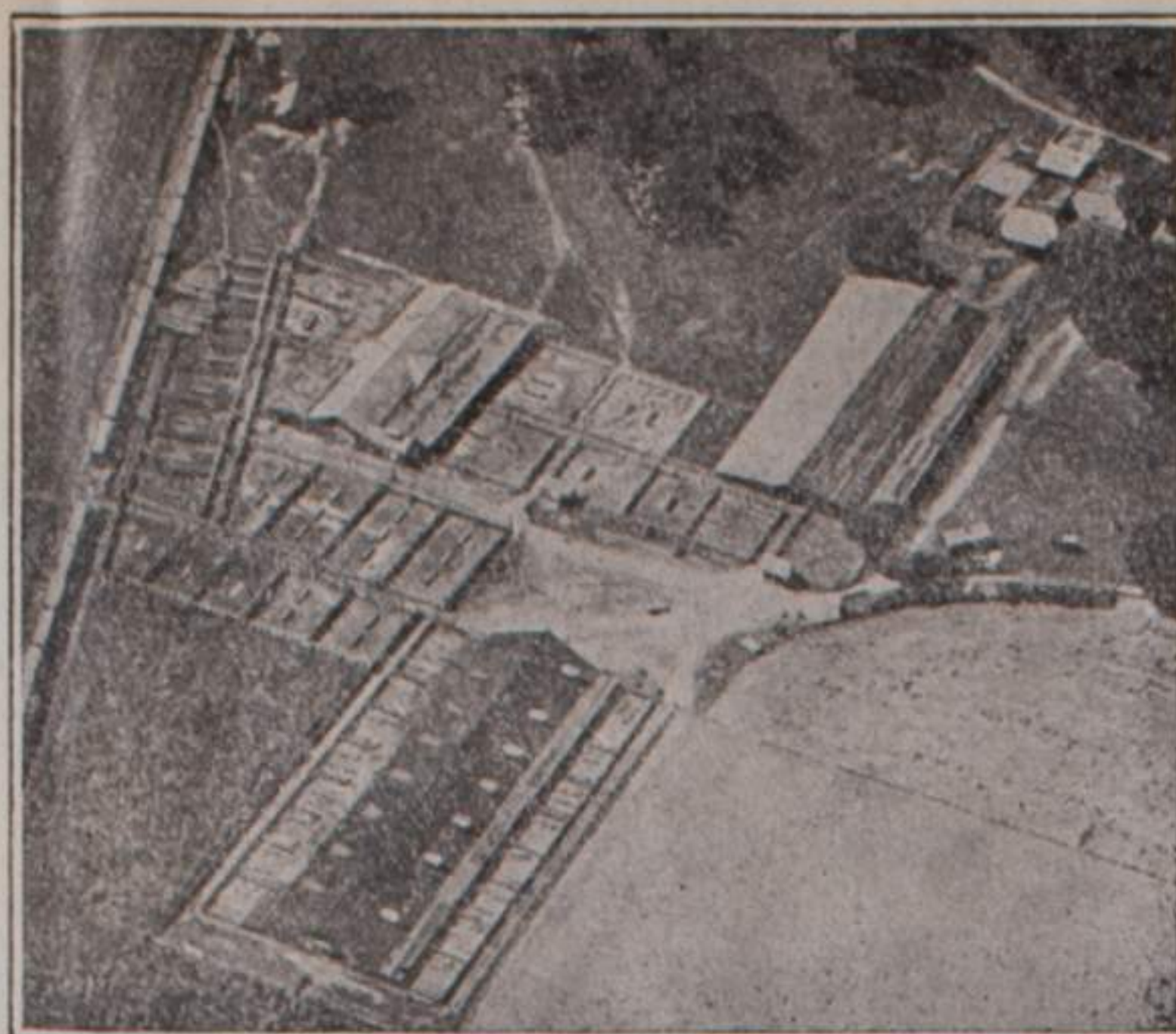


KANSAS CITY OFFICE
446 LIVE STOCK EXCHANGE
TELEPHONE MAIN 5572

JOHN S. TOUGH, OWNER



FOUR LARGE BARNs FOR SHEEP AND CATTLE.
LARGE PASTURES FOR SHEEP GRAZING.
PURE WATER PIPED THROUGHOUT BARNs,
OUTSIDE PENS AND PASTURES.
ENTIRE YARDS LIGHTED ELECTRICALLY.
ELECTRIC PASSENGER LINE DIRECT TO KANSAS
CITY STOCK YARDS.

TELEPHONES
YARDS 1390 HOUSE 1385

BISMARCK GROVE STOCK YARDS

(ON MAIN LINE OF UNION PACIFIC RAILROAD—36 MILES WEST OF KANSAS CITY)

LAWRENCE, KANSAS

446 Live Stock Exchange,
Kansas City, Mo.

June 17, 1938.

Mr. W. C. Simons,
The Journal-World,
722 Mass. Street,
Lawrence, Kansas.

Dear Mr. Simons:

You mentioned in your office one day that you would like to have a set of the photographs of pictures of old Bismarck Grove to add to your mural decorative scheme. I have pleasure in sending such a set under separate cover by mail today, and hope they reach you safely and prove acceptable.

You will find that two of the pictures (numbered on the back Nos. 1 & 2) can to advantage be joined to form one view.

With kind personal regards from Mr. Tough and myself,
I remain

Cordially,

R. Learmonth