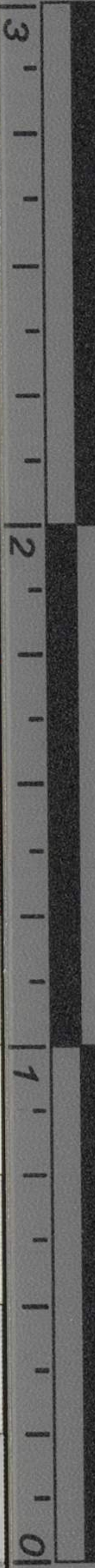




inches



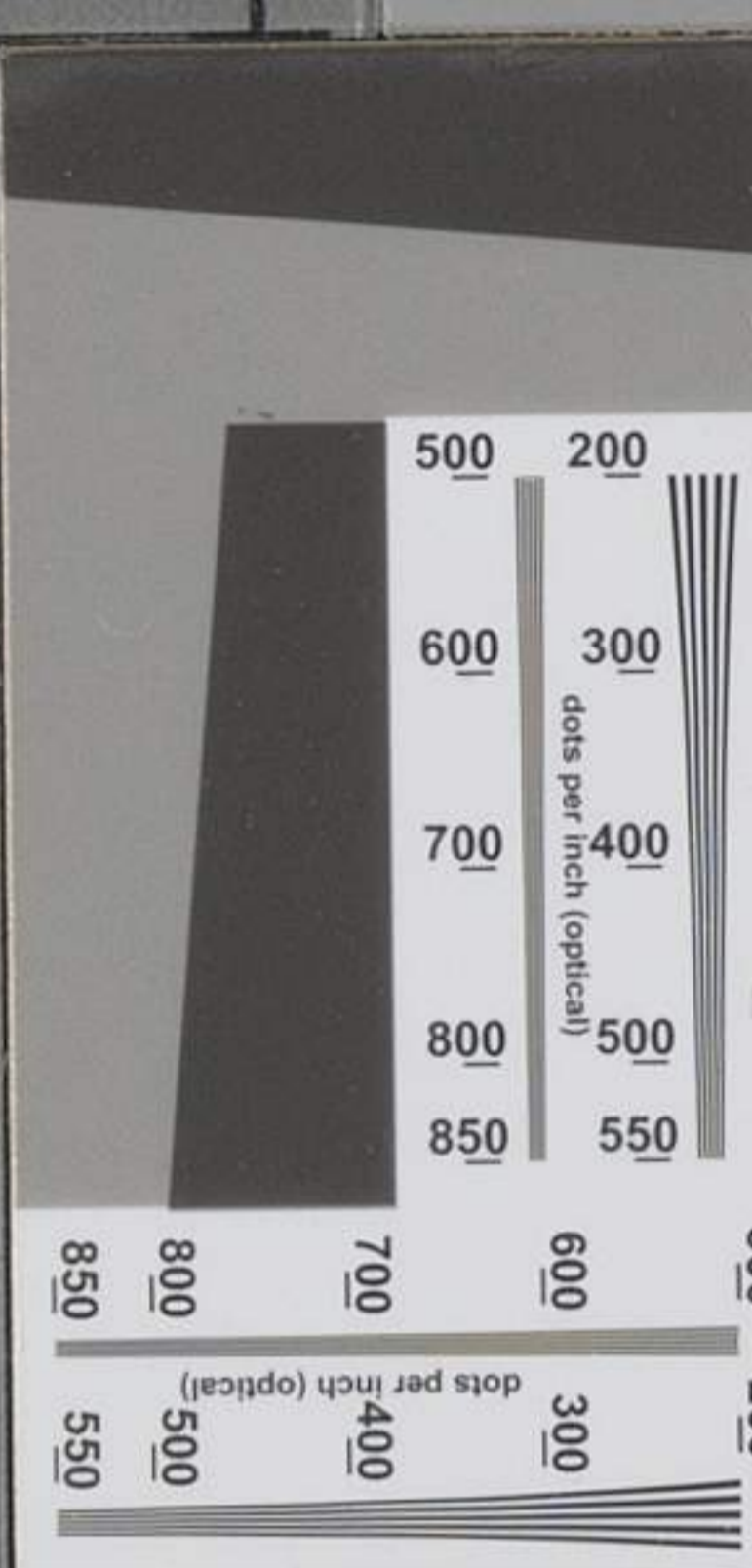
centimeters



	1	2	3	4	5	6	7	8	9	10	11	12	13	14	15
L*	38.76	65.15	49.61	43.54	55.52	70.42	63.13	40.08	51.75	95.34	92.09	86.92	82.37	72.17	62.32
a*	13.81	19.21	-4.20	-12.89	8.78	-32.39	35.43	10.25	47.36	-0.90	-0.92	-1.12	-1.12	-1.05	-1.10
b*	14.69	17.92	-21.33	22.66	-24.31	-0.48	57.84	-44.77	16.93	1.90	1.46	0.97	0.56	-0.04	-0.01

Density →

0.05 0.09 0.16 0.22 0.36 0.52



Dor Williams

	16	17	18	19	20	21	22	23	24	25	26	27	28	29	30
L*	49.61	38.89	28.60	17.97	9.50	4.33	30.32	72.50	72.10	29.51	55.60	43.48	82.02	52.85	50.86
a*	-1.29	-0.23	-1.09	0.04	0.45	0.32	22.13	-22.92	19.51	13.42	-38.46	50.74	3.28	49.90	-27.78
b*	-0.10	-0.48	0.07	0.09	0.25	-0.47	-19.02	56.08	67.85	-47.69	32.19	29.13	78.75	-12.86	-27.68

All values are batch averages

M000936

STW
 CARRIE M. WATSON n. 80'
 Class of '77
 411

(15)

Kan. Coll.

Property of
 University of Kansas
 Archives

411

D50 Illuminant, 2 degree observer

L*	a*	b*	Density
38.76	13.81	14.69	0.05
65.15	19.21	17.92	0.09
49.61	-4.20	-21.33	0.16
43.54	-12.89	22.66	0.22
55.52	8.78	-24.31	0.36
70.42	-32.39	-0.48	0.52
63.13	35.43	57.84	0.75
40.08	10.25	-44.77	0.98
51.75	47.36	16.93	1.24
95.34	-0.90	1.90	1.64
92.09	-0.92	1.46	1.96
86.92	-1.12	0.97	2.38
82.37	-1.12	0.56	
72.17	-1.05	-0.04	
62.32	-1.10	-0.01	
49.61	-1.29	-0.10	
38.89	-0.23	-0.48	
28.60	-1.09	0.07	
17.97	0.04	0.09	
9.50	0.45	0.25	
4.33	0.32	-0.47	
30.32	22.13	-19.02	
72.50	-22.92	56.08	
72.10	19.51	67.85	
29.51	13.42	-47.69	
55.60	-38.46	32.19	
43.48	50.74	29.13	
82.02	3.28	78.75	
52.85	49.90	-12.86	
50.86	-27.78	-27.68	

inches

centimeters

Dor Williams

M000936

All values are batch averages