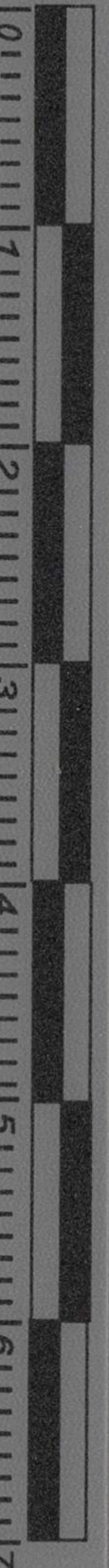
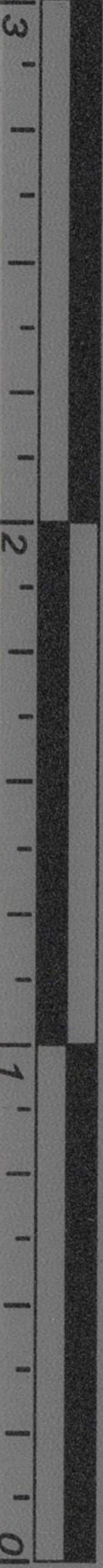




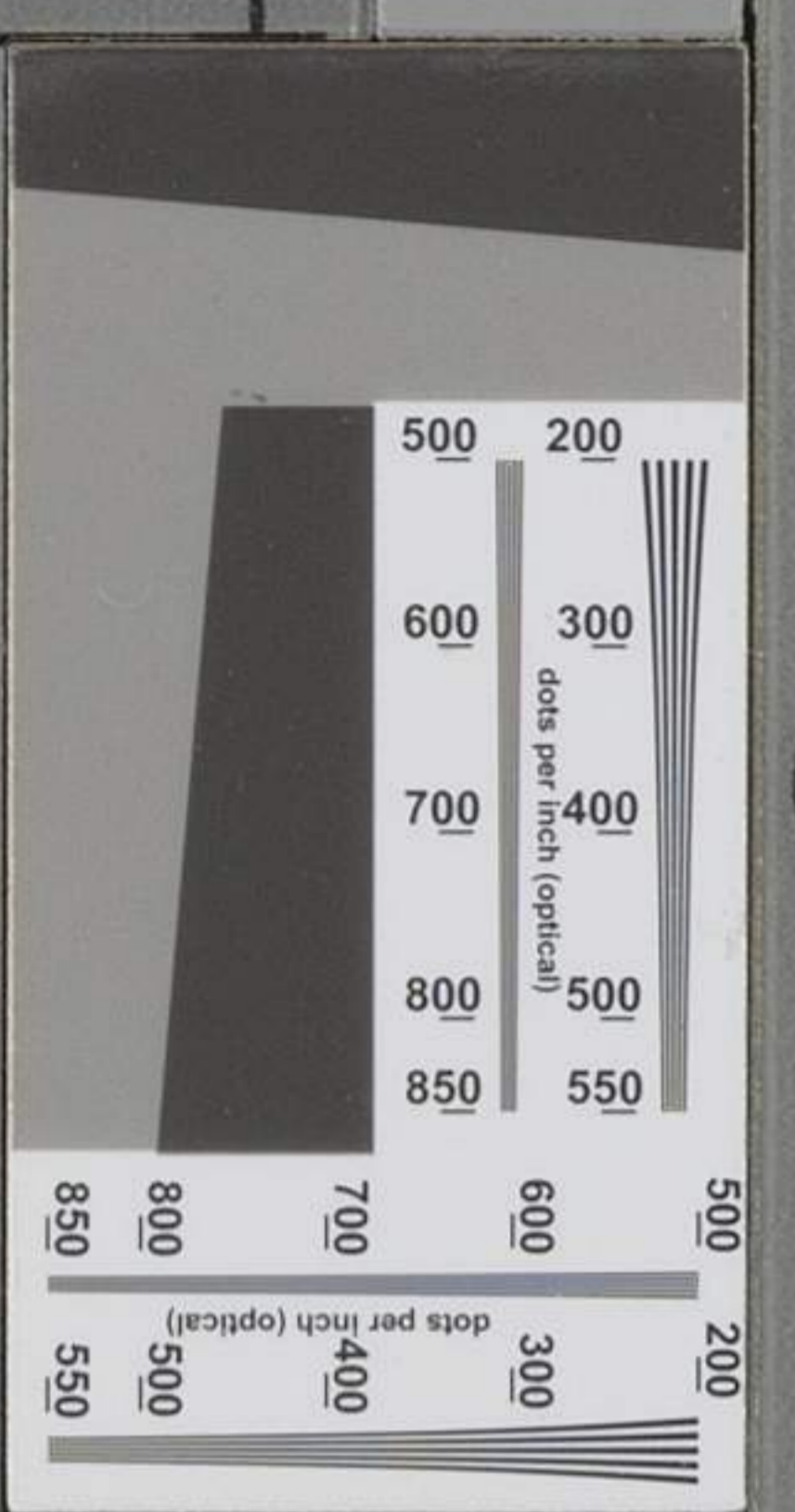
933 MASS. ST. *Wells* LAWRENCE, KANS.

inches



centimeters

	1	2	3	4	5	6	7	8	9	10	11	12	13	14	15
L*	38.76	65.15	49.61	43.54	55.52	70.42	63.13	40.08	51.75	95.34	92.09	86.92	82.37	72.17	62.32
a*	13.81	19.21	-4.20	-12.89	8.78	-32.39	35.43	10.25	47.36	-0.90	-0.92	-1.12	-1.12	-1.05	-1.10
b*	14.69	17.92	-21.33	22.66	-24.31	-0.48	57.84	-44.77	16.93	1.90	1.46	0.97	0.56	-0.04	-0.01



16	49.61	38.89	28.60	17.97	9.50	4.33	30.32	72.50	72.40	29.51	55.60	43.48	82.02	52.85	50.86
17	-1.29	-0.23	1.09	0.04	0.45	0.32	22.13	22.92	13.31	13.42	-38.46	50.74	3.28	49.90	-27.78
18	-0.10	-0.48	0.07	0.09	0.25	-0.47	-19.02	36.08	67.85	-47.69	32.19	29.13	78.75	-12.86	-27.68
19															
20															
21															
22															
23															
24															
25															
26															
27															
28															
29															
30															

D50 Illuminant, 2 degree observer

Density →

0.05 0.09 0.16 0.22 0.36 0.52

*Dor Williams*

All values are batch averages

M000936

L\*

a\*

b\*

Carrie M. Watson, Librarian KU,  
 for whom Watson Library  
 was named.

III / B / 5 / c / no. 35

Property of  
 University of Kansas  
 Archives

