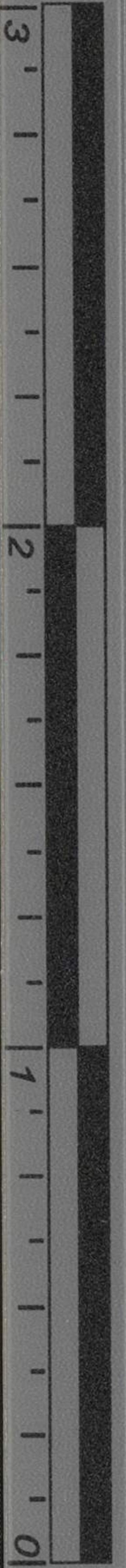




LAWRENCE KANS.

F. D. Mettner

inches



centimeters

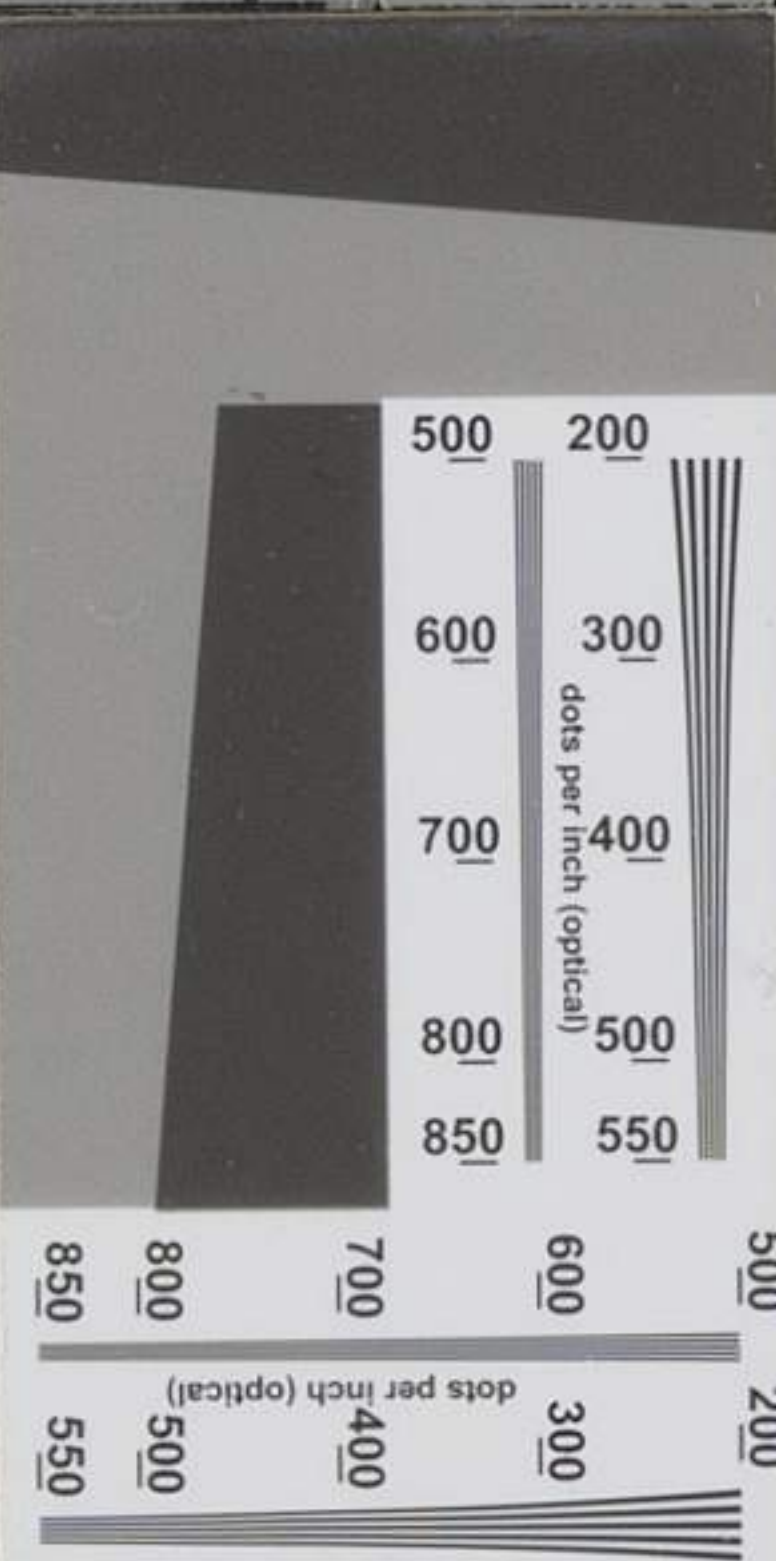


L*	38.76	65.15	49.61	43.54	55.52	70.42	63.13	40.08	51.75	95.34	92.09	86.92	82.37	72.17	62.32
a*	13.81	19.21	-4.20	-12.89	8.78	-32.39	35.43	10.25	47.36	-0.90	-0.92	-1.12	-1.12	-1.05	-1.10
b*	14.69	17.92	-21.33	22.66	-24.31	-0.48	57.84	-44.77	16.93	1.90	1.46	0.97	0.56	-0.04	-0.01

D50 Illuminant, 2 degree observer

Density

0.05 0.09 0.16 0.22 0.36 0.52



Dor Williams

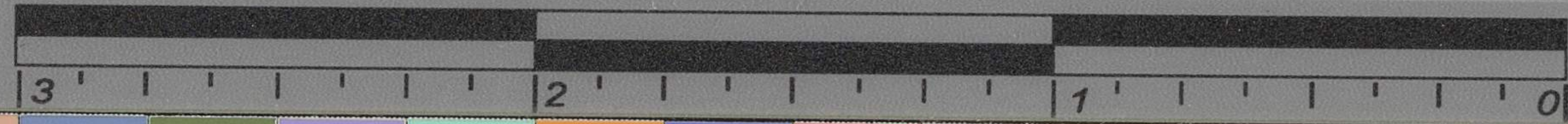
L*	49.61	38.89	28.60	17.97	9.50	4.33	30.32	72.50	72.10	29.51	55.60	43.48	82.02	52.85	50.86
a*	-1.29	-0.23	-1.09	0.04	0.45	0.32	22.13	-22.92	19.51	13.42	-38.45	50.74	3.28	49.90	-27.78
b*	-0.10	-0.48	0.07	0.09	0.25	-0.47	-19.02	56.08	67.85	-47.69	32.19	29.13	78.75	-12.86	-27.68

All values are batch averages

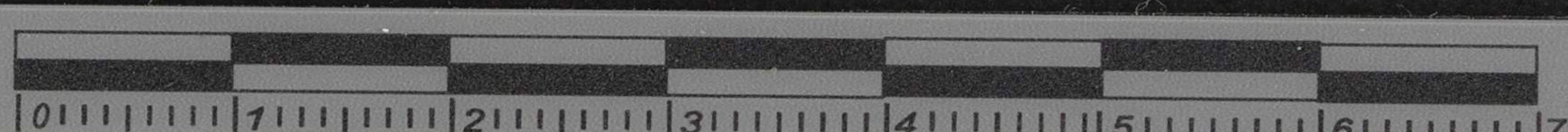
M000936

F. F. Meddmer
The Riverside Studio.
Lawrence, Kans.

inches



centimeters

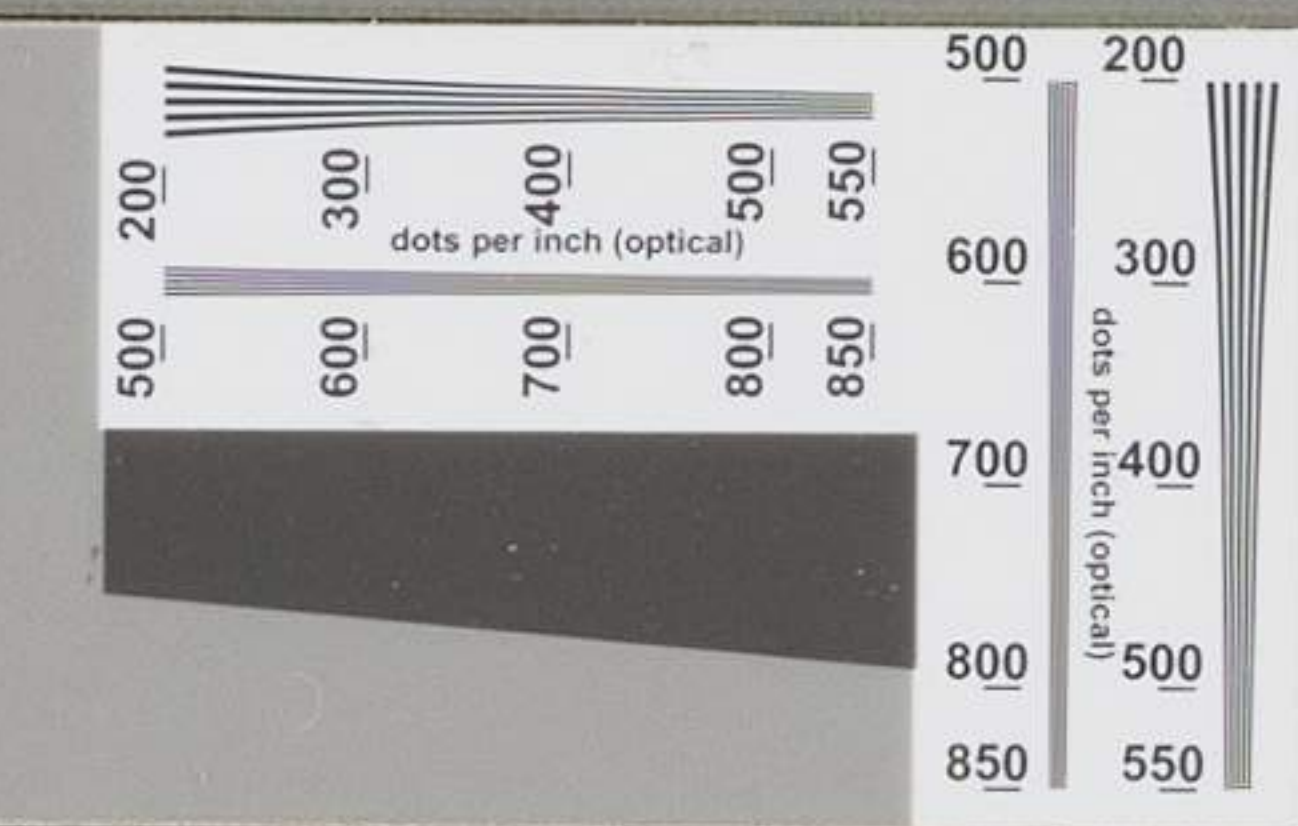


	1	2	3	4	5	6	7	8	9	10	11	12	13	14	15
L*	38.76	65.15	49.61	43.54	55.52	70.42	63.13	40.08	51.75	95.34	92.09	86.92	82.37	72.17	62.32
a*	13.81	19.21	-4.20	-12.89	8.78	-32.39	35.43	10.25	47.36	-0.90	-0.92	-1.12	-1.12	-1.05	-1.10
b*	14.69	17.92	-21.33	22.66	-24.31	-0.48	57.84	-44.77	16.93	1.90	1.46	0.97	0.56	-0.04	-0.01

D50 Illuminant, 2 degree observer

Density → 0.05 0.09 0.16 0.22 0.36 0.52

Dox Williams



	16	17	18	19	20	21	22	23	24	25	26	27	28	29	30
L*	49.61	38.89	28.60	17.97	9.50	4.33	30.32	72.50	72.10	29.51	55.60	43.48	82.02	52.85	50.86
a*	-1.29	-0.23	-1.09	0.04	0.45	0.32	22.13	-22.92	19.51	13.42	-38.46	50.74	3.28	49.90	-27.78
b*	-0.10	-0.48	0.07	0.09	0.25	-0.47	-19.02	56.08	67.85	-47.69	32.19	29.13	78.75	-12.86	-27.68

0.75 0.98 1.24 1.64 1.96 2.38 All values are batch averages

M000936